

Recombinant Human NDEL1 protein ab183232

1 Image

Description

Product name	Recombinant Human NDEL1 protein
Purity	> 80 % SDS-PAGE.
Expression system	Escherichia coli
Accession	<u>Q9GZM8</u>
Protein length	Full length protein
Animal free	No
Nature	Recombinant
Species	Human
Sequence	MGSSHHHHHH SSGLVPRGSH MGSMGDGEDIP DFSSLKEETA YWKELSLKYK QSFQEARDEL VEFQEGSREL EAELEAQLVQ AEQRNRDLQA DNQRLKYEVE ALKEKLEHQY AQSYPQVSVL EDDLSQTRAI KEQLHKYVRE LEQANDDLER AKRATVSLE DFEQRLNQAI ERNAFLESEL DEKESLLVSV QRLKDEARDL RQELAVRERQ QEVTRKSAPS SPTLDCEKMD SAVQASLSLP ATPVGKG TEN TFPSPKAIPN GFGTSPLTPS ARISALNVG DLLRKVGALE SKLAACRNFA KDQASRYSI SGNVNCGV LN GNGTKFSRSG HTSFFDKGQE KVIFPTLFMG Q
Predicted molecular weight	39 kDa including tags
Amino acids	1 to 328
Tags	His tag N-Terminus
Additional sequence information	NP_001020750

Specifications

Our **Abpromise guarantee** covers the use of **ab183232** in the following tested applications.

The application notes include recommended starting dilutions; optimal dilutions/concentrations should be determined by the end user.

Applications	SDS-PAGE
	Mass Spectrometry

Mass spectrometry	MALDI-TOF
Form	Liquid
Additional notes	This product was previously labelled as Nudel

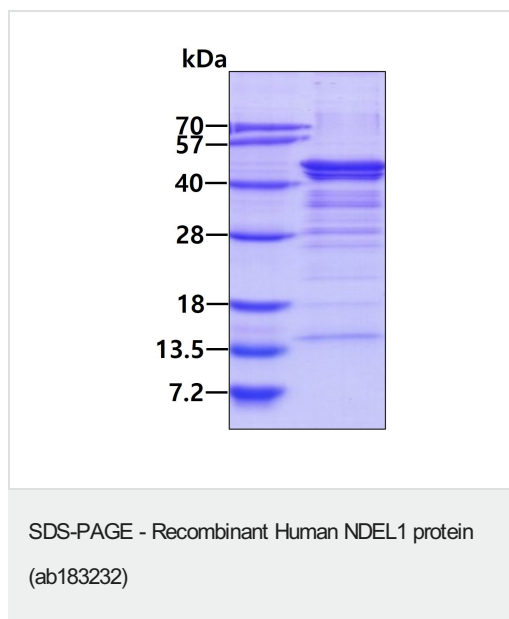
Preparation and Storage

Stability and Storage	<p>Shipped at 4°C. Store at +4°C short term (1-2 weeks). Upon delivery aliquot. Store at -20°C or -80°C. Avoid freeze / thaw cycle.</p> <p>pH: 8.00</p> <p>Constituents: 0.32% Tris HCl, 0.88% Sodium chloride, 10% Glycerol (glycerin, glycerine), 0.02% DTT</p>
------------------------------	---

General Info

Function	<p>Required for organization of the cellular microtubule array and microtubule anchoring at the centrosome. May regulate microtubule organization at least in part by targeting the microtubule severing protein KATNA1 to the centrosome. Also positively regulates the activity of the minus-end directed microtubule motor protein dynein. May enhance dynein-mediated microtubule sliding by targeting dynein to the microtubule plus ends. Required for several dynein- and microtubule-dependent processes such as the maintenance of Golgi integrity, the centripetal motion of secretory vesicles and the coupling of the nucleus and centrosome. Also required during brain development for the migration of newly formed neurons from the ventricular/subventricular zone toward the cortical plate. Plays a role, together with DISC1, in the regulation of neurite outgrowth. Required for mitosis in some cell types but appears to be dispensable for mitosis in cortical neuronal progenitors, which instead requires NDE1. Facilitates the polymerization of neurofilaments from the individual subunits NEFH and NEFL.</p>
Tissue specificity	Expressed in brain, heart, kidney, liver, lung, pancreas, placenta and skeletal muscle.
Sequence similarities	Belongs to the nudE family.
Developmental stage	Expression peaks in mitosis.
Post-translational modifications	<p>Phosphorylated in mitosis. Can be phosphorylated by CDK1, CDK5 and MAPK1.</p> <p>Phosphorylation by CDK5 promotes interaction with KATNA1 and YWHAE.</p>
Cellular localization	<p>Cytoplasm > cytoskeleton. Cytoplasm > cytoskeleton > centrosome. Chromosome > centromere > kinetochore. Cytoplasm > cytoskeleton > spindle. Localizes to the cell body of the motor neurons and colocalizes with assembled neurofilaments within axonal processes. Localizes to the microtubules of the manchette in elongated spermatids. Colocalizes with DISC1 in the perinuclear region, including the centrosome (By similarity). Localizes to the interphase centrosome and the mitotic spindle. Localizes to the kinetochore in a CENPF-dependent manner.</p>

Images



15% SDS-PAGE analysis of ab183232 (3µg)

Please note: All products are "FOR RESEARCH USE ONLY. NOT FOR USE IN DIAGNOSTIC PROCEDURES"

Our Abpromise to you: Quality guaranteed and expert technical support

- Replacement or refund for products not performing as stated on the datasheet
- Valid for 12 months from date of delivery
- Response to your inquiry within 24 hours
- We provide support in Chinese, English, French, German, Japanese and Spanish
- Extensive multi-media technical resources to help you
- We investigate all quality concerns to ensure our products perform to the highest standards

If the product does not perform as described on this datasheet, we will offer a refund or replacement. For full details of the Abpromise, please visit <https://www.abcam.com/abpromise> or contact our technical team.

Terms and conditions

- Guarantee only valid for products bought direct from Abcam or one of our authorized distributors