

Recombinant Human NELFe protein ab104637

1 Image

Description

Product name	Recombinant Human NELFe protein
Purity	> 85 % SDS-PAGE. ab104637 is purified using conventional chromatography techniques.
Expression system	Escherichia coli
Accession	<b><u>P18615</u></b>
Protein length	Full length protein
Animal free	No
Nature	Recombinant
Species	Human
Sequence	<b>MGSSHHHHHHSSGLVPRGSH</b> MLVIPPLSEEEEEALQKK FNKLKKKKKALL ALKKQSSSSTTSQGGVKRSLSEQPVMDTATATEQAKQLV KSGAISAIAE TKNSGFKRSRTLEGKLDPEKGPVPTFQPFQRSISADDD LQESSRRPQRK SLYESFVSSSDRLRELGPDGEEAEGPGAGDGPPRSFDW GYEERSGAHSSA SPPRSRSRDRSHERNRDRDRERDRDRDRDRDRERD RDRDRDRDRDRER DRDRERDRDRDREGPFRRSDSFERRAPRKGNTLYVYG EDMTPTLLRGAF SPFGNIIDLSDPPRNCAFVTYEKMESADQAVAEINGTQV ESVQLKVNIA RKQPM LDAATGKSVWGSLAVQNSPKGCHRDKRTQMYS DDVYKENLVDGF
Predicted molecular weight	45 kDa including tags
Amino acids	1 to 380
Tags	His tag N-Terminus

Specifications

Our **Abpromise guarantee** covers the use of **ab104637** in the following tested applications.

The application notes include recommended starting dilutions; optimal dilutions/concentrations should be determined by the end user.

<b>Applications</b>	SDS-PAGE Mass Spectrometry
<b>Mass spectrometry</b>	MALDI-TOF
<b>Form</b>	Liquid

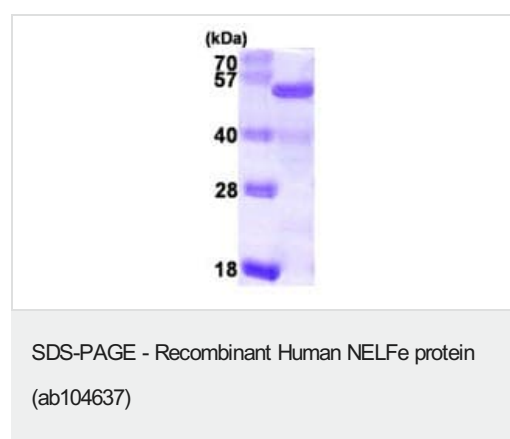
## Preparation and Storage

<b>Stability and Storage</b>	Shipped at 4°C. Upon delivery aliquot and store at -20°C or -80°C. Avoid repeated freeze / thaw cycles. pH: 8.00 Constituents: 0.0308% DTT, 0.316% Tris HCl, 10% Glycerol (glycerin, glycerine), 0.58% Sodium chloride
------------------------------	--

## General Info

<b>Function</b>	Essential component of the NELF complex, a complex that negatively regulates the elongation of transcription by RNA polymerase II. The NELF complex, which acts via an association with the DSIF complex and causes transcriptional pausing, is counteracted by the P-TEFb kinase complex.
<b>Tissue specificity</b>	Widely expressed. Expressed in heart, brain, lung, placenta, liver, skeletal muscle, kidney and pancreas.
<b>Sequence similarities</b>	Belongs to the RRM NELF-E family. Contains 1 RRM (RNA recognition motif) domain.
<b>Domain</b>	The RRM domain interacts with RNA, and is essential for NELF complex function. It is however not required for the NELF complex formation.
<b>Post-translational modifications</b>	Sumoylated.
<b>Cellular localization</b>	Nucleus.

## Images



15% SDS-PAGE analysis of 3µg ab104637.

Note: Real molecular weight on SDS-PAGE is shifted up compared to predicted molecular weight.

**Please note:** All products are "FOR RESEARCH USE ONLY. NOT FOR USE IN DIAGNOSTIC PROCEDURES"

### **Our Abpromise to you: Quality guaranteed and expert technical support**

---

- Replacement or refund for products not performing as stated on the datasheet
- Valid for 12 months from date of delivery
- Response to your inquiry within 24 hours
  
- We provide support in Chinese, English, French, German, Japanese and Spanish
- Extensive multi-media technical resources to help you
- We investigate all quality concerns to ensure our products perform to the highest standards

If the product does not perform as described on this datasheet, we will offer a refund or replacement. For full details of the Abpromise, please visit <https://www.abcam.com/abpromise> or contact our technical team.

### **Terms and conditions**

---

- Guarantee only valid for products bought direct from Abcam or one of our authorized distributors