

Recombinant Human Neuropilin 1 protein ab132179

1 Image

Description

Product name	Recombinant Human Neuropilin 1 protein
Expression system	Wheat germ
Accession	<u>O14786-2</u>
Protein length	Full length protein
Animal free	No
Nature	Recombinant
Species	Human

Sequence

RNDKCGDTIKIESPGYLTSPGYPHSYHPSEKCEWLIQAPD
PYQRIMINFN
PHFDLED RDCKYDYVEVFDGENENGHFRGKFCGKIAPPP
VVSSGPFLFIK
FVSDYETHGAGFSIRYEIFKRGPECSQNYTTPSGVIKSPGF
PEKYPNSLE
CTYVFALKMSEIILEFESFDLEPDSNPPGGMFCRYDRLEIR
DGFPDVGP
HIGRYCGQKTPGRIRSSSGILSMVFYTDSAIAKEGFSANYS
VLQSSVSED
FKCMEALGMESGEIHSDQITASSQYSTNWSAERSRLNYPE
NGWTPGEDSY
REWIQVDLGLLRFTAVGTQGAISKETKKKYYVKTYKIDVS
SNGEDWITI
KEGNKPVL FQGNTNPTDVVVAVFPKPLITRFVRIKPATWE
TGISMRFEVY
GCKITDYPCSGMLGMVSGLISDSQITSSNQGDRNWMPENI
RLVTSRSGWA
LPPAPHSYINEWLQIDLGEEKIVRGIIIQGGKHRENKVFMRK
FKIGYSNN
GSDWKMIMDDSKRKAJSFEGNNNYDTPELRTFPALSTRFI
RIYPERATHG
GLGLRMELLGCEVEAPTAGPTTPNGNLVDECDDDQANC
HSGTGDDDFQLTG GTTVLATEKPTVIDSTIQSGIK

Predicted molecular weight	94 kDa including tags
Amino acids	23 to 644
Tags	GST tag N-Terminus

Specifications

Our **Abpromise guarantee** covers the use of **ab132179** in the following tested applications.

The application notes include recommended starting dilutions; optimal dilutions/concentrations should be determined by the end user.

Applications	ELISA
	Western blot
	SDS-PAGE
Form	Liquid

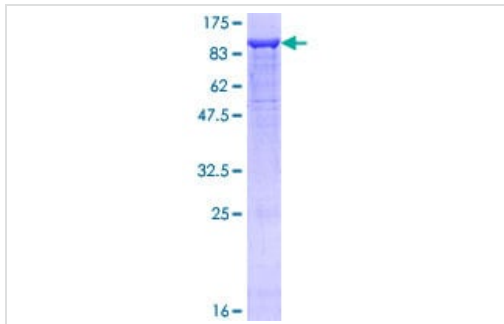
Preparation and Storage

Stability and Storage	Shipped on dry ice. Upon delivery aliquot and store at -80°C. Avoid freeze / thaw cycles. pH: 8.00 Constituents: 0.31% Glutathione, 0.79% Tris HCl
------------------------------	--

General Info

Function	<p>The membrane-bound isoform 1 is a receptor involved in the development of the cardiovascular system, in angiogenesis, in the formation of certain neuronal circuits and in organogenesis outside the nervous system. It mediates the chemorepulsant activity of semaphorins. It binds to semaphorin 3A, The PLGF-2 isoform of PGF, The VEGF-165 isoform of VEGF and VEGF-B. Coexpression with KDR results in increased VEGF-165 binding to KDR as well as increased chemotaxis. It may regulate VEGF-induced angiogenesis.</p> <p>The soluble isoform 2 binds VEGF-165 and appears to inhibit its binding to cells. It may also induce apoptosis by sequestering VEGF-165. May bind as well various members of the semaphorin family. Its expression has an averse effect on blood vessel number and integrity.</p>
Tissue specificity	<p>The expression of isoforms 1 and 2 does not seem to overlap. Isoform 1 is expressed by the blood vessels of different tissues. In the developing embryo it is found predominantly in the nervous system. In adult tissues, it is highly expressed in heart and placenta; moderately in lung, liver, skeletal muscle, kidney and pancreas; and low in adult brain. Isoform 2 is found in liver hepatocytes, kidney distal and proximal tubules.</p>
Sequence similarities	<p>Belongs to the neuropilin family.</p> <p>Contains 2 CUB domains.</p> <p>Contains 2 F5/8 type C domains.</p> <p>Contains 1 MAM domain.</p>
Cellular localization	Secreted and Cell membrane.

Images



12.5% SDS-PAGE analysis of ab132179 stained with Coomassie Blue.

SDS-PAGE - Recombinant Human Neuropilin 1
protein (ab132179)

Please note: All products are "FOR RESEARCH USE ONLY. NOT FOR USE IN DIAGNOSTIC PROCEDURES"

Our Abpromise to you: Quality guaranteed and expert technical support

- Replacement or refund for products not performing as stated on the datasheet
- Valid for 12 months from date of delivery
- Response to your inquiry within 24 hours
- We provide support in Chinese, English, French, German, Japanese and Spanish
- Extensive multi-media technical resources to help you
- We investigate all quality concerns to ensure our products perform to the highest standards

If the product does not perform as described on this datasheet, we will offer a refund or replacement. For full details of the Abpromise, please visit <https://www.abcam.com/abpromise> or contact our technical team.

Terms and conditions

- Guarantee only valid for products bought direct from Abcam or one of our authorized distributors