

Product datasheet

Recombinant Human Neurotrypsin protein (Tagged)  
ab236162

1 Image

Description	
Product name	Recombinant Human Neurotrypsin protein (Tagged)
Purity	> 90 % SDS-PAGE.
Expression system	Escherichia coli
Accession	<u>P56730</u>
Protein length	Protein fragment
Animal free	No
Nature	Recombinant
Species	Human
Sequence	IIGGKNSLRGGWPWQVSLRLKSSHGDGRLLCGATLLSSC WVLTAAHCFKR YGNSTRSYAVRVGDYHTLVPEEFEEEEIGVQQVIHREYRPD RSDYDIALV RLQGPEEQCARFSSHVLPACLPLWRERPQKTASNCYTG WGDTEGRAYSRT LQQAAPLLPKRFCEERYKGRFTGRMLCAGNLHEHKRVD SCQGDSGGPLM CERPGESWVVYGVTSWGYGCGVKDSPGVYTKVSAFVP WIKSVTK
Predicted molecular weight	43 kDa including tags
Amino acids	631 to 874
Tags	His tag N-Terminus
Additional sequence information	Peptidase S1 domain. N-terminal 6xHis-SUMO-tag.

Specifications	
Our <b>Abpromise guarantee</b> covers the use of <b>ab236162</b> in the following tested applications.	
The application notes include recommended starting dilutions; optimal dilutions/concentrations should be determined by the end user.	
Applications	SDS-PAGE
Form	Liquid

## Preparation and Storage

### Stability and Storage

Shipped at 4°C. Store at -20°C or -80°C. Avoid freeze / thaw cycle.

pH: 7.2

Constituents: Tris buffer, 50% Glycerol (glycerin, glycerine)

### General Info

#### Function

Plays a role in neuronal plasticity and the proteolytic action may subserve structural reorganizations associated with learning and memory operations.

#### Tissue specificity

Brain and Leydig cells of the testis.

#### Involvement in disease

Defects in PRSS12 are the cause of mental retardation autosomal recessive type 1 (MRT1) [MIM:249500]. Mental retardation is a mental disorder characterized by significantly sub-average general intellectual functioning associated with impairments in adaptive behavior and manifested during the developmental period. Non-syndromic mental retardation patients do not manifest other clinical signs.

#### Sequence similarities

Belongs to the peptidase S1 family.

Contains 1 kringle domain.

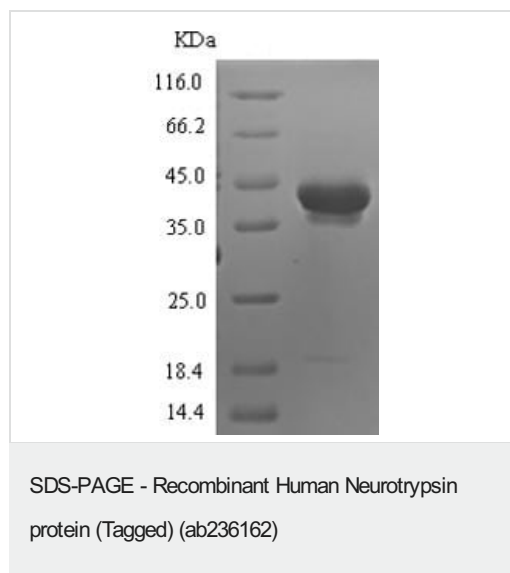
Contains 1 peptidase S1 domain.

Contains 4 SRCR domains.

#### Cellular localization

Secreted.

## Images



(Tris-Glycine gel) Discontinuous SDS-PAGE (reduced) analysis with 5% enrichment gel and 15% separation gel analysis of ab236162.

**Please note:** All products are "FOR RESEARCH USE ONLY. NOT FOR USE IN DIAGNOSTIC PROCEDURES"

## Our Abpromise to you: Quality guaranteed and expert technical support

- Replacement or refund for products not performing as stated on the datasheet
- Valid for 12 months from date of delivery

- Response to your inquiry within 24 hours
- We provide support in Chinese, English, French, German, Japanese and Spanish
- Extensive multi-media technical resources to help you
- We investigate all quality concerns to ensure our products perform to the highest standards

If the product does not perform as described on this datasheet, we will offer a refund or replacement. For full details of the Abpromise, please visit <https://www.abcam.com/abpromise> or contact our technical team.

#### **Terms and conditions**

---

- Guarantee only valid for products bought direct from Abcam or one of our authorized distributors