

Product datasheet

Recombinant Human NKIRAS2 protein ab124599

1 Image

Description

Product name	Recombinant Human NKIRAS2 protein
Purity	> 90 % SDS-PAGE. ab124599 is purified by using conventional chromatography techniques.
Expression system	Escherichia coli
Accession	<u>Q9NYR9</u>
Protein length	Full length protein
Animal free	No
Nature	Recombinant
Species	Human
Sequence	MGSSHHHHHH SSGLVPRGSH MGSHEMGKSCK VVVCGQASVG KTSILEQLLY GNHVVGSEMI ETQEDIYGS IETDRGVREQ VRFYDTRGLR DGAELPRHCF SCTDGWLVY STDSRESFQR VELLKKEIDK SKDKKEVTIV VLGKCDLQE QRRVDPDVAQ HWAKSEKVKL WEVSVADRRS LLEPFVYLAS KMTQPQSKSA FPLSRKNKGS GSLDG
Predicted molecular weight	24 kDa including tags
Amino acids	1 to 191
Tags	His tag N-Terminus

Specifications

Our **Abpromise guarantee** covers the use of **ab124599** in the following tested applications.

The application notes include recommended starting dilutions; optimal dilutions/concentrations should be determined by the end user.

Applications	SDS-PAGE Mass Spectrometry
Mass spectrometry	MALDI-TOF
Form	Liquid

Preparation and Storage

Stability and Storage

Shipped at 4°C. Store at +4°C short term (1-2 weeks). Upon delivery aliquot. Store at -20°C or -80°C. Avoid freeze / thaw cycle.

pH: 8.00

Constituents: 0.02% DTT, 0.32% Tris HCl, 10% Glycerol (glycerin, glycerine), 0.58% Sodium chloride

General Info

Function

Atypical Ras-like protein that acts as a potent regulator of NF-kappa-B activity by preventing the degradation of NF-kappa-B inhibitor beta (NFKBIB) by most signals, explaining why NFKBIB is more resistant to degradation. May act by blocking phosphorylation of NFKBIB and nuclear localization of p65/RELA NF-kappa-B subunit. It is unclear whether it acts as a GTPase. Both GTP- and GDP-bound forms block phosphorylation of NFKBIB.

Tissue specificity

Widely expressed.

Sequence similarities

Belongs to the small GTPase superfamily. Ras family. KappaB-Ras subfamily.

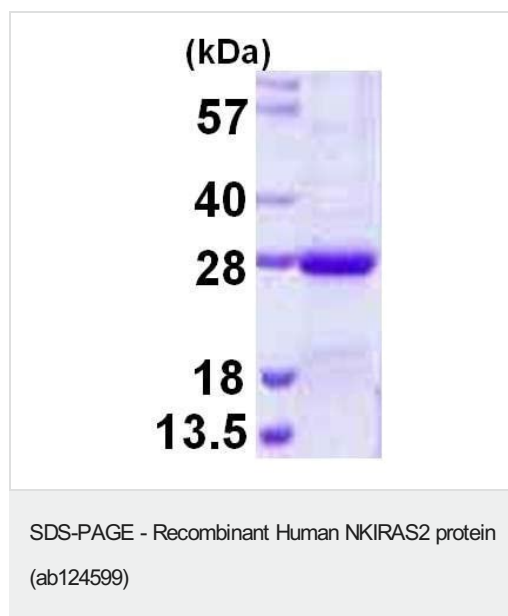
Domain

In contrast to other members of the Ras family, the members of the KappaB-Ras subfamily do not contain the conserved Gly and Gln residues in positions 13 and 65, which are replaced by Ala and Leu residues, respectively, and are therefore similar to the constitutively active forms of oncogenic forms of Ras. This suggests that members of this family are clearly different from other small GTPases proteins.

Cellular localization

Cytoplasm.

Images



15% SDS-PAGE showing ab124599 (3µg).

Please note: All products are "FOR RESEARCH USE ONLY. NOT FOR USE IN DIAGNOSTIC PROCEDURES"

Our Abpromise to you: Quality guaranteed and expert technical support

- Replacement or refund for products not performing as stated on the datasheet
- Valid for 12 months from date of delivery
- Response to your inquiry within 24 hours

- We provide support in Chinese, English, French, German, Japanese and Spanish
- Extensive multi-media technical resources to help you
- We investigate all quality concerns to ensure our products perform to the highest standards

If the product does not perform as described on this datasheet, we will offer a refund or replacement. For full details of the Abpromise, please visit <https://www.abcam.com/abpromise> or contact our technical team.

Terms and conditions

- Guarantee only valid for products bought direct from Abcam or one of our authorized distributors