

Product datasheet

Recombinant human NKp30 protein (Fc Chimera Active) ab184896

[2 Images](#)

Description

Product name	Recombinant human NKp30 protein (Fc Chimera Active)
Biological activity	Measured by its binding ability in a functional ELISA. Immobilized Human B7-H6, His Tag at 10 µg/mL (100 µL/well) can bind ab184896 with a linear range of 2-78 ng/mL.
Purity	> 95 % SDS-PAGE.
Endotoxin level	< 1.000 Eu/µg
Expression system	HEK 293 cells
Accession	<u>O14931</u>
Protein length	Protein fragment
Animal free	No
Nature	Recombinant
Species	Human
Sequence	LWVSQPPEIRTLLEGSSAFLPCSFNASQGRLAIGSVTWFRD EVVPGKEVRN GTPEFRGRLA PLASSRFLHDHQAEHLHIRDVRGHDASIYVCRVEVLGLG VGTGNGTRLVVEKEHPQLG
Predicted molecular weight	40 kDa including tags
Amino acids	19 to 135
Tags	Fc tag C-Terminus
Additional sequence information	Extracellular domain of NCR3 fused with Fc fragment of Human IgG1 at the C-terminus.

Specifications

Our **Abpromise guarantee** covers the use of **ab184896** in the following tested applications.

The application notes include recommended starting dilutions; optimal dilutions/concentrations should be determined by the end user.

Applications	SDS-PAGE ELISA
Form	Lyophilized

Additional notes

This product is stable after storage at:

-20 °C to -70 °C for 12 months in lyophilized state;

-70 °C for 3 months under sterile conditions after reconstitution.

Preparation and Storage

Stability and Storage

Shipped at 4 °C. Upon delivery aliquot. Store at -20 °C or -80 °C. Avoid freeze / thaw cycle.

Reconstitute for long term storage.

pH: 7.4

Constituents: 0.75% Glycine, 0.605% Tris, 5% Trehalose

This product is an active protein and may elicit a biological response in vivo, handle with caution.

Reconstitution

Reconstitute with sterile deionized water to a concentration of 400 µg/ml.

General Info

Function

Cytotoxicity-activating receptor that contributes to the increased efficiency of activated natural killer (NK) cells to mediate tumor cell lysis. Engagement of NCR3 by BAG6 also promotes dendritic cell (DC) maturation, both through killing those DCs that did not properly acquire a mature phenotype, and inducing NK cells to release TNFA and IFNG, which promotes DC maturation.

Tissue specificity

Selectively expressed by all resting and activated NK cells and weakly expressed in spleen.

Sequence similarities

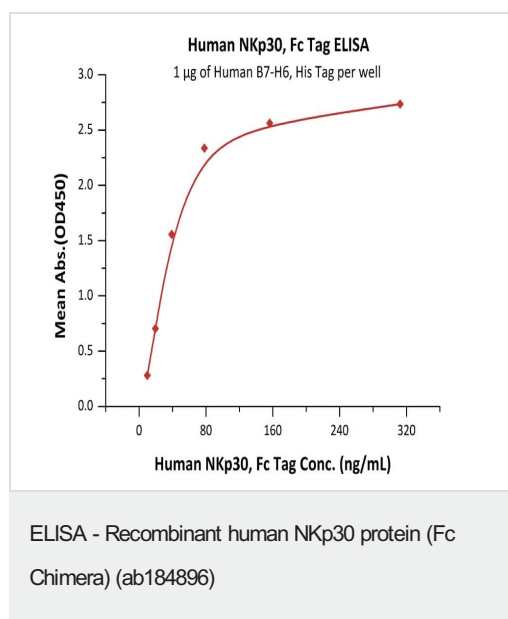
Belongs to the natural cytotoxicity receptor (NCR) family.

Contains 1 Ig-like (immunoglobulin-like) domain.

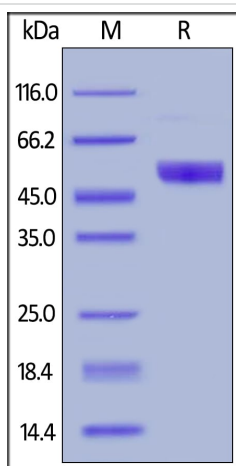
Cellular localization

Cell membrane.

Images



Immobilized Human B7-H6, His Tag at 10 µg/mL (100 µL/well) can bind ab184896 with a linear range of 2-78 ng/mL.



SDS-PAGE of reduced ab184896 stained overnight with Coomassie Blue. The protein migrates as 50-58 kDa due to glycosylation.

SDS-PAGE - Recombinant human NKp30 protein
(Fc Chimera) (ab184896)

Please note: All products are "FOR RESEARCH USE ONLY. NOT FOR USE IN DIAGNOSTIC PROCEDURES"

Our Abpromise to you: Quality guaranteed and expert technical support

- Replacement or refund for products not performing as stated on the datasheet
- Valid for 12 months from date of delivery
- Response to your inquiry within 24 hours
- We provide support in Chinese, English, French, German, Japanese and Spanish
- Extensive multi-media technical resources to help you
- We investigate all quality concerns to ensure our products perform to the highest standards

If the product does not perform as described on this datasheet, we will offer a refund or replacement. For full details of the Abpromise, please visit <https://www.abcam.com/abpromise> or contact our technical team.

Terms and conditions

- Guarantee only valid for products bought direct from Abcam or one of our authorized distributors