

Product datasheet

Recombinant human NM23A protein (Active) ab211310

[1 Image](#)

Description

Product name	Recombinant human NM23A protein (Active)
Biological activity	Specific activity is > 1,200 units/mg, and is defined as the amount of enzyme that convert 1.0 umole each of ATP and TDP to ADP and TTP per minute at pH 7.5 at 25°C in a couple system with PK/LDH.
Purity	> 90 % SDS-PAGE. ab211310 was purified using conventional chromatography techniques.
Endotoxin level	< 1.000 Eu/μg
Expression system	Escherichia coli
Accession	<u>P15531</u>
Protein length	Full length protein
Animal free	No
Nature	Recombinant
Species	Human
Sequence	MANCERTFIA IKPDGVQRGL VGEIIKRFEQ KGFRLVGLKF MQASEDLLKE HYVDLKDRPF FAGLVKYMHS GPVVAMVWEG LNVVKTGRVM LGETNPADSK PGTIRGDFCI QVGRNIIHGS DSVESAEKEI GLWFHPEELV DYTSCAQNW IYE
Predicted molecular weight	17 kDa
Amino acids	1 to 152
Additional sequence information	NP_000260.

Specifications

Our **Abpromise guarantee** covers the use of **ab211310** in the following tested applications.

The application notes include recommended starting dilutions; optimal dilutions/concentrations should be determined by the end user.

Applications	SDS-PAGE Functional Studies Mass Spectrometry
Mass spectrometry	MALDI-TOF

Form Liquid

Preparation and Storage

Stability and Storage

Shipped at 4°C. Store at +4°C short term (1-2 weeks). Upon delivery aliquot. Store at -20°C or -80°C. Avoid freeze / thaw cycle.

pH: 7.50

Constituents: 0.32% Tris HCl, 0.02% DTT, 10% Glycerol (glycerin, glycerine)

This product is an active protein and may elicit a biological response in vivo, handle with caution.

General Info

Function

Major role in the synthesis of nucleoside triphosphates other than ATP. Possesses nucleoside-diphosphate kinase, serine/threonine-specific protein kinase, geranyl and farnesyl pyrophosphate kinase, histidine protein kinase and 3'-5' exonuclease activities. Involved in cell proliferation, differentiation and development, signal transduction, G protein-coupled receptor endocytosis, and gene expression. Required for neural development including neural patterning and cell fate determination.

Tissue specificity

Isoform 1 is expressed in heart, brain, placenta, lung, liver, skeletal muscle, pancreas, spleen and thymus. Expressed in lung carcinoma cell lines but not in normal lung tissues. Isoform 2 is ubiquitously expressed and its expression is also related to tumor differentiation. Isoform 3 is ubiquitously expressed.

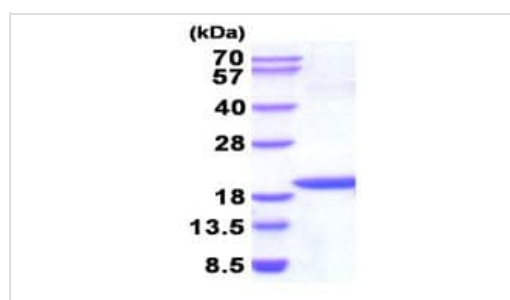
Sequence similarities

Belongs to the NDK family.

Cellular localization

Cytoplasm. Nucleus. Cell-cycle dependent nuclear localization which can be induced by interaction with Epstein-barr viral proteins or by degradation of the SET complex by GzmA.

Images



SDS-PAGE - Recombinant human NM23A protein
(Active) (ab211310)

15% SDS-PAGE analysis of ab211310 (3 µg).

Please note: All products are "FOR RESEARCH USE ONLY. NOT FOR USE IN DIAGNOSTIC PROCEDURES"

Our Abpromise to you: Quality guaranteed and expert technical support

- Replacement or refund for products not performing as stated on the datasheet

- Valid for 12 months from date of delivery
- Response to your inquiry within 24 hours
- We provide support in Chinese, English, French, German, Japanese and Spanish
- Extensive multi-media technical resources to help you
- We investigate all quality concerns to ensure our products perform to the highest standards

If the product does not perform as described on this datasheet, we will offer a refund or replacement. For full details of the Abpromise, please visit <https://www.abcam.com/abpromise> or contact our technical team.

Terms and conditions

- Guarantee only valid for products bought direct from Abcam or one of our authorized distributors