

## Product datasheet

# Recombinant Human NMDAR1 protein ab158584

[1 Image](#)

### Description

---

<b>Product name</b>	Recombinant Human NMDAR1 protein
<b>Expression system</b>	Wheat germ
<b>Protein length</b>	Protein fragment
<b>Animal free</b>	No
<b>Nature</b>	Recombinant
<b>Species</b>	Human
<b>Sequence</b>	ACDPKIVNIGAVLSTRKHEQMFREAVNQANKRHGSWKIQL NATSVTHKPN AIQMALSVCEDLISSQVYAILVSHPPTPNDHFTPTVSYTA GFYRIPVLG
<b>Amino acids</b>	21 to 120
<b>Tags</b>	GST tag N-Terminus

### Specifications

---

Our **Abpromise guarantee** covers the use of **ab158584** in the following tested applications.

The application notes include recommended starting dilutions; optimal dilutions/concentrations should be determined by the end user.

<b>Applications</b>	ELISA Western blot
<b>Form</b>	Liquid

### Additional notes

### Preparation and Storage

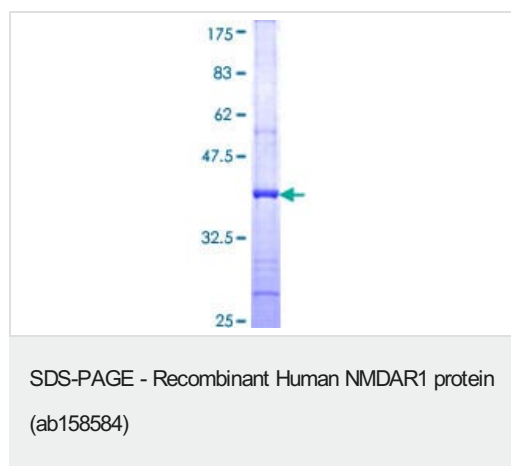
---

<b>Stability and Storage</b>	Shipped on dry ice. Upon delivery aliquot and store at -80°C. Avoid freeze / thaw cycles. pH: 8.00 Constituents: 0.31% Glutathione, 0.79% Tris HCl
------------------------------	--

### General Info

<b>Function</b>	NMDA receptor subtype of glutamate-gated ion channels with high calcium permeability and voltage-dependent sensitivity to magnesium. Mediated by glycine. This protein plays a key role in synaptic plasticity, synaptogenesis, excitotoxicity, memory acquisition and learning. It mediates neuronal functions in glutamate neurotransmission. Is involved in the cell surface targeting of NMDA receptors.
<b>Sequence similarities</b>	Belongs to the glutamate-gated ion channel (TC 1.A.10.1) family. NR1/GRIN1 subfamily.
<b>Post-translational modifications</b>	NMDA is probably regulated by C-terminal phosphorylation of an isoform of NR1 by PKC. Dephosphorylated on Ser-897 probably by protein phosphatase 2A (PPP2CB). Its phosphorylated state is influenced by the formation of the NMDAR-PPP2CB complex and the NMDAR channel activity.
<b>Cellular localization</b>	Cell membrane. Cell junction > synapse > postsynaptic cell membrane. Cell junction > synapse > postsynaptic cell membrane > postsynaptic density. Enriched in post-synaptic plasma membrane and post-synaptic densities.

## Images



ab158584 on a 12.5% SDS-PAGE stained with Coomassie Blue.

**Please note:** All products are "FOR RESEARCH USE ONLY. NOT FOR USE IN DIAGNOSTIC PROCEDURES"

## Our Abpromise to you: Quality guaranteed and expert technical support

- Replacement or refund for products not performing as stated on the datasheet
- Valid for 12 months from date of delivery
- Response to your inquiry within 24 hours
- We provide support in Chinese, English, French, German, Japanese and Spanish
- Extensive multi-media technical resources to help you
- We investigate all quality concerns to ensure our products perform to the highest standards

If the product does not perform as described on this datasheet, we will offer a refund or replacement. For full details of the Abpromise, please visit <https://www.abcam.com/abpromise> or contact our technical team.

## Terms and conditions

- Guarantee only valid for products bought direct from Abcam or one of our authorized distributors