

## Product datasheet

# Recombinant human NME4 protein ab211319

1 Image

### Description

---

<b>Product name</b>	Recombinant human NME4 protein
<b>Biological activity</b>	Specific activity is > 120 units/mg, and is defined as the amount of enzyme that convert 1.0 umole each of ATP and TDP to ADP and TTP per minute at pH 7.5 at 25°C in a couple system with PK/LDH.
<b>Purity</b>	> 90 % SDS-PAGE. ab211319 was purified using conventional chromatography.
<b>Expression system</b>	Escherichia coli
<b>Accession</b>	<b><u>O00746</u></b>
<b>Protein length</b>	Full length protein
<b>Animal free</b>	No
<b>Nature</b>	Recombinant
<b>Species</b>	Human
<b>Sequence</b>	MGSSHHHHHHSSGLVPRGSHMPSWTRERTLVAVKPDGV QRRLVGDVIQRF ERRGFTLVGMKMLQAPESVLAEHYQDLRRKPFYPALIRYM SSGPVVAMVW EGYNVVRASRAMIGHTDSAEAAPGTIRGDFSVHISRNVIHA SDSVEGAQR EIQLWFQSSSELVSWADGGQHSSIHPA
<b>Predicted molecular weight</b>	20 kDa including tags
<b>Amino acids</b>	33 to 187
<b>Tags</b>	His tag N-Terminus
<b>Additional sequence information</b>	This product is for the mature full length protein. The transit peptide is not included. NP_005000.

### Specifications

---

Our **Abpromise guarantee** covers the use of **ab211319** in the following tested applications.

The application notes include recommended starting dilutions; optimal dilutions/concentrations should be determined by the end user.

<b>Applications</b>	Mass Spectrometry
	SDS-PAGE
	Functional Studies

<b>Mass spectrometry</b>	MALDI-TOF
<b>Form</b>	Liquid

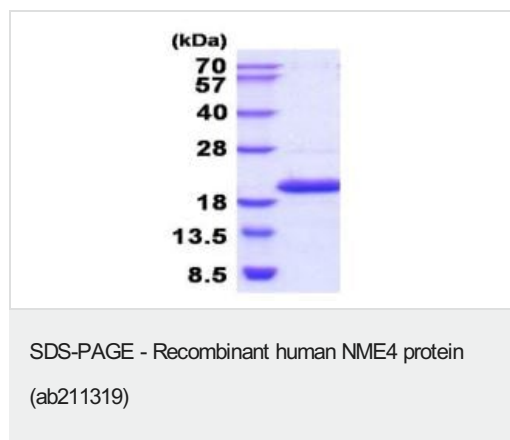
## Preparation and Storage

<b>Stability and Storage</b>	Shipped at 4°C. Store at +4°C short term (1-2 weeks). Upon delivery aliquot. Store at -20°C or -80°C. Avoid freeze / thaw cycle.  pH: 8.00 Constituents: 0.32% Tris HCl, 40% Glycerol (glycerin, glycerine), 1.17% Sodium chloride  This product is an active protein and may elicit a biological response in vivo, handle with caution.
------------------------------	---

## General Info

<b>Function</b>	Major role in the synthesis of nucleoside triphosphates other than ATP.
<b>Tissue specificity</b>	Widely distributed. Found at very high levels in prostate, heart, liver, small intestine, and skeletal muscle tissues, and in low amounts in the brain and in blood leukocytes.
<b>Sequence similarities</b>	Belongs to the NDK family.
<b>Cellular localization</b>	Mitochondrion intermembrane space.

## Images



15% SDS-PAGE analysis of ab211319 (3µg).

**Please note:** All products are "FOR RESEARCH USE ONLY. NOT FOR USE IN DIAGNOSTIC PROCEDURES"

## Our Abpromise to you: Quality guaranteed and expert technical support

- Replacement or refund for products not performing as stated on the datasheet
- Valid for 12 months from date of delivery
- Response to your inquiry within 24 hours
- We provide support in Chinese, English, French, German, Japanese and Spanish
- Extensive multi-media technical resources to help you
- We investigate all quality concerns to ensure our products perform to the highest standards

If the product does not perform as described on this datasheet, we will offer a refund or replacement. For full details of the Abpromise, please visit <https://www.abcam.com/abpromise> or contact our technical team.

### **Terms and conditions**

---

- Guarantee only valid for products bought direct from Abcam or one of our authorized distributors