

Recombinant Human Nrf2 protein ab114160

1 Image

Description	
Product name	Recombinant Human Nrf2 protein
Expression system	Wheat germ
Accession	<u>Q16236</u>
Protein length	Protein fragment
Animal free	No
Nature	Recombinant
Species	Human
Sequence	FAQLQLDEETGEFLPIQPAQHIQSETSGSANYSQVAHIPKS DALYFDDCM QLLAQTFFVDDNEVSSATFQSLVPDIPGHIESPVFIATNQ AQSPETSVA
Predicted molecular weight	37 kDa including tags
Amino acids	71 to 170

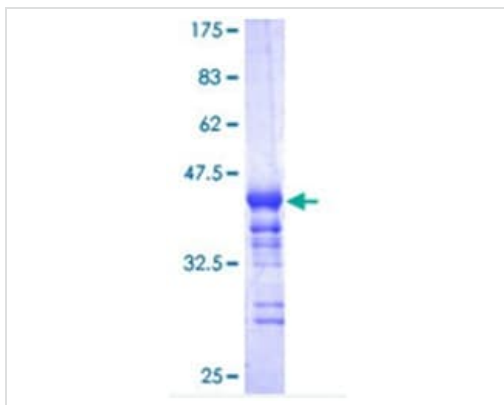
Specifications	
Our <u>Abpromise guarantee</u> covers the use of ab114160 in the following tested applications.	
The application notes include recommended starting dilutions; optimal dilutions/concentrations should be determined by the end user.	
Applications	Western blot ELISA SDS-PAGE
Form	Liquid

Preparation and Storage	
Stability and Storage	Shipped on dry ice. Upon delivery aliquot and store at -80°C. Avoid freeze / thaw cycles. pH: 8 Constituents: 0.3% Glutathione, 0.79% Tris HCl

General Info	
--------------	--

Function	Transcription activator that binds to antioxidant response (ARE) elements in the promoter regions of target genes. Important for the coordinated up-regulation of genes in response to oxidative stress. May be involved in the transcriptional activation of genes of the beta-globin cluster by mediating enhancer activity of hypersensitive site 2 of the beta-globin locus control region.
Tissue specificity	Widely expressed. Highest expression in adult muscle, kidney, lung, liver and in fetal muscle.
Sequence similarities	Belongs to the bZIP family. CNC subfamily. Contains 1 bZIP domain.
Domain	Acidic activation domain in the N-terminus, and DNA binding domain in the C-terminus.
Post-translational modifications	Phosphorylation of Ser-40 by PKC in response to oxidative stress dissociates NFE2L2 from its cytoplasmic inhibitor KEAP1, promoting its translocation into the nucleus.
Cellular localization	Cytoplasm > cytosol. Nucleus. Cytosolic under unstressed conditions, translocates into the nucleus upon induction by electrophilic agents.

Images



12.5% SDS-PAGE analysis of ab114160, stained with Coomassie Blue.

SDS-PAGE - Recombinant Human Nrf2 protein
(ab114160)

Please note: All products are "FOR RESEARCH USE ONLY. NOT FOR USE IN DIAGNOSTIC PROCEDURES"

Our Abpromise to you: Quality guaranteed and expert technical support

- Replacement or refund for products not performing as stated on the datasheet
- Valid for 12 months from date of delivery
- Response to your inquiry within 24 hours
- We provide support in Chinese, English, French, German, Japanese and Spanish
- Extensive multi-media technical resources to help you
- We investigate all quality concerns to ensure our products perform to the highest standards

If the product does not perform as described on this datasheet, we will offer a refund or replacement. For full details of the Abpromise, please visit <https://www.abcam.com/abpromise> or contact our technical team.

Terms and conditions

- Guarantee only valid for products bought direct from Abcam or one of our authorized distributors