

Product datasheet

Recombinant human NSE protein ab168023

[1 References](#) [1 Image](#)

Description

Product name	Recombinant human NSE protein
Biological activity	Specific activity: >8 units/ml. One unit will convert 1.0 µmole of 2-phosphoglycerate to phosphoenol pyruvate per minute at pH 7.5 at 25°C.
Purity	> 95 % SDS-PAGE.
Endotoxin level	< 1.000 Eu/µg
Expression system	Escherichia coli
Accession	<u>P09104</u>
Protein length	Full length protein
Animal free	No
Nature	Recombinant
Species	Human
Sequence	MSIEKWARE ILDSRGNPTV EVDLYTAKGL FRAAVPSGAS TGIYEALRLR DGDKQRYLGK GVLKAVDHIN STIAPALISS GLSVVEQEKL DNLMLELDGT ENKSKFGANA ILGVSLAVCK AGAAERELPL YRHIAQLAGN SDLILPVPAF NVINGGSHAG NKLAMQEFMI LPVGAESFRD AMRLGAEVYH TLKGVKDKY GKDATNVGDE GGFAPNILEN SEALELVKEA IDKAGYTEKI VIGMDVAASE FYRDGKYDL D FKSPDPSRY ITGDQLGALY QDFVRDYPVV SIEDPFDQDD WAAWSKFTAN VGIQV/GDDL TVTNPKRIER AVEEKACNCL LLKVNQIGSV TEAIQACKLA QENGWGMVS HRSGETEDTF IADLVVGLCT GQIKTGAPCR SERLAKYNQL MRIEEEELGDE ARFAGHNFRN PSVL
Predicted molecular weight	47 kDa
Amino acids	1 to 434

Specifications

Our **Abpromise guarantee** covers the use of **ab168023** in the following tested applications.

The application notes include recommended starting dilutions; optimal dilutions/concentrations should be determined by the end user.

Applications	SDS-PAGE
	Functional Studies
Form	Liquid
Additional notes	This product is manufactured by BioVision, an Abcam company and was previously called 6362 Human Recombinant Neuron-Specific Enolase (NSE). 6362-100 is the same size as the 100 µg size of ab168023.

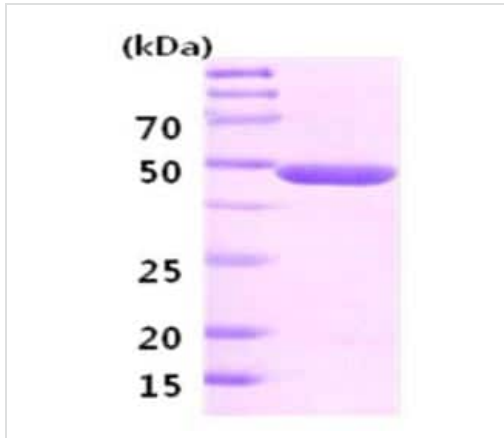
Preparation and Storage

Stability and Storage	<p>Shipped at 4°C. Store at +4°C short term (1-2 weeks). Upon delivery aliquot. Store at -20°C or -80°C. Avoid freeze / thaw cycle.</p> <p>pH: 7.50</p> <p>Constituents: 0.75% Potassium chloride, 0.32% Tris HCl, 0.06% Magnesium sulphate</p> <p>This product is an active protein and may elicit a biological response in vivo, handle with caution.</p>
------------------------------	-------------------------------------------------------------------------------------------------------------------------------------------------------------------------------------------------------------------------------------------------------------------------------------------------------------------------------------------------------------

General Info

Function	Has neurotrophic and neuroprotective properties on a broad spectrum of central nervous system (CNS) neurons. Binds, in a calcium-dependent manner, to cultured neocortical neurons and promotes cell survival.
Tissue specificity	The alpha/alpha homodimer is expressed in embryo and in most adult tissues. The alpha/beta heterodimer and the beta/beta homodimer are found in striated muscle, and the alpha/gamma heterodimer and the gamma/gamma homodimer in neurons.
Pathway	Carbohydrate degradation; glycolysis; pyruvate from D-glyceraldehyde 3-phosphate: step 4/5.
Sequence similarities	Belongs to the enolase family.
Developmental stage	During ontogenesis, there is a transition from the alpha/alpha homodimer to the alpha/beta heterodimer in striated muscle cells, and to the alpha/gamma heterodimer in nerve cells.
Cellular localization	Cytoplasm. Cell membrane. Can translocate to the plasma membrane in either the homodimeric (alpha/alpha) or heterodimeric (alpha/gamma) form.

Images



15% SDS-PAGE analysis of 3µg ab168023.

SDS-PAGE - Recombinant human NSE protein
(ab168023)

Please note: All products are "FOR RESEARCH USE ONLY. NOT FOR USE IN DIAGNOSTIC PROCEDURES"

Our Abpromise to you: Quality guaranteed and expert technical support

- Replacement or refund for products not performing as stated on the datasheet
- Valid for 12 months from date of delivery
- Response to your inquiry within 24 hours
- We provide support in Chinese, English, French, German, Japanese and Spanish
- Extensive multi-media technical resources to help you
- We investigate all quality concerns to ensure our products perform to the highest standards

If the product does not perform as described on this datasheet, we will offer a refund or replacement. For full details of the Abpromise, please visit <https://www.abcam.com/abpromise> or contact our technical team.

Terms and conditions

- Guarantee only valid for products bought direct from Abcam or one of our authorized distributors