

## Product datasheet

# Recombinant Human NSMCE1 protein ab167918

1 Image

### Description

---

<b>Product name</b>	Recombinant Human NSMCE1 protein
<b>Purity</b>	> 95 % SDS-PAGE.
<b>Expression system</b>	Escherichia coli
<b>Accession</b>	<u><a href="#">Q8WV22</a></u>
<b>Protein length</b>	Full length protein
<b>Animal free</b>	No
<b>Nature</b>	Recombinant
<b>Species</b>	Human
<b>Sequence</b>	MGSSHHHHHH SSGLVPRGSH MGSMQGSTRR MGVMTDVHRR FLQLLMTHGV LEEWDVKRLQ THCYKVHDRN ATVDKLEDFI NNINSVLESL YIEIKRGVTE DDGRPIYALV NLATTSISKM ATDFAENELD LFRKALELII DSETGFASST NILNLVDQLK GKKMRKKEAE QVLQKFVQNK WLIEKEGEFT LHGRAILEME QYRETYPDA VKICNICHSL LIQQQSCETC GIRMHLPCVA KYFQSNAEPR CPHCNDYWPH EIPKVFDPK ERESGVLKSN KKSLRSRQH
<b>Predicted molecular weight</b>	33 kDa including tags
<b>Amino acids</b>	1 to 266
<b>Tags</b>	His tag N-Terminus

### Specifications

---

Our **Abpromise guarantee** covers the use of **ab167918** in the following tested applications.

The application notes include recommended starting dilutions; optimal dilutions/concentrations should be determined by the end user.

<b>Applications</b>	Mass Spectrometry SDS-PAGE
<b>Mass spectrometry</b>	MALDI-TOF
<b>Form</b>	Liquid

## Preparation and Storage

---

### Stability and Storage

Shipped at 4°C. Store at +4°C short term (1-2 weeks). Upon delivery aliquot. Store at -20°C or -80°C. Avoid freeze / thaw cycle.

pH: 8.00

Constituents: 0.02% DTT, 0.32% Tris HCl, 20% Glycerol (glycerin, glycerine), 0.88% Sodium chloride

## General Info

---

### Relevance

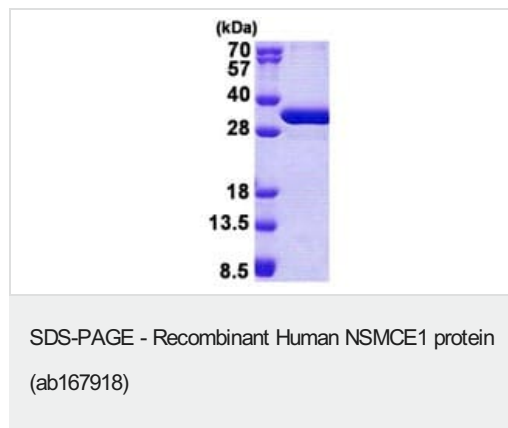
NSMCE1 is a probable component of the SMC5-SMC6 complex, a complex involved in DNA double strand breaks by homologous recombination. The complex may promote sister chromatid homologous recombination by recruiting the SMC1-SMC3 cohesin complex to double strand breaks.

### Cellular localization

Nucleus. Chromosome, telomere

## Images

---



3 µg ab167918 on 15% SDS-PAGE

**Please note:** All products are "FOR RESEARCH USE ONLY. NOT FOR USE IN DIAGNOSTIC PROCEDURES"

## Our Abpromise to you: Quality guaranteed and expert technical support

---

- Replacement or refund for products not performing as stated on the datasheet
- Valid for 12 months from date of delivery
- Response to your inquiry within 24 hours
- We provide support in Chinese, English, French, German, Japanese and Spanish
- Extensive multi-media technical resources to help you
- We investigate all quality concerns to ensure our products perform to the highest standards

If the product does not perform as described on this datasheet, we will offer a refund or replacement. For full details of the Abpromise, please visit <https://www.abcam.com/abpromise> or contact our technical team.

## Terms and conditions

---

- Guarantee only valid for products bought direct from Abcam or one of our authorized distributors