

Product datasheet

Recombinant Human NUBP1 protein ab202610

1 Image

Description

Product name	Recombinant Human NUBP1 protein
Purity	> 90 % SDS-PAGE. ab202610 was purified by using conventional chromatography techniques.
Expression system	Escherichia coli
Accession	<u>P53384</u>
Protein length	Full length protein
Animal free	No
Nature	Recombinant
Species	Human
Sequence	MGSSHHHHHSSGLVPRGSHMGSMEEVPHDCPGADSA QAGRGASCQGCPN QRLCASGAGATPDTAIEEIKEKMKTVKHKILVLSGKGGVG KSTFSAHLAH GLAEDENTQIALLDIDICGPSIPKIMGLEGEQVHQSGSGWS PVYVEDNLG VMSVGFLLSSPDDAVVWRGPKKNGMIKQFLRDVDWGEV DYLMDTPPGTS DEHLSVVRYLATAHIDGAVIITTPQEVSLQDVRKEINFCRKV KLPIIGVV ENMSGFICPKCKKESQIFPPTTGGAEIMCQDLEVPLLGRV PLDPLIGKNC DKGQSFFIDAPDSPATLAYRSIIQRIQEFCNLHQSKEENLIS S
Predicted molecular weight	37 kDa including tags
Amino acids	1 to 320
Tags	His tag N-Terminus
Additional sequence information	NP_002475

Specifications

Our **Abpromise guarantee** covers the use of **ab202610** in the following tested applications.

The application notes include recommended starting dilutions; optimal dilutions/concentrations should be determined by the end user.

Applications	Mass Spectrometry SDS-PAGE
Mass spectrometry	MALDI-TOF
Form	Liquid

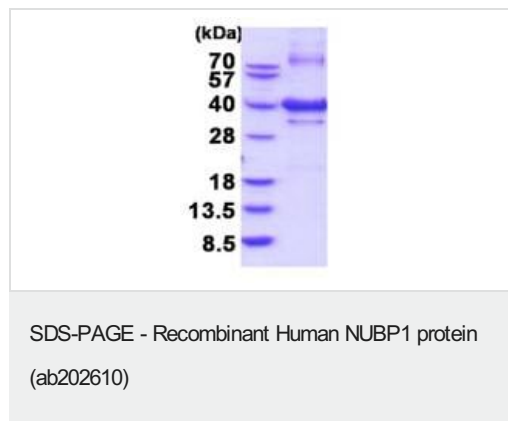
Preparation and Storage

Stability and Storage	Shipped at 4°C. Store at +4°C short term (1-2 weeks). Upon delivery aliquot. Store at -20°C or -80°C. Avoid freeze / thaw cycle. pH: 7.40 Constituents: 10% Glycerol (glycerin, glycerine), 0.02% DTT, 89% PBS
------------------------------	--------------------------------------------------------------------------------------------------------------------------------------------------------------------------------------------------------------------------

General Info

Function	Implicated in the regulation of centrosome duplication (By similarity). Component of the cytosolic iron-sulfur (Fe/S) protein assembly machinery. Required for maturation of extramitochondrial Fe/S proteins. May bind and transfer 2 labile 4Fe-4S clusters to target apoproteins.
Sequence similarities	Belongs to the Mrp/NBP35 ATP-binding proteins family. NUBP1/NBP35 subfamily.
Cellular localization	Cytoplasm.

Images



15% SDS-PAGE analysis of ab202610 (3µg).

Please note: All products are "FOR RESEARCH USE ONLY. NOT FOR USE IN DIAGNOSTIC PROCEDURES"

Our Abpromise to you: Quality guaranteed and expert technical support

- Replacement or refund for products not performing as stated on the datasheet
- Valid for 12 months from date of delivery
- Response to your inquiry within 24 hours
- We provide support in Chinese, English, French, German, Japanese and Spanish
- Extensive multi-media technical resources to help you

- We investigate all quality concerns to ensure our products perform to the highest standards

If the product does not perform as described on this datasheet, we will offer a refund or replacement. For full details of the Abpromise, please visit <https://www.abcam.com/abpromise> or contact our technical team.

Terms and conditions

- Guarantee only valid for products bought direct from Abcam or one of our authorized distributors