

Recombinant Human Nucleoporin p62/NUP62 protein

ab161728

1 Image

Description

Product name	Recombinant Human Nucleoporin p62/NUP62 protein		
Expression system	Wheat germ		
Protein length	Full length protein		
Animal free	No		
Nature	Recombinant		
Species	Human		
Sequence	MSGFNFGGTGAPTGGFTFGTAKTATTTTPATGFSFSTSGTG GFNFGAPFQP ATSTPSTGLFSLATQTPATQTTGFTFGTATLASGGTGFSLG IGASKLNLS NTAATPAMANPSGFGLGSSNLTNAISSTVTSSQGTAPTGF VFGPSTTSVA PATTSGGFSFTGGSTAQPSGFNIGSAGNSAQPTAPATLPF TPATPAATTA GATQPAAPTPTATITSTGPSLFAFIATAPTSSATTGLSLCTP VTTAGAPT AGTQGFSLKAPGAASGTSTTTSTAATATATTTSSSSTTGF ALNLKPLAPA GIPSNTAAAVTAPPGPGAAAGAAASSAMTYAQLESINKW SLELEDQERH FLQQATQVNAWDRTLIENTGEKITSLHREVEKVKLDQKRLD QELDFILSQQ KELEDLLSPLEELVKEQSGTMYLQHADEEREKTYKLAENID AQLKRMAQD LKDIIEHLNTSGAPADTSDPLQQICKILNAHMDSLQWIDQNS ALLQRKVE EVTKVCEGRRKEQERSFRITFD		
Amino acids	1 to 522		
Tags	GST tag N-Terminus		

Specifications

Our **Abpromise guarantee** covers the use of **ab161728** in the following tested applications.

The application notes include recommended starting dilutions; optimal dilutions/concentrations should be determined by the end user.

Applications

ELISA

Western blot

Form

Liquid

Additional notes

This product was previously labelled as Nucleoporin p62.

Preparation and Storage

Stability and Storage

Shipped on dry ice. Upon delivery aliquot and store at -80°C. Avoid freeze / thaw cycles.

pH: 8.00

Constituents: 0.31% Glutathione, 0.79% Tris HCl

General Info

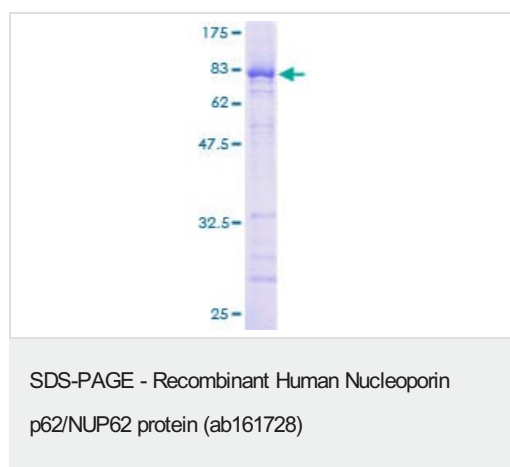
Relevance

The nuclear pore complex is a structure that extends across the nuclear envelope and regulates the flow of macromolecules between the cytoplasm and the nucleus. Nucleoporins are the main components of the nuclear pore complex in eukaryotic cells. Nup 62 is localized to the nuclear pore central plug. This protein associates with the importin alpha/beta complex which is involved in the import of proteins containing nuclear localization signals. There are multiple transcript variants of this gene, however, they encode a single protein isoform. This protein undergoes post-translational modifications. It contains about 10 N-acetylglucosamine side chain sites.

Cellular localization

Nucleus; nuclear pore complex. Cytoplasm; cytoskeleton; spindle pole. Note: Central region of the nuclear pore, within the transporter. During mitotic cell division, it associates with the poles of the mitotic spindle.

Images



ab161728 on a 12.5% SDS-PAGE stained with Coomassie Blue.

Please note: All products are "FOR RESEARCH USE ONLY. NOT FOR USE IN DIAGNOSTIC PROCEDURES"

Our Abpromise to you: Quality guaranteed and expert technical support

- Replacement or refund for products not performing as stated on the datasheet
- Valid for 12 months from date of delivery
- Response to your inquiry within 24 hours

- We provide support in Chinese, English, French, German, Japanese and Spanish
- Extensive multi-media technical resources to help you
- We investigate all quality concerns to ensure our products perform to the highest standards

If the product does not perform as described on this datasheet, we will offer a refund or replacement. For full details of the Abpromise, please visit <https://www.abcam.com/abpromise> or contact our technical team.

Terms and conditions

- Guarantee only valid for products bought direct from Abcam or one of our authorized distributors