

Recombinant Human OAT3 protein ab160461

1 Image

Description	
Product name	Recombinant Human OAT3 protein
Expression system	Wheat germ
Protein length	Full length protein
Animal free	No
Nature	Recombinant
Species	Human
Sequence	MTFSEILDRVGSMGHFQFLHVAILGLPILNMANHNLLQIFTA ATPVHHCR PPHNASTGPWVLPMPGNGKPERCLRFVHPPNASLPNDT QRAMEPCLDGWV YNSTKDSVTEWDLVCNSNKLKEMAQSIFMAGILIGGLVLG DLSDRFGRR PILTCSYLLLAASGSGAAFSPTFPIMVFRFLCGFGISGITLS TVILNVE WVPTRMRAIMSTALGYCYTFGQFILPGLAYAIPQWRWLQLT VSIPFFVFF LSSWWTPESIRWLVLSGKSSKALKILRRVAVFNGKKEEG ERLSLEELKLN LQKEISLAKAKYTASDLFRIPMLRRMTFCLSLAWFATGFAY YSLAMGVEE FGVNLYLQIIFGGVDVPAKFITILSLSYLGRHTTQAAALLLAG GAILAL TFVPLDLQTVRTLAVFGKGCLSSSFSCFLYTSELYPTVI RQTGMGVSN LWTRVGSMVSPLVKITGEVQPFIPNIYGITALLGGSAAFLP ETLNQPL PETIEDLENWSLRAKKPKQEPEVEKASQRIPLQPHGPGLG SS
Amino acids	1 to 542
Tags	GST tag N-Terminus

Specifications

Our **Abpromise guarantee** covers the use of **ab160461** in the following tested applications.

The application notes include recommended starting dilutions; optimal dilutions/concentrations should be determined by the end user.

Applications	ELISA
	Western blot
Form	Liquid
Additional notes	This product was previously labelled as SLC22A8.

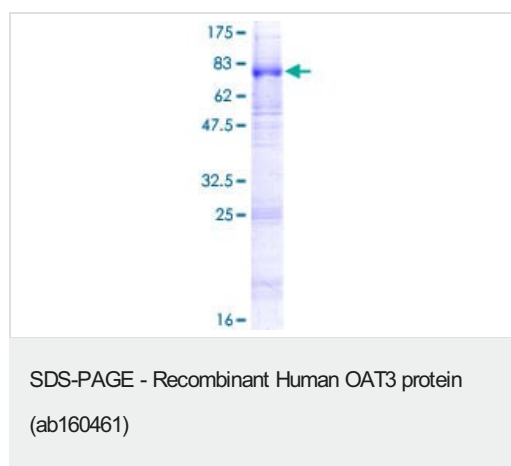
Preparation and Storage

Stability and Storage	Shipped on dry ice. Upon delivery aliquot and store at -80°C. Avoid freeze / thaw cycles.
	pH: 8.00
	Constituents: 0.31% Glutathione, 0.79% Tris HCl

General Info

Function	Plays an important role in the excretion/detoxification of endogenous and exogenous organic anions, especially from the brain and kidney. Involved in the transport basolateral of steviol, fexofenadine. Transports benzylpenicillin (PCG), estrone-3-sulfate (E1S), cimetidine (CMD), 2,4-dichloro-phenoxyacetate (2,4-D), p-amino-hippurate (PAH), acyclovir (ACV) and ochratoxin (OTA).
Tissue specificity	Expressed in kidney.
Sequence similarities	Belongs to the major facilitator (TC 2.A.1) superfamily. Organic cation transporter (TC 2.A.1.19) family.
Cellular localization	Basolateral cell membrane. Localizes on the brush border membrane of the choroid epithelial cells. Localizes to the basolateral membrane of the proximal tubular cells. Localizes on the abluminal and possibly, luminal membrane of the brain capillary endothelial cells (BCEC) (By similarity).

Images



ab160461 on a 12.5% SDS-PAGE stained with Coomassie Blue.

Please note: All products are "FOR RESEARCH USE ONLY. NOT FOR USE IN DIAGNOSTIC PROCEDURES"

Our Abpromise to you: Quality guaranteed and expert technical support

- Replacement or refund for products not performing as stated on the datasheet
- Valid for 12 months from date of delivery
- Response to your inquiry within 24 hours

- We provide support in Chinese, English, French, German, Japanese and Spanish
- Extensive multi-media technical resources to help you
- We investigate all quality concerns to ensure our products perform to the highest standards

If the product does not perform as described on this datasheet, we will offer a refund or replacement. For full details of the Abpromise, please visit <https://www.abcam.com/abpromise> or contact our technical team.

Terms and conditions

- Guarantee only valid for products bought direct from Abcam or one of our authorized distributors