

Product datasheet

Recombinant Human Ogg1 protein ab98249

★ ★ ★ ★ ★ [1 Abreviews](#) [2 References](#) [1 Image](#)

Description

Product name	Recombinant Human Ogg1 protein
Purity	> 90 % SDS-PAGE. ab98249 was purified using conventional chromatography.
Expression system	Escherichia coli
Accession	<u>O15527</u>
Protein length	Full length protein
Animal free	No
Nature	Recombinant
Species	Human
Sequence	<p>MGSSHHHHHHSSGLVPRGSHTGSMPARALLPRRMGHR TLASTPALWASIP CPRSELRLDLVLP SGQSFRWREQSPAHW SGVLADQVWT LTQTEEQLHCTV YRGDKSQASRPTPDELEAVRKYFQLDVT LAQLYHHWGSV DSHFQEVAQKF QGVRLLRQDPIEC LFSFICSSNNNIARITGMVERLCQAFGP RLIQLDDVT YHGFP SLQALAGPEVEAHLRKLGLGYRARYVSASARAILE EQGGLAWLQQ LRESSYEEAHKALC ILPGVGTKVADCICLMALDKPQAVPV DVHMMWHIAQR DYSWHPTTSQAKGPSPQTNKELGNFFRSLWGPYAGWAQ AVLFSADLRQCR HAQEPPAKRRKGSKGPEG</p>
Predicted molecular weight	41 kDa including tags
Amino acids	1 to 345
Tags	His tag N-Terminus

Specifications

Our **Abpromise guarantee** covers the use of **ab98249** in the following tested applications.

The application notes include recommended starting dilutions; optimal dilutions/concentrations should be determined by the end user.

Applications SDS-PAGE

	Mass Spectrometry
Mass spectrometry	MALDI-TOF
Form	Liquid

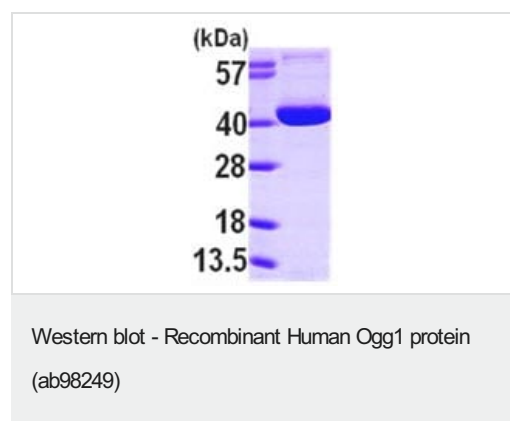
Preparation and Storage

Stability and Storage	Shipped at 4°C. Upon delivery aliquot and store at -20°C or -80°C. Avoid repeated freeze / thaw cycles. pH: 8.00 Constituents: 0.316% Tris HCl, 40% Glycerol (glycerin, glycerine), 0.58% Sodium chloride
------------------------------	---

General Info

Function	DNA repair enzyme that incises DNA at 8-oxoG residues. Excises 7,8-dihydro-8-oxoguanine and 2,6-diamino-4-hydroxy-5-N-methylformamidopyrimidine (FAPY) from damaged DNA. Has a beta-lyase activity that nicks DNA 3' to the lesion.
Tissue specificity	Ubiquitous.
Involvement in disease	Defects in OGG1 may be a cause of renal cell carcinoma (RCC) [MIM:144700]. It is a heterogeneous group of sporadic or hereditary carcinoma derived from cells of the proximal renal tubular epithelium. It is subclassified into clear cell renal carcinoma (non-papillary carcinoma), papillary renal cell carcinoma, chromophobe renal cell carcinoma, collecting duct carcinoma with medullary carcinoma of the kidney, and unclassified renal cell carcinoma.
Sequence similarities	Belongs to the type-1 OGG1 family.
Cellular localization	Mitochondrion; Nucleus and Nucleus > nucleoplasm. Nucleus speckle. Nucleus matrix. Together with APEX1 is recruited to nuclear speckles in UVA-irradiated cells.

Images



15% SDS-PAGE analysis of 3µg ab98249

Please note: All products are "FOR RESEARCH USE ONLY. NOT FOR USE IN DIAGNOSTIC PROCEDURES"

Our Abpromise to you: Quality guaranteed and expert technical support

- Replacement or refund for products not performing as stated on the datasheet
- Valid for 12 months from date of delivery
- Response to your inquiry within 24 hours
- We provide support in Chinese, English, French, German, Japanese and Spanish
- Extensive multi-media technical resources to help you
- We investigate all quality concerns to ensure our products perform to the highest standards

If the product does not perform as described on this datasheet, we will offer a refund or replacement. For full details of the Abpromise, please visit <https://www.abcam.com/abpromise> or contact our technical team.

Terms and conditions

- Guarantee only valid for products bought direct from Abcam or one of our authorized distributors