

## Product datasheet

# Recombinant Human Ornithine Carbamoyltransferase/OTC protein ab123452

[2 Images](#)

### Description

---

<b>Product name</b>	Recombinant Human Ornithine Carbamoyltransferase/OTC protein
<b>Purity</b>	> 80 % SDS-PAGE.
<b>Expression system</b>	Escherichia coli
<b>Accession</b>	<b><u>P00480</u></b>
<b>Protein length</b>	Full length protein
<b>Animal free</b>	No
<b>Nature</b>	Recombinant
<b>Species</b>	Human
<b>Sequence</b>	MLFNLRILLN NAAFRNGHNF MVRNFRCGQP LQNKVQLKGR DLLTLKNFTG EEIKYMLWLS ADLKFRKQK GEYLPLLQ GK SLGMIFEKRS TRTRLSTETG FALLGGHPCF LTTQDIHLGV NESLTD TARV LSSMADAVLA RVYKQSDLDT LAKEASIP II NGLSDLYHPI QILADYLT LQ EHYSSLKGLT LSWIGDGNNI LHSIMMSAAK FGMHLQAATP KGYEPDASVT KLAEQYAKEN GTKLLL TNDP LEAAHGGNVL ITDTWISMGQ EEEEKKRLQA FQGYQVTMKT AKVAASDWTF LHCLPRKPEE VDDEVFYSR SLVFPEAENR KWTIMAVMVS LLTDYSPQLQKPKFH HHHHHH
<b>Predicted molecular weight</b>	41 kDa
<b>Amino acids</b>	1 to 354
<b>Tags</b>	His tag C-Terminus

### Specifications

---

Our **Abpromise guarantee** covers the use of **ab123452** in the following tested applications.

The application notes include recommended starting dilutions; optimal dilutions/concentrations should be determined by the end user.

<b>Applications</b>	SDS-PAGE Western blot
---------------------	--------------------------

	ELISA
<b>Form</b>	Liquid
<b>Additional notes</b>	Product was previously marketed under the MitoSciences sub-brand. Previously labelled as Ornithine Carbamoyltransferase.

## Preparation and Storage

---

<b>Stability and Storage</b>	Shipped on dry ice. Upon delivery aliquot and store at -80°C. Avoid freeze / thaw cycles. pH: 7.5 Constituents: 0.79% Tris HCl, 0.15% EDTA, 10% Glycerol (glycerin, glycerine), 0.88% Sodium chloride
------------------------------	---

## General Info

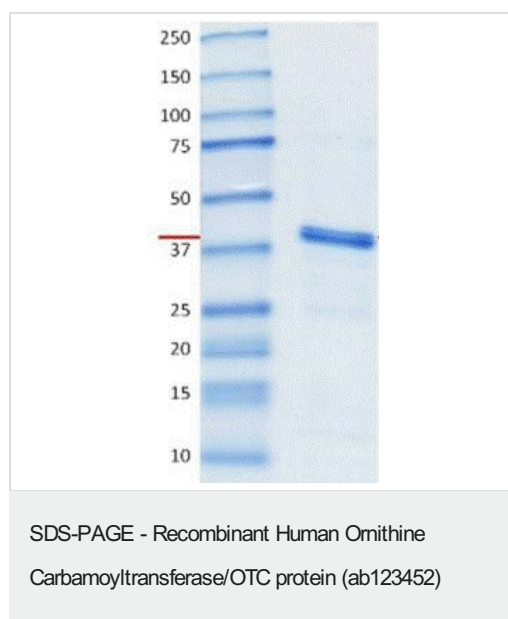
---

<b>Tissue specificity</b>	Mainly expressed in liver and intestinal mucosa.
<b>Pathway</b>	Nitrogen metabolism; urea cycle; L-citrulline from L-ornithine and carbamoyl phosphate: step 1/1.
<b>Involvement in disease</b>	Ornithine carbamoyltransferase deficiency
<b>Sequence similarities</b>	Belongs to the ATCase/OTCase family.
<b>Post-translational modifications</b>	Acetylation at Lys-88 negatively regulates ornithine carbamoyltransferase activity in response to nutrient signals.
<b>Cellular localization</b>	Mitochondrion matrix.

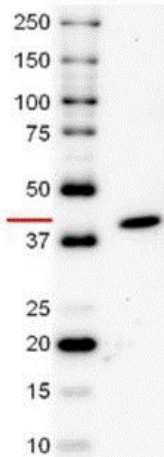
---

## Images

---



10-20% acrylamide separation gel showing ab123452 at approximately 40kDa (1µg).



Western blot - Recombinant Human Ornithine  
Carbamoyltransferase/OTC protein (ab123452)

Anti-Ornithine Carbamoyltransferase/OTC antibody ([ab86665](#)) at  
0.5 µg/ml + Recombinant Human Ornithine  
Carbamoyltransferase/OTC protein (ab123452) at 0.01 µg

**Secondary**

Goat polyclonal to Rabbit IgG – H&L – Pre-Adsorbed (HRP) at  
1/10000 dilution

Developed using the ECL technique.

**Predicted band size:** 40 kDa

**Observed band size:** 40 kDa

**Exposure time:** 5 minutes

**Please note:** All products are "FOR RESEARCH USE ONLY. NOT FOR USE IN DIAGNOSTIC PROCEDURES"

**Our Abpromise to you: Quality guaranteed and expert technical support**

---

- Replacement or refund for products not performing as stated on the datasheet
- Valid for 12 months from date of delivery
- Response to your inquiry within 24 hours
  
- We provide support in Chinese, English, French, German, Japanese and Spanish
- Extensive multi-media technical resources to help you
- We investigate all quality concerns to ensure our products perform to the highest standards

If the product does not perform as described on this datasheet, we will offer a refund or replacement. For full details of the Abpromise, please visit <https://www.abcam.com/abpromise> or contact our technical team.

**Terms and conditions**

---

- Guarantee only valid for products bought direct from Abcam or one of our authorized distributors