

Product datasheet

Recombinant Human Ornithine Carbamoyltransferase/OTC protein ab124552

1 Image

Description

Product name	Recombinant Human Ornithine Carbamoyltransferase/OTC protein		
Purity	> 95 % SDS-PAGE. Purified by using conventional chromatography techniques.		
Expression system	Escherichia coli		
Accession	<u>P00480</u>		
Protein length	Full length protein		
Animal free	No		
Nature	Recombinant		
Species	Human		
Sequence	MGSSHHHHHHSSGLVPRGSHMGSHMNKVQLKGRDLLTL KNFTGEEIKYML WLSADLKFRICKQGEYLP LLQGKSLGMIFEKRSTRTRLSTE TGFALLGGH PCFLT TQDIHLGVNESLTD TARVLSSMADAVLARVYKQSD LDTLAKEASI PIINGLS DLYHP IQILADYLT LQEHYSSLKGLT LSWIGDGNNIL HSIMMS AAKFGMHLQAATPKGYEPDASVTKLAEQYAKENGTKLLLT NDPLEAAHGG NVLITDTWISMGQEEEEKKRLQAFQGYQVTMKTAKVAASD WTF LHC LPRK PEEV DDEVFYSPRSLVFPEAENRKWTIMAVMVSL LTDYS PQLQKPKF		
Predicted molecular weight	39 kDa		
Amino acids	33 to 354		
Tags	His tag N-Terminus		

Specifications

Our **Abpromise guarantee** covers the use of **ab124552** in the following tested applications.

The application notes include recommended starting dilutions; optimal dilutions/concentrations should be determined by the end user.

Applications	Mass Spectrometry SDS-PAGE
Mass spectrometry	MALDI-TOF
Form	Liquid
Additional notes	Previously labelled as Ornithine Carbamoyltransferase.

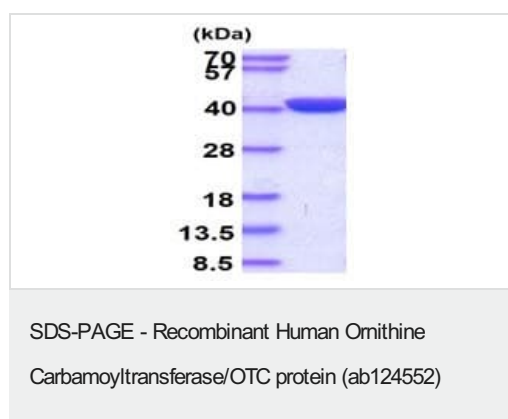
Preparation and Storage

Stability and Storage	Shipped at 4°C. Store at +4°C short term (1-2 weeks). Upon delivery aliquot. Store at -20°C or -80°C. Avoid freeze / thaw cycle. pH: 6.00 Constituents: 0.39% MES, 0.03% DTT, 10% Glycerol (glycerin, glycerine), 0.58% Sodium chloride
------------------------------	---

General Info

Tissue specificity	Mainly expressed in liver and intestinal mucosa.
Pathway	Nitrogen metabolism; urea cycle; L-citrulline from L-ornithine and carbamoyl phosphate: step 1/1.
Involvement in disease	Ornithine carbamoyltransferase deficiency
Sequence similarities	Belongs to the ATCase/OTCase family.
Post-translational modifications	Acetylation at Lys-88 negatively regulates ornithine carbamoyltransferase activity in response to nutrient signals.
Cellular localization	Mitochondrion matrix.

Images



15% SDS-PAGE showing ab124552 (3 µg) at approximately 38.9 kDa.

Please note: All products are "FOR RESEARCH USE ONLY. NOT FOR USE IN DIAGNOSTIC PROCEDURES"

Our Abpromise to you: Quality guaranteed and expert technical support

- Replacement or refund for products not performing as stated on the datasheet

- Valid for 12 months from date of delivery
- Response to your inquiry within 24 hours
- We provide support in Chinese, English, French, German, Japanese and Spanish
- Extensive multi-media technical resources to help you
- We investigate all quality concerns to ensure our products perform to the highest standards

If the product does not perform as described on this datasheet, we will offer a refund or replacement. For full details of the Abpromise, please visit <https://www.abcam.com/abpromise> or contact our technical team.

Terms and conditions

- Guarantee only valid for products bought direct from Abcam or one of our authorized distributors