

Product datasheet

Recombinant Human Ornithine Carbamoyltransferase/OTC protein (Tagged) ab235822

1 Image

Description

Product name	Recombinant Human Ornithine Carbamoyltransferase/OTC protein (Tagged)		
Purity	> 90 % SDS-PAGE.		
Expression system	Escherichia coli		
Accession	<b>P00480</b>		
Protein length	Full length protein		
Animal free	No		
Nature	Recombinant		
Species	Human		
Sequence	NKVQLKGRDLLTLKNFTGEEIKYMLWLSADLKFRICKQKGEY LPLLQGKSL GMIFEKRSTRTRLSTETGFALLGGHPCFLTQTQDIHLGVNES LTD TARVLS SMADAVLARVYKQSDLDLTAKEASIPINGLSDL YHPILAD YLT LQEH YSSLKGLT LSWIGDGNNILHSIMMSAAKFGMHLQAATPKGY EPDASVTKL AEQYAKENGTKLLL TNDPLEAAHG GNVLTDTWISMGQEE EKKKRLQAFQ GYQVTMKTAKVAASDWTF L HCLPRKPEEVDDEVFYSPRS LVFPEAENRKW TIMAVMVSLT DYSPQLQKPKF		
Predicted molecular weight	52 kDa including tags		
Amino acids	33 to 354		
Tags	His tag N-Terminus		
Additional sequence information	Mature chain lacking the transit peptide. N-terminal 6xHis-SUMO-tagged		

Specifications

Our **Abpromise guarantee** covers the use of **ab235822** in the following tested applications.

The application notes include recommended starting dilutions; optimal dilutions/concentrations should be determined by the end user.

<b>Applications</b>	SDS-PAGE
<b>Form</b>	Liquid
<b>Additional notes</b>	Previously labelled as Ornithine Carbamoyltransferase.

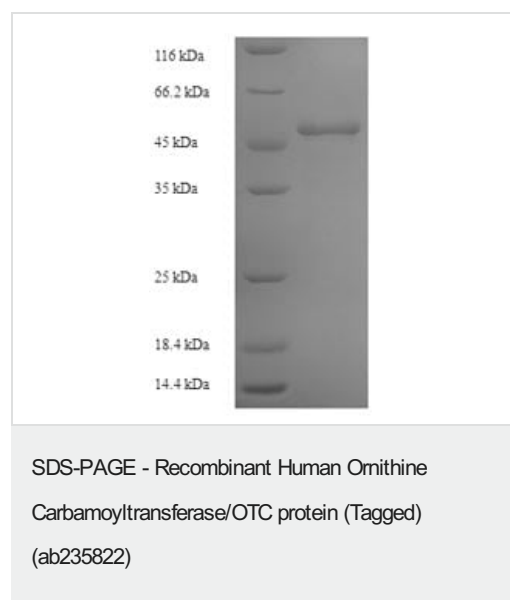
## Preparation and Storage

<b>Stability and Storage</b>	Shipped at 4°C. Store at -20°C or -80°C. Avoid freeze / thaw cycle. pH: 7.2 Constituents: Tris buffer, 50% Glycerol (glycerin, glycerine)
------------------------------	---

## General Info

<b>Tissue specificity</b>	Mainly expressed in liver and intestinal mucosa.
<b>Pathway</b>	Nitrogen metabolism; urea cycle; L-citrulline from L-ornithine and carbamoyl phosphate: step 1/1.
<b>Involvement in disease</b>	Ornithine carbamoyltransferase deficiency
<b>Sequence similarities</b>	Belongs to the ATCase/OTCase family.
<b>Post-translational modifications</b>	Acetylation at Lys-88 negatively regulates ornithine carbamoyltransferase activity in response to nutrient signals.
<b>Cellular localization</b>	Mitochondrion matrix.

## Images



ab235822 analyzed by (Tris-Glycine gel) discontinuous SDS-PAGE (reduced) with 5% enrichment gel and 15% separation gel.

**Please note:** All products are "FOR RESEARCH USE ONLY. NOT FOR USE IN DIAGNOSTIC PROCEDURES"

## Our Abpromise to you: Quality guaranteed and expert technical support

- Replacement or refund for products not performing as stated on the datasheet

- Valid for 12 months from date of delivery
- Response to your inquiry within 24 hours
- We provide support in Chinese, English, French, German, Japanese and Spanish
- Extensive multi-media technical resources to help you
- We investigate all quality concerns to ensure our products perform to the highest standards

If the product does not perform as described on this datasheet, we will offer a refund or replacement. For full details of the Abpromise, please visit <https://www.abcam.com/abpromise> or contact our technical team.

#### **Terms and conditions**

---

- Guarantee only valid for products bought direct from Abcam or one of our authorized distributors