

Product datasheet

Recombinant Human PACE4 protein ab114961

[1 Image](#)

Description

Product name	Recombinant Human PACE4 protein
Expression system	Wheat germ
Accession	<u>P29122-1</u>
Protein length	Protein fragment
Animal free	No
Nature	Recombinant
Species	Human
Sequence	REECIHCAKNFHFHDWKCVPACGEGFYPEEMPGLPHKV CRRCDENCLSCA GSSRNCSRCKTGFTQLGTSCITNHTCSNADETFCEMVKS NRLCERKLIQ FCCRTCLLAG
Predicted molecular weight	38 kDa including tags
Amino acids	860 to 969

Specifications

Our **Abpromise guarantee** covers the use of **ab114961** in the following tested applications.

The application notes include recommended starting dilutions; optimal dilutions/concentrations should be determined by the end user.

Applications	ELISA SDS-PAGE Western blot
Form	Liquid

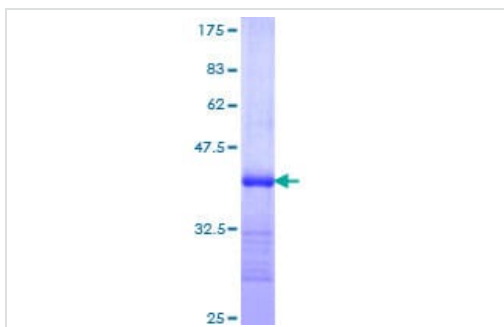
Preparation and Storage

Stability and Storage	Shipped on dry ice. Upon delivery aliquot and store at -80°C. Avoid freeze / thaw cycles. pH: 8.00 Constituents: 0.3% Glutathione, 0.79% Tris HCl
------------------------------	---

General Info

Function	Likely to represent an endoprotease activity within the constitutive secretory pathway, with unique restricted distribution in both neuroendocrine and non-neuroendocrine tissues and capable of cleavage at the RX(K/R)R consensus motif.
Tissue specificity	Each PACE4 isoform exhibits a unique restricted distribution. Isoform PACE4A-I is expressed in heart, brain, placenta, lung, skeletal muscle, kidney, pancreas, but at comparatively higher levels in the liver. Isoform PACE4A-II is at least expressed in placenta. Isoform PACE4B was only found in the embryonic kidney cell line from which it was isolated. Isoform PACE4C and isoform PACE4D are expressed in placenta. Isoform PACE4E-I is expressed in cerebellum, placenta and pituitary. Isoform PACE4E-II is at least present in cerebellum.
Sequence similarities	Belongs to the peptidase S8 family. Contains 1 homo B/P domain. Contains 1 PLAC domain.
Domain	The propeptide domain acts as an intramolecular chaperone assisting the folding of the zymogen within the endoplasmic reticulum. Isoform PACE4D lacks the propeptide domain.
Cellular localization	Secreted; Endomembrane system. Retained intracellularly probably through a hydrophobic cluster in their C-terminus and Endoplasmic reticulum. Not secreted, remains probably in zymogen form in endoplasmic reticulum.

Images



12.5% SDS-PAGE showing ab114961 at approximately 37.73kDa.
Stained with Coomassie Blue.

SDS-PAGE - Recombinant Human PACE4 protein
(ab114961)

Please note: All products are "FOR RESEARCH USE ONLY. NOT FOR USE IN DIAGNOSTIC PROCEDURES"

Our Abpromise to you: Quality guaranteed and expert technical support

- Replacement or refund for products not performing as stated on the datasheet
- Valid for 12 months from date of delivery
- Response to your inquiry within 24 hours
- We provide support in Chinese, English, French, German, Japanese and Spanish
- Extensive multi-media technical resources to help you
- We investigate all quality concerns to ensure our products perform to the highest standards

If the product does not perform as described on this datasheet, we will offer a refund or replacement. For full details of the Abpromise, please visit <https://www.abcam.com/abpromise> or contact our technical team.

Terms and conditions

- Guarantee only valid for products bought direct from Abcam or one of our authorized distributors