

Product datasheet

Recombinant Human PAEP/Glycodelin protein ab114684

[1 Image](#)

Description

Product name	Recombinant Human PAEP/Glycodelin protein
Expression system	Wheat germ
Accession	<u>P09466</u>
Protein length	Full length protein
Animal free	No
Nature	Recombinant
Species	Human
Sequence	MLCLLLTLGVALVCGVPAMDIPQTKQDLELPKLAGTWHS MAMATNNISLM ATLKAPLRVHITSLLPTPEDNLEVLHRWENNSCVEKKVLG EKTENPKKF KINYTVANEATLLD TDYDNFLFLCLQD TTTPIQSMMQCQYLA RVLVEDDEI MQGFIRAFRPLPRHLWYLLDLKQMEEPCRF
Predicted molecular weight	46 kDa including tags
Amino acids	1 to 180

Specifications

Our **Abpromise guarantee** covers the use of **ab114684** in the following tested applications.

The application notes include recommended starting dilutions; optimal dilutions/concentrations should be determined by the end user.

Applications	Western blot SDS-PAGE ELISA
Form	Liquid
Additional notes	This product was previously labelled as Placental Protein 14 / Glycodelin A.

Preparation and Storage

Stability and Storage

Shipped on dry ice. Upon delivery aliquot and store at -80°C. Avoid freeze / thaw cycles.

pH: 8.00

Constituents: 0.3% Glutathione, 0.79% Tris HCl

General Info

Function

This protein is, quantitatively, the main protein synthesized and secreted in the endometrium from mid-luteal phase of the menstrual cycle and during the first semester of pregnancy.

Sequence similarities

Belongs to the calycin superfamily. Lipocalin family.

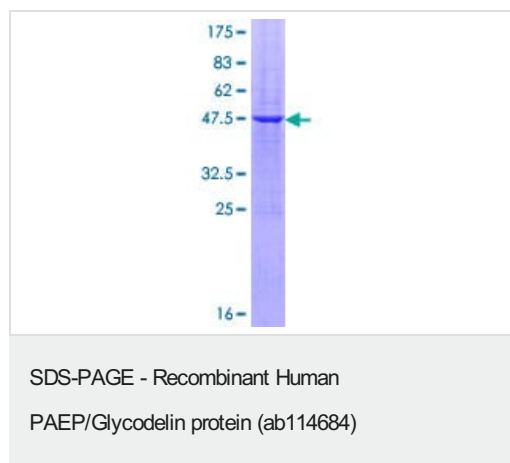
Post-translational modifications

At least two differentially glycosylated forms are found. Glycodelin-A (GdA) (amniotic fluid) with contraceptive and immunosuppressive activities and glycodelin-S (Gds) (seminal plasma) whose role is not yet known. The gender-specific glycosylation may serve to regulate key process involved in human reproduction.

Cellular localization

Secreted.

Images



ab114684 analysed on a 12.5% SDS-PAGE gel stained with Coomassie Blue.

Please note: All products are "FOR RESEARCH USE ONLY. NOT FOR USE IN DIAGNOSTIC PROCEDURES"

Our Abpromise to you: Quality guaranteed and expert technical support

- Replacement or refund for products not performing as stated on the datasheet
- Valid for 12 months from date of delivery
- Response to your inquiry within 24 hours
- We provide support in Chinese, English, French, German, Japanese and Spanish
- Extensive multi-media technical resources to help you
- We investigate all quality concerns to ensure our products perform to the highest standards

If the product does not perform as described on this datasheet, we will offer a refund or replacement. For full details of the Abpromise, please visit <https://www.abcam.com/abpromise> or contact our technical team.

Terms and conditions

- Guarantee only valid for products bought direct from Abcam or one of our authorized distributors