

## Product datasheet

# Recombinant Human PAEP/Glycodelin protein ab140569

1 Image

### Description

<b>Product name</b>	Recombinant Human PAEP/Glycodelin protein
<b>Purity</b>	> 90 % SDS-PAGE. ab140569 was purified using conventional chromatography techniques.
<b>Expression system</b>	Escherichia coli
<b>Accession</b>	<b><u>P09466</u></b>
<b>Protein length</b>	Full length protein
<b>Animal free</b>	No
<b>Nature</b>	Recombinant
<b>Species</b>	Human
<b>Sequence</b>	MGSSHHHHHH SSGLVPRGSH MGSM DIPQTK QDLELPKLAG TWHSMAMATN NISLMATLKA PLRVHITSL PTPEDNLEIV LHRWENNSCV EKKVLGEKTE NPKKFKINYT VANEATLLDT DYDNFLFLCL QDTTPIQSM MCQYLARVLV EDDEIMQGF I RAFPRLPRHL WYLLDLKQME EPCRF
<b>Predicted molecular weight</b>	21 kDa including tags
<b>Amino acids</b>	19 to 180
<b>Tags</b>	His tag N-Terminus

### Specifications

Our **Abpromise guarantee** covers the use of **ab140569** in the following tested applications.

The application notes include recommended starting dilutions; optimal dilutions/concentrations should be determined by the end user.

<b>Applications</b>	SDS-PAGE Mass Spectrometry
<b>Mass spectrometry</b>	MALDI-TOF
<b>Form</b>	Liquid
<b>Additional notes</b>	Previously labelled as Placental Protein 14 / Glycodelin A.

## Preparation and Storage

### Stability and Storage

Shipped at 4°C. Store at +4°C short term (1-2 weeks). Upon delivery aliquot. Store at -20°C or -80°C. Avoid freeze / thaw cycle.

pH: 8.00

Constituents: 0.02% DTT, 0.32% Tris HCl, 30% Glycerol (glycerin, glycerine), 0.88% Sodium chloride

## General Info

### Function

This protein is, quantitatively, the main protein synthesized and secreted in the endometrium from mid-luteal phase of the menstrual cycle and during the first semester of pregnancy.

### Sequence similarities

Belongs to the calycin superfamily. Lipocalin family.

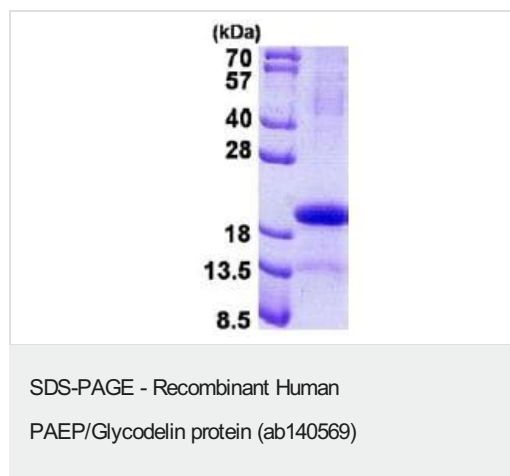
### Post-translational modifications

At least two differentially glycosylated forms are found. Glycodelin-A (GdA) (amniotic fluid) with contraceptive and immunosuppressive activities and glycodelin-S (Gds) (seminal plasma) whose role is not yet known. The gender-specific glycosylation may serve to regulate key process involved in human reproduction.

### Cellular localization

Secreted.

## Images



15% SDS PAGE analysis of ab140569 (3 µg).

**Please note:** All products are "FOR RESEARCH USE ONLY. NOT FOR USE IN DIAGNOSTIC PROCEDURES"

## Our Abpromise to you: Quality guaranteed and expert technical support

- Replacement or refund for products not performing as stated on the datasheet
- Valid for 12 months from date of delivery
- Response to your inquiry within 24 hours
- We provide support in Chinese, English, French, German, Japanese and Spanish
- Extensive multi-media technical resources to help you
- We investigate all quality concerns to ensure our products perform to the highest standards

If the product does not perform as described on this datasheet, we will offer a refund or replacement. For full details of the Abpromise, please visit <https://www.abcam.com/abpromise> or contact our technical team.

#### **Terms and conditions**

---

- Guarantee only valid for products bought direct from Abcam or one of our authorized distributors