

Product datasheet

Recombinant Human Papillary renal cell carcinoma protein ab159181

[1 Image](#)

Description

Product name	Recombinant Human Papillary renal cell carcinoma protein
Expression system	Wheat germ
Protein length	Full length protein
Animal free	No
Nature	Recombinant
Species	Human
Sequence	<pre>MSLVAYASSDESEPDEAEPEPEEEEEAVAPTSGPALGGLF ASLPAPKGPAL LPPPPQMLAPAFPPPLLLPPPTGDPRLQPPPPLPFGLGG FPPPPGVSPA AAGVGEGLGLLPSRGPGLNLPPPIGGAGPPLGLPKPK KRKEPVKIAAP ELHKGDSSEDEPTKKKTILQGSSEGTGLSALLPQPKNL TVKETNRLLL PHAFSRKPSDGPDTKPSRLASKTKTSSLAPVVGTTTTTP SPSAIKAAAK SAALQVTKQITQEEDDSDEEVAPENFFSLPEKAEPGVE PYPYIPTVPE ELPPGTEPEPAFQDDAANAPLEFKMAAGSSGAPWMPKP GDDYSYNQFSTY GDANAAGAYYQDYSGGYPAQDPALVPTQEIAPDASFID DEAFKRLQGK RNRGREEINFVEIKGDDQLSGAQQWMTKSLTEEKTMKSF SKKKGEQPTGQ QRRKHQITYLIHQAKERELELKNTWSENKLSRRQTQAKYG F</pre>
Amino acids	1 to 491
Tags	GST tag N-Terminus

Specifications

Our [Abpromise guarantee](#) covers the use of **ab159181** in the following tested applications.

The application notes include recommended starting dilutions; optimal dilutions/concentrations should be determined by the end user.

Applications	ELISA Western blot
Form	Liquid
Additional notes	

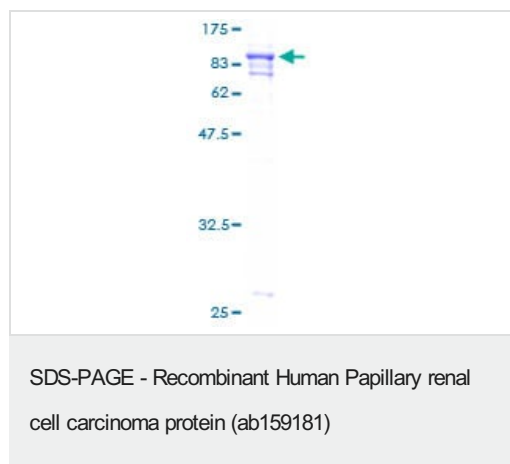
Preparation and Storage

Stability and Storage	Shipped on dry ice. Upon delivery aliquot and store at -80°C. Avoid freeze / thaw cycles. pH: 8.00 Constituents: 0.31% Glutathione, 0.79% Tris HCl
------------------------------	--

General Info

Function	May regulate cell cycle progression through interaction with MAD2L2.
Tissue specificity	Ubiquitous in fetal and adult tissues.
Involvement in disease	Note=A chromosomal aberration involving PRCC is found in patients with papillary renal cell carcinoma. Translocation t(X;1)(p11.2;q21.2) with TFE3.
Cellular localization	Nucleus.

Images



ab159181 on a 12.5% SDS-PAGE stained with Coomassie Blue.

Please note: All products are "FOR RESEARCH USE ONLY. NOT FOR USE IN DIAGNOSTIC PROCEDURES"

Our Abpromise to you: Quality guaranteed and expert technical support

- Replacement or refund for products not performing as stated on the datasheet
- Valid for 12 months from date of delivery
- Response to your inquiry within 24 hours

- We provide support in Chinese, English, French, German, Japanese and Spanish
- Extensive multi-media technical resources to help you
- We investigate all quality concerns to ensure our products perform to the highest standards

If the product does not perform as described on this datasheet, we will offer a refund or replacement. For full details of the Abpromise, please visit <https://www.abcam.com/abpromise> or contact our technical team.

Terms and conditions

- Guarantee only valid for products bought direct from Abcam or one of our authorized distributors