

Product datasheet

Recombinant human PARP9 protein ab79665

[2 References](#) [1 Image](#)

Description

Product name	Recombinant human PARP9 protein
Biological activity	Specific Activity: 196 U/mg.
Purity	> 80 % SDS-PAGE. Affinity purified.
Expression system	Baculovirus infected Sf9 cells
Protein length	Full length protein
Animal free	No
Nature	Recombinant
Species	Human

Specifications

Our **Abpromise guarantee** covers the use of **ab79665** in the following tested applications.

The application notes include recommended starting dilutions; optimal dilutions/concentrations should be determined by the end user.

Applications	SDS-PAGE Functional Studies
Form	Liquid

Preparation and Storage

Stability and Storage	Shipped on Dry Ice. Upon delivery aliquot. Store at -80°C. Avoid freeze / thaw cycle. pH: 8.00 Constituents: 0.0462% (R*,R*)-1,4-Dimercaptobutan-2,3-diol, 0.395% Tris HCl, 0.05% Tween, 50% Glycerol (glycerin, glycerine), 0.58% Sodium chloride This product is an active protein and may elicit a biological response in vivo, handle with caution.
------------------------------	--

General Info

Function	Involved in inducing the expression of IFN-gamma-responsive genes.
Tissue specificity	Expressed in lymphocyte-rich tissues, spleen, lymph nodes, peripheral blood lymphocytes and

colonic mucosa. Also expressed in nonhematopoietic tissues such as heart and skeletal muscle. Isoform 2 is the predominant form. Most abundantly expressed in lymphomas with a brisk host inflammatory response. In diffuse large B-cell lymphomas tumors, expressed specifically by malignant B-cells.

Involvement in disease

Note=Overexpressed at significantly higher levels in fatal high-risk diffuse large B-cell lymphomas (DLB-CL) compared to cured low-risk tumors. Overexpression in B-cell lymphoma transfectants may promote malignant B-cell migration. May therefore be involved in promoting B-cell migration and dissemination of high-risk DLB-CL tumors.

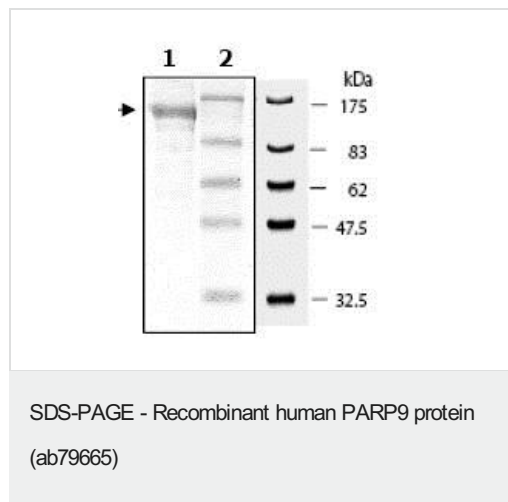
Sequence similarities

Contains 2 Macro domains.
Contains 1 PARP catalytic domain.

Cellular localization

Cytoplasm > cytosol. Nucleus. Shuttles between the nucleus and the cytosol. Export to the cytosol depends on the interaction with DTX3L.

Images



SDS-PAGE showing ab79665 at approximately 119kDa (4μg).

Please note: All products are "FOR RESEARCH USE ONLY. NOT FOR USE IN DIAGNOSTIC PROCEDURES"

Our Abpromise to you: Quality guaranteed and expert technical support

- Replacement or refund for products not performing as stated on the datasheet
- Valid for 12 months from date of delivery
- Response to your inquiry within 24 hours
- We provide support in Chinese, English, French, German, Japanese and Spanish
- Extensive multi-media technical resources to help you
- We investigate all quality concerns to ensure our products perform to the highest standards

If the product does not perform as described on this datasheet, we will offer a refund or replacement. For full details of the Abpromise, please visit <https://www.abcam.com/abpromise> or contact our technical team.

Terms and conditions

- Guarantee only valid for products bought direct from Abcam or one of our authorized distributors