

Recombinant Human PCOLCE protein (denatured)  
ab202191

1 Image

Description

Product name	Recombinant Human PCOLCE protein (denatured)		
Purity	> 85 % SDS-PAGE. ab202191 was purified using conventional chromatography techniques.		
Expression system	Escherichia coli		
Accession	<u>Q15113</u>		
Protein length	Full length protein		
Animal free	No		
Nature	Recombinant		
Species	Human		
Sequence	MGSSHHHHHHSSGLVPRGSHMGSTPNYTRPVFLCGGD VKGESGYVASEG FPNLYPPNKECIWTTVPEGQTVSLSFRVFDLELHPACRYD ALEVFAGSG TSGQRLGRFCGTFRPAPLVAPGNQVTLRMTTDEGTGGRG FLLWYSGRATS GTEHQFCGGRLEKAQGTLTTPNWPESDYPPGISCSWHIIA PPDQVIALTF EKFDLEPDTYCRYDSVSVFNGLAVSDDSRRLGKFCGDAV PGSISSEGNELL VQFVSDLSVTADGFSASYKTLPRGTAKGQGPGRGTE PKVKLPKPSQP PEKTEESPSAPDAPTCPKQCRRTGTLQSNFCASSLVVTA TVKSMVREPG GLAVTVSLIGAYKTGGDLPSPTGASLKFYVPCKQCPPM KKGVSYLLMG QVEENRGPVLPPEFVVLHRPNQDQILTNLSKRKCPSQP VRAAASQD		
Predicted molecular weight	48 kDa including tags		
Amino acids	26 to 449		
Tags	His tag N-Terminus		
Additional sequence information	This product is for the mature full length protein. The signal peptide is not included. NCBI		

Accession No. NP\_002584.

**Description** Recombinant Human PCOLCE protein

## Specifications

Our **Abpromise guarantee** covers the use of **ab202191** in the following tested applications.

The application notes include recommended starting dilutions; optimal dilutions/concentrations should be determined by the end user.

**Applications** SDS-PAGE

**Form** Liquid

## Preparation and Storage

**Stability and Storage** Shipped at 4°C. Store at +4°C short term (1-2 weeks). Upon delivery aliquot. Store at -20°C or -80°C. Avoid freeze / thaw cycle.

pH: 8.00

Constituents: 10% Glycerol (glycerin, glycerine), 0.32% Tris HCl

## General Info

**Function** Binds to the C-terminal propeptide of type I procollagen and enhances procollagen C-proteinase activity.

C-terminal processed part of PCPE (CT-PCPE) may have an metalloproteinase inhibitory activity.

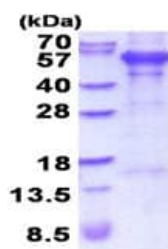
**Sequence similarities** Contains 2 CUB domains.

Contains 1 NTR domain.

**Post-translational modifications** C-terminally processed at multiple positions.

**Cellular localization** Secreted.

## Images



15% SDS-PAGE analysis of ab202191 (3 µg).

SDS-PAGE - Recombinant Human PCOLCE protein  
(denatured) (ab202191)

**Please note:** All products are "FOR RESEARCH USE ONLY. NOT FOR USE IN DIAGNOSTIC PROCEDURES"

### **Our Abpromise to you: Quality guaranteed and expert technical support**

---

- Replacement or refund for products not performing as stated on the datasheet
- Valid for 12 months from date of delivery
- Response to your inquiry within 24 hours
  
- We provide support in Chinese, English, French, German, Japanese and Spanish
- Extensive multi-media technical resources to help you
- We investigate all quality concerns to ensure our products perform to the highest standards

If the product does not perform as described on this datasheet, we will offer a refund or replacement. For full details of the Abpromise, please visit <https://www.abcam.com/abpromise> or contact our technical team.

### **Terms and conditions**

---

- Guarantee only valid for products bought direct from Abcam or one of our authorized distributors