

Product datasheet

Recombinant human PDE1C/PDE1 protein ab125567

2 Images

Description

Product name	Recombinant human PDE1C/PDE1 protein
Biological activity	The specific activity of ab125567 was determined to be 445 nmol/min/mg.
Purity	> 90 % Densitometry. Purity was determined to be >90% by densitometry.
Expression system	Baculovirus infected Sf9 cells
Accession	<u>Q14123</u>
Protein length	Full length protein
Animal free	No
Nature	Recombinant
Species	Human
Predicted molecular weight	99 kDa including tags
Amino acids	1 to 709

Specifications

Our **Abpromise guarantee** covers the use of **ab125567** in the following tested applications.

The application notes include recommended starting dilutions; optimal dilutions/concentrations should be determined by the end user.

Applications	Functional Studies SDS-PAGE
Form	Liquid
Additional notes	This product was previously labelled as PDE1C

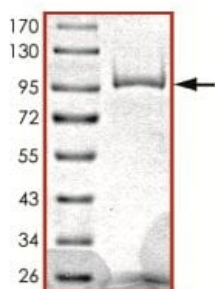
Preparation and Storage

Stability and Storage	Shipped on dry ice. Upon delivery aliquot and store at -80°C. Avoid freeze / thaw cycles. pH: 7.50 Constituents: 0.31% Glutathione, 0.002% PMSF, 0.004% DTT, 0.79% Tris HCl, 0.003% EDTA, 25% Glycerol (glycerin, glycerine), 0.88% Sodium chloride This product is an active protein and may elicit a biological response in vivo, handle with caution.
------------------------------	---

General Info

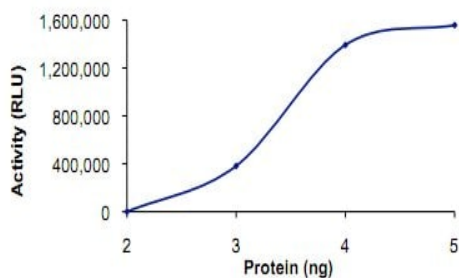
Function	Cyclic nucleotide phosphodiesterase with a dual-specificity for the second messengers cAMP and cGMP, which are key regulators of many important physiological processes. Has a high affinity for both cAMP and cGMP.
Tissue specificity	Expressed in several tissues, including brain and heart.
Sequence similarities	Belongs to the cyclic nucleotide phosphodiesterase family. PDE1 subfamily.

Images



SDS-PAGE analysis of ab125567.

SDS-PAGE - Recombinant human PDE1C/PDE1 protein (ab125567)



The specific activity of ab125567 was determined to be 445 nmol/min/mg.

Functional Studies - Recombinant human PDE1C/PDE1 protein (ab125567)

Please note: All products are "FOR RESEARCH USE ONLY. NOT FOR USE IN DIAGNOSTIC PROCEDURES"

Our Abpromise to you: Quality guaranteed and expert technical support

- Replacement or refund for products not performing as stated on the datasheet
- Valid for 12 months from date of delivery
- Response to your inquiry within 24 hours
- We provide support in Chinese, English, French, German, Japanese and Spanish

- Extensive multi-media technical resources to help you
- We investigate all quality concerns to ensure our products perform to the highest standards

If the product does not perform as described on this datasheet, we will offer a refund or replacement. For full details of the Abpromise, please visit <https://www.abcam.com/abpromise> or contact our technical team.

Terms and conditions

- Guarantee only valid for products bought direct from Abcam or one of our authorized distributors