

Product datasheet

Recombinant human PDGFR alpha (mutated D842Y) protein (Active) ab271686

[2 Images](#)

Description

Product name	Recombinant human PDGFR alpha (mutated D842Y) protein (Active)
Biological activity	Specific Activity: 153 pmole/min/μg.
Purity	>= 90 % SDS-PAGE. Affinity purified.
Expression system	Baculovirus infected Sf9 cells
Accession	<u>P16234</u>
Protein length	Protein fragment
Animal free	No
Nature	Recombinant
Species	Human
Predicted molecular weight	88 kDa
Amino acids	550 to 1089
Modifications	mutated D842Y
Tags	GST tag N-Terminus
Additional sequence information	Cytoplasmic domain.

Specifications

Our **Abpromise guarantee** covers the use of **ab271686** in the following tested applications.

The application notes include recommended starting dilutions; optimal dilutions/concentrations should be determined by the end user.

Applications	SDS-PAGE Functional Studies
Form	Liquid

Preparation and Storage

Stability and Storage	Shipped on Dry Ice. Store at -80°C. Avoid freeze / thaw cycle. pH: 8.00
------------------------------	--

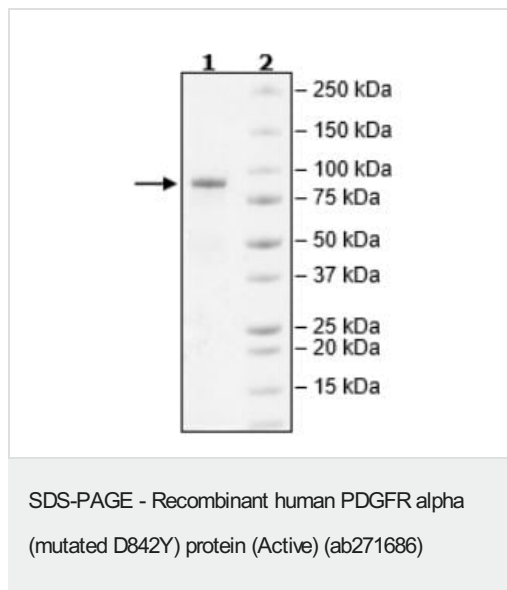
Constituents: 0.63% Tris HCl, 0.64% Sodium chloride, 0.02% Potassium chloride, 0.04% Tween, 0.05% (R*,R*)-1,4-Dimercaptobutan-2,3-diol, 20% Glycerol (glycerin, glycerine)

This product is an active protein and may elicit a biological response in vivo, handle with caution.

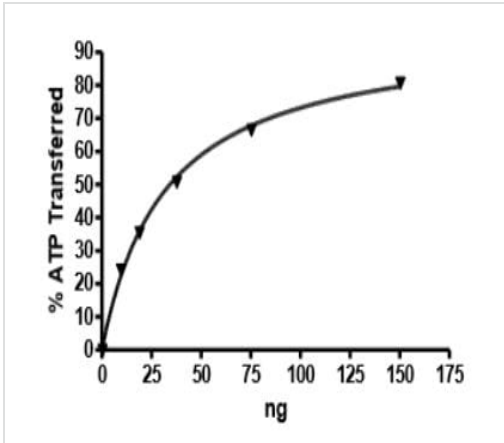
General Info

Function	Receptor that binds both PDGFA and PDGFB and has a tyrosine-protein kinase activity.
Tissue specificity	Expressed in primary and metastatic colon tumors and in normal colon tissue. Tumors may express a different isoform to that found in normal tissue.
Involvement in disease	Note=A chromosomal aberration involving PDGFRA is found in some cases of hypereosinophilic syndrome. Interstitial chromosomal deletion del(4)(q12q12) causes the fusion of FIP1L1 and PDGFRA (FIP1L1-PDGFR A).
Sequence similarities	Belongs to the protein kinase superfamily. Tyr protein kinase family. CSF-1/PDGF receptor subfamily. Contains 5 Ig-like C2-type (immunoglobulin-like) domains. Contains 1 protein kinase domain.
Cellular localization	Membrane.

Images



SDS-PAGE analysis of 2 µg ab271686.



Specific activity of ab271686 was 153 pmole/min/ μ g.

Functional Studies - Recombinant human PDGFR
alpha (mutated D842Y) protein (Active) (ab271686)

Please note: All products are "FOR RESEARCH USE ONLY. NOT FOR USE IN DIAGNOSTIC PROCEDURES"

Our Abpromise to you: Quality guaranteed and expert technical support

- Replacement or refund for products not performing as stated on the datasheet
- Valid for 12 months from date of delivery
- Response to your inquiry within 24 hours
- We provide support in Chinese, English, French, German, Japanese and Spanish
- Extensive multi-media technical resources to help you
- We investigate all quality concerns to ensure our products perform to the highest standards

If the product does not perform as described on this datasheet, we will offer a refund or replacement. For full details of the Abpromise, please visit <https://www.abcam.com/abpromise> or contact our technical team.

Terms and conditions

- Guarantee only valid for products bought direct from Abcam or one of our authorized distributors