

Product datasheet

Recombinant Human PHLPP2 protein ab125556

1 Image

Description

Product name	Recombinant Human PHLPP2 protein
Purity	> 95 % Densitometry. ab125556 is >95% pure.
Expression system	Escherichia coli
Accession	<u>Q6ZVD8</u>
Protein length	Protein fragment
Animal free	No
Nature	Recombinant
Species	Human
Predicted molecular weight	56 kDa including tags
Amino acids	766 to 1043

Specifications

Our **Abpromise guarantee** covers the use of **ab125556** in the following tested applications.

The application notes include recommended starting dilutions; optimal dilutions/concentrations should be determined by the end user.

Applications	Western blot SDS-PAGE
Form	Liquid

Preparation and Storage

Stability and Storage	Shipped on dry ice. Upon delivery aliquot and store at -80°C. Avoid freeze / thaw cycles. pH: 7.50 Constituents: 25% Glycerol (glycerin, glycerine), 0.88% Sodium chloride, 0.003% EDTA, 0.79% Tris HCl, 0.004% DTT, 0.002% PMSF, 0.31% Glutathione
------------------------------	---

General Info

Function	Protein phosphatase that mediates dephosphorylation of 'Ser-473' of AKT1, 'Ser-660' of PRKCB
-----------------	--

isoform beta-II and 'Ser-657' of PRKCA. AKT1 regulates the balance between cell survival and apoptosis through a cascade that primarily alters the function of transcription factors that regulate pro- and antiapoptotic genes. Dephosphorylation of 'Ser-473' of AKT1 triggers apoptosis and decreases cell proliferation. Also controls the phosphorylation of AKT3. Dephosphorylation of PRKCA and PRKCB leads to their destabilization and degradation. Inhibits cancer cell proliferation and may act as a tumor suppressor.

Tissue specificity

In colorectal cancer tissue, expression is highest in the surface epithelium of normal colonic mucosa adjacent to the cancer tissue but is largely excluded from the crypt bases. Expression is lost or significantly decreased in 80% of tested tumors (at protein level).

Sequence similarities

Contains 22 LRR (leucine-rich) repeats.

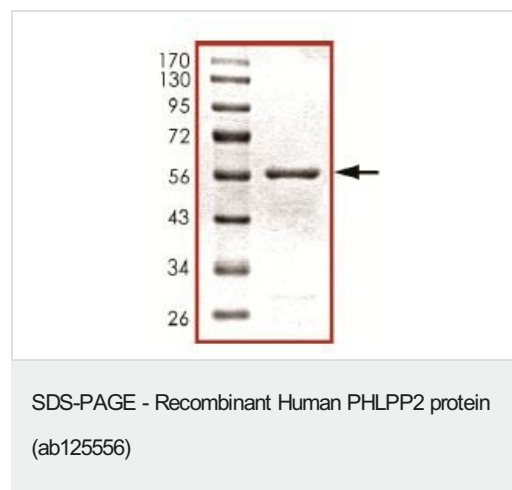
Contains 1 PH domain.

Contains 1 PP2C-like domain.

Cellular localization

Cytoplasm. Membrane. Nucleus. In colorectal cancer tissue, expression is concentrated in the cytoplasm and nucleus.

Images



SDS PAGE analysis of ab125556 (PHLPP2 protein).

Please note: All products are "FOR RESEARCH USE ONLY. NOT FOR USE IN DIAGNOSTIC PROCEDURES"

Our Abpromise to you: Quality guaranteed and expert technical support

- Replacement or refund for products not performing as stated on the datasheet
- Valid for 12 months from date of delivery
- Response to your inquiry within 24 hours
- We provide support in Chinese, English, French, German, Japanese and Spanish
- Extensive multi-media technical resources to help you
- We investigate all quality concerns to ensure our products perform to the highest standards

If the product does not perform as described on this datasheet, we will offer a refund or replacement. For full details of the Abpromise, please visit <https://www.abcam.com/abpromise> or contact our technical team.

Terms and conditions

- Guarantee only valid for products bought direct from Abcam or one of our authorized distributors