

## Product datasheet

# Recombinant Human Phospholipase C gamma 1/PLC-gamma-1 protein ab112339

[1 Image](#)

### Description

---

<b>Product name</b>	Recombinant Human Phospholipase C gamma 1/PLC-gamma-1 protein	
<b>Expression system</b>	Wheat germ	
<b>Accession</b>	<b><u>P19174-2</u></b>	
<b>Protein length</b>	Protein fragment	
<b>Animal free</b>	No	
<b>Nature</b>	Recombinant	
<b>Species</b>	Human	
<b>Sequence</b>	LKNNYSEDLELASLLIKIDIFPAKQENGDLSPFSGTSLRERG SDASGQLF HGRAREGSFESRYQQPFEDFRISQEHLADHFDSRERRAP RRTRVNGDNRL	
<b>Predicted molecular weight</b>	37 kDa including tags	
<b>Amino acids</b>	1192 to 1291	
<b>Tags</b>	GST tag N-Terminus	

### Specifications

---

Our **Abpromise guarantee** covers the use of **ab112339** in the following tested applications.

The application notes include recommended starting dilutions; optimal dilutions/concentrations should be determined by the end user.

<b>Applications</b>	SDS-PAGE ELISA Western blot
<b>Form</b>	Liquid
<b>Additional notes</b>	This product was previously labelled as Phospholipase C gamma 1

### Preparation and Storage

---

**Stability and Storage** Shipped on dry ice. Upon delivery aliquot and store at -80°C. Avoid freeze / thaw cycles.

pH: 8.00

Constituents: 0.31% Glutathione, 0.79% Tris HCl

## General Info

---

### Function

Plays a role in actin reorganization and cell migration. The production of the second messenger molecules diacylglycerol (DAG) and inositol 1,4,5-trisphosphate (IP3) is mediated by activated phosphatidylinositol-specific phospholipase C enzymes. Major substrate for heparin-binding growth factor 1 (acidic fibroblast growth factor)-activated tyrosine kinase.

### Sequence similarities

Contains 1 C2 domain.  
Contains 1 EF-hand domain.  
Contains 2 PH domains.  
Contains 1 PI-PLC X-box domain.  
Contains 1 PI-PLC Y-box domain.  
Contains 2 SH2 domains.  
Contains 1 SH3 domain.

### Domain

The SH3 domain mediates interaction with CLNK (By similarity). The SH3 domain also mediates interaction with RALGPS1.

### Post-translational modifications

The receptor-mediated activation of PLC-gamma-1 and PLC-gamma-2 involves their phosphorylation by tyrosine kinases in response to ligation of a variety of growth factor receptors and immune system receptors. May be dephosphorylated by PTPRJ. Ubiquitinated by CBLB in activated T-cells.

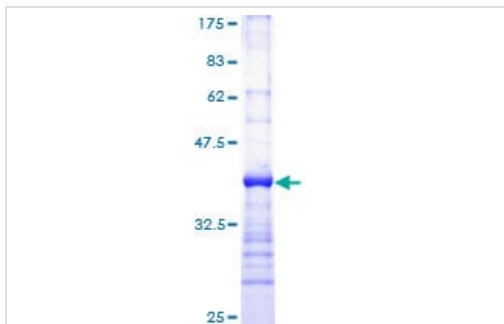
### Cellular localization

Cell projection > lamellipodium. Cell projection > ruffle. Rapidly redistributed to ruffles and lamellipodia structures in response to epidermal growth factor (EGF) treatment.

---

## Images

---



SDS-PAGE - Recombinant Human Phospholipase C gamma 1/PLC-gamma-1 protein (ab112339)

ab112339 analysed on a 12.5% SDS-PAGE gel stained with Coomassie Blue.

**Please note:** All products are "FOR RESEARCH USE ONLY. NOT FOR USE IN DIAGNOSTIC PROCEDURES"

## Our Abpromise to you: Quality guaranteed and expert technical support

---

- Replacement or refund for products not performing as stated on the datasheet

- Valid for 12 months from date of delivery
- Response to your inquiry within 24 hours
  
- We provide support in Chinese, English, French, German, Japanese and Spanish
- Extensive multi-media technical resources to help you
- We investigate all quality concerns to ensure our products perform to the highest standards

If the product does not perform as described on this datasheet, we will offer a refund or replacement. For full details of the Abpromise, please visit <https://www.abcam.com/abpromise> or contact our technical team.

### **Terms and conditions**

---

- Guarantee only valid for products bought direct from Abcam or one of our authorized distributors