

Recombinant Human PI-16 protein ab117229

1 Image

Description	
Product name	Recombinant Human PI-16 protein
Purity	> 90 % SDS-PAGE.
Endotoxin level	< 1.000 Eu/µg
Expression system	HEK 293 cells
Accession	Q6UXB8
Protein length	Protein fragment
Animal free	No
Nature	Recombinant
Species	Human
Sequence	LTDEEKRLMV ELHNLRYAQV SPPASDMLHM RWDEELAAFA KAYARQCVWG HNKERGRRGE NLFAITDEGM DVPLAMEEWH HEREHYNLSA ATCSPGQMCG HYTQVVWAKT ERIGCGSHFC EKLQGVETN IELLVCNYEP PGNVKGKRPY QEGTPCSQCP SGYHCKNSLC EPIGSPEDAQ DLPYLVTEAP SFRATEASDS RKMGTSSLA TGIPAFLVTE VSGSLATKAL PAVETQAPTS LATKDPPSMA TEAPPCVTTE VPSILAAHSL PSLDEEPTVF PKSTHVPIPK SADKVTDKTK VPSRSPENSL DPKMSLTGAR ELLPHAQEEA EAEAELPPSS EVLASVFPAQ DKPGELQATL DHTGHTSSKS LPNFPNTSAT ANATGGRALA LQSSLPGAEG PDKPSVVSGL NSGPAAADY KDDDDK
Predicted molecular weight	46 kDa including tags
Amino acids	28 to 442
Tags	DDDDK tag C-Terminus

Specifications

Our **Abpromise guarantee** covers the use of **ab117229** in the following tested applications.

The application notes include recommended starting dilutions; optimal dilutions/concentrations should be determined by the end user.

Applications	Western blot ELISA
Form	Lyophilized
Additional notes	Previously labelled as Peptidase inhibitor 16.

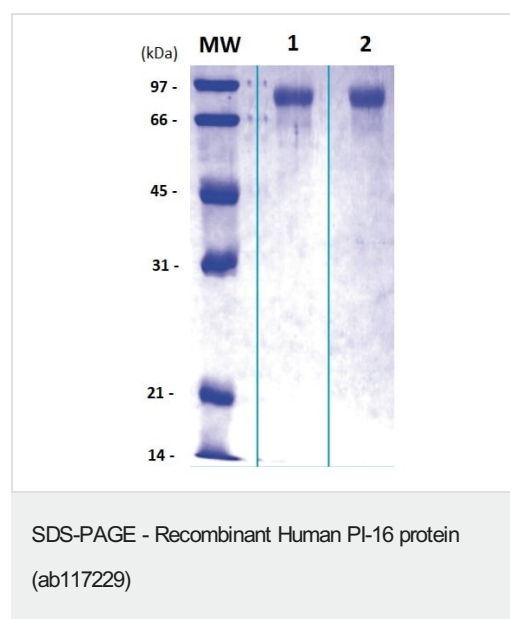
Preparation and Storage

Stability and Storage	Shipped at 4°C. Store at +4°C short term (1-2 weeks). Upon delivery aliquot. Store at -80°C. Avoid freeze / thaw cycle. pH: 7.50 Constituents: 0.29% Sodium chloride, 0.24% Tris
Reconstitution	Add deionized water to prepare a working stock solution of 0.5 mg/mL and let the lyophilized pellet dissolve completely. Product is not sterile! Please filter the product by an appropriate sterile filter before using it in the cell culture.

General Info

Function	Putative serine protease inhibitor.
Tissue specificity	Expressed in prostate, testis, ovary and intestine. Concentrates in prostate cancer patient's sera.
Sequence similarities	Belongs to the CRISP family.
Post-translational modifications	N-glycosylated.
Cellular localization	Membrane.

Images



12% SDS-PAGE separation of Human Peptidase inhibitor 16

Lane 1: Reduced and boiled sample (5 µg).

Lane 2: Non-reduced and non-boiled sample (5 µg).

Please note: All products are "FOR RESEARCH USE ONLY. NOT FOR USE IN DIAGNOSTIC PROCEDURES"

Our Abpromise to you: Quality guaranteed and expert technical support

- Replacement or refund for products not performing as stated on the datasheet
- Valid for 12 months from date of delivery
- Response to your inquiry within 24 hours

- We provide support in Chinese, English, French, German, Japanese and Spanish
- Extensive multi-media technical resources to help you
- We investigate all quality concerns to ensure our products perform to the highest standards

If the product does not perform as described on this datasheet, we will offer a refund or replacement. For full details of the Abpromise, please visit <https://www.abcam.com/abpromise> or contact our technical team.

Terms and conditions

- Guarantee only valid for products bought direct from Abcam or one of our authorized distributors