

Product datasheet

Recombinant Human Plastin L protein (His tag) ab241232

[1 Image](#)

Description

Product name Recombinant Human Plastin L protein (His tag)

Purity > 90 % SDS-PAGE.

Expression system Yeast

Accession **P13796**

Protein length Full length protein

Animal free No

Nature Recombinant

Species Human

Sequence

```
ARGSVSDEEMMELREAFKVDTDGNGYISFNELNDLFKA
ACLPLPGYRVR
EITENLMATGDLDQDGRISFDEFIKIFHGLKSTDVAKTFRKA
INKKEGIC
AIGGTSEQSSVGTQHSYSEEEKYAFVNWINKALENDPDCR
HVIPMNPNTN
DLFNAVGDGMVLCCKMINLSVPDTIDERTINKKCLTPFTIQENL
NLALNSA
SAIGCHVVNIGAEDLKEGKPYLVGLLWQVIKIGLFADIELS
RNEALIAL
LREGESLEDLMKLSPEELLLRWANYHLENAGCNKIGNFST
DIKDSKAYYH
LLEQVAPKGDDEEGVPAVVIDMSGLREKDDIQRAECMLQQ
AERLGCRQFVT
ATDVVRGNPKLNLAFLANLFNRYPALHKPENQDIDWGALE
GETREERTFR
NWMNSLGVNPRVNHLYSDLSDALVIFQLYEKIKVPVDWNR
VNKPPYPKLG
GNMKKLENCNYAVELGKNQAKFSLVGIGGQDLNEGNRTL
TLALWQLMRR
YTLNILEEIGGGQKVNDIIVNWNVNETLREAKKSSSISSEFKD
PKISTSLP
VLDLIDAIQPGSINYDLLKTENLNDDEKLNNAKYAISMARKIG
ARVYALP EDLVEVNPKMVMTVFACLMGKGMKRV
```

Predicted molecular weight	72 kDa including tags
Amino acids	2 to 627
Tags	His tag N-Terminus
Additional sequence information	N-terminal 6xHis-tagged

Specifications

Our **Abpromise guarantee** covers the use of **ab241232** in the following tested applications.

The application notes include recommended starting dilutions; optimal dilutions/concentrations should be determined by the end user.

Applications	SDS-PAGE
Form	Liquid

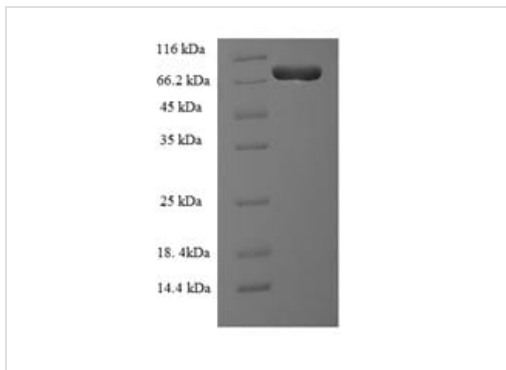
Preparation and Storage

Stability and Storage	Shipped at 4°C. Store at -20°C or -80°C. Avoid freeze / thaw cycle. pH: 7.20 Constituents: Tris buffer, 50% Glycerol (glycerin, glycerine)
------------------------------	--

General Info

Function	Actin-binding protein. Plays a role in the activation of T-cells in response to costimulation through TCR/CD3 and CD2 or CD28. Modulates the cell surface expression of IL2RA/CD25 and CD69.
Tissue specificity	Detected in intestinal microvilli, hair cell stereocilia, and fibroblast filopodia, in spleen and other lymph node-containing organs. Expressed in peripheral blood T lymphocytes, neutrophils, monocytes, B lymphocytes, and myeloid cells.
Sequence similarities	Contains 2 actin-binding domains. Contains 4 CH (calponin-homology) domains. Contains 2 EF-hand domains.
Post-translational modifications	Phosphorylated on a serine residue in response to costimulation through TCR/CD3 and CD2 or CD28. Serine phosphorylation promotes association with the actin cytoskeleton and targeting to peripheral cell projections. The N-terminus is blocked.
Cellular localization	Cytoplasm > cytoskeleton. Cell junction. Cell projection. Cell projection > ruffle membrane. Relocalizes to the immunological synapse between peripheral blood T lymphocytes and antibody-presenting cells in response to costimulation through TCR/CD3 and CD2 or CD28. Associated with the actin cytoskeleton at membrane ruffles (By similarity). Relocalizes to actin-rich cell projections upon serine phosphorylation.

Images



SDS-PAGE - Recombinant Human Plastin L protein
(His tag) (ab241232)

ab241232 analyzed by (Tris-Glycine gel) Discontinuous SDS-PAGE (reduced) with 5% enrichment gel and 15% separation gel.

Please note: All products are "FOR RESEARCH USE ONLY. NOT FOR USE IN DIAGNOSTIC PROCEDURES"

Our Abpromise to you: Quality guaranteed and expert technical support

- Replacement or refund for products not performing as stated on the datasheet
- Valid for 12 months from date of delivery
- Response to your inquiry within 24 hours
- We provide support in Chinese, English, French, German, Japanese and Spanish
- Extensive multi-media technical resources to help you
- We investigate all quality concerns to ensure our products perform to the highest standards

If the product does not perform as described on this datasheet, we will offer a refund or replacement. For full details of the Abpromise, please visit <https://www.abcam.com/abpromise> or contact our technical team.

Terms and conditions

- Guarantee only valid for products bought direct from Abcam or one of our authorized distributors