

Product datasheet

Recombinant Human PLD2 protein ab159137

1 Image

Description

Product name	Recombinant Human PLD2 protein
Expression system	Wheat germ
Protein length	Full length protein
Animal free	No
Nature	Recombinant
Species	Human

Sequence

MTATPESLFPTGDELDSSQLQMESDEVDTLKEGEDPAD
RMHPFLAYELQ
SLKVHPLVFAPGVPVTAQVVGTERYTSKSKVGTCTLYSVR
LTHGDFSOTT
KKKYRHFQELHRDLLRHKVLMSLLPLARFAVAYSPARDA
GNREMPSLPRA
GPEGSTRHAASKQKYLENYLNCLLTMSFYRNYHAMTEFLE
VSQLSFIPDL
GRKGLEGMIRKRSGGHRVPGLTCCGRDQVCYRWSKRWL
VVKDSFLLYMCL
ETGAISFVQLFDPGFVQVQVGRSTEARHGVRIDTSHRSLIL
KCSSYRQAR
WVAQEITELAQQPGRDFLQLHRHDSYAPPRPGTLARWFV
NGAGYFAAVAD
AILRAQEEIFITDWWLSPEVYLKRPASDDWRLDIMLKRKA
EEGVRVSIL
LFKEVELALGINSYKRALMLLHPNIKVMRHPDQVTLWA
HHEKLLVVDQ
VVAFLGGLDLAYGRWDDLHYRLTDLGDSSESAASQPPTP
RPDSPATPDLS
HNQFFWLKGDYSLITKDWVQLDRPFEDFIDRETTPRMP
WRDVGVVVHGL
PARDLARHFQIRWNFTKTTKAKYKTPYPLPKSTSTANQL
PFTLPGGQ
CTTVQVLRSDRWSAGTLENSILNAYLHTIRESQHFLYIENQ
FFISCSHG
RTVLNKGDEIVDRILKAHKQGWYRYYVLLPLLPGFEGDI
STGGGNSIQ
AILHFTYRTLGRGEYSILHRLKAAMGTAWRDYISICGLRTHG

ELGGHPVS
ELMHSKVLIAADDRTVIIGSANINDRSLGKRDSSELAVLIEDT
ETEPSL
MNGAEYQAGRFALSLRKHCFCVILGANTRPDLDLRDPICD
DFFQLWQDMA
ESNANIYEQIFRCLPSNATRSLRTLREYWAVEPLATVSPPL
ARSELTQVQ
GHLVHFPLKFLEDESLLPPLGSKEGMIPLEVWT

Amino acids 1 to 933
Tags GST tag N-Terminus

Specifications

Our **Abpromise guarantee** covers the use of **ab159137** in the following tested applications.

The application notes include recommended starting dilutions; optimal dilutions/concentrations should be determined by the end user.

Applications Western blot
ELISA
Form Liquid

Additional notes

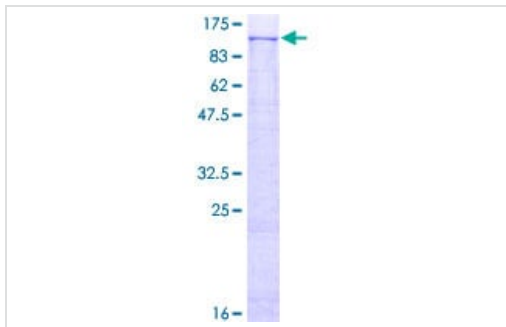
Preparation and Storage

Stability and Storage Shipped on dry ice. Upon delivery aliquot and store at -80°C. Avoid freeze / thaw cycles.
pH: 8.00
Constituents: 0.31% Glutathione, 0.79% Tris HCl

General Info

Function May have a role in signal-induced cytoskeletal regulation and/or endocytosis.
Tissue specificity Ubiquitous.
Sequence similarities Belongs to the phospholipase D family.
Contains 1 PH domain.
Contains 2 PLD phosphodiesterase domains.
Contains 1 PX (phox homology) domain.
Cellular localization Membrane.

Images



ab159137 on a 12.5% SDS-PAGE stained with Coomassie Blue.

SDS-PAGE - Recombinant Human PLD2 protein
(ab159137)

Please note: All products are "FOR RESEARCH USE ONLY. NOT FOR USE IN DIAGNOSTIC PROCEDURES"

Our Abpromise to you: Quality guaranteed and expert technical support

- Replacement or refund for products not performing as stated on the datasheet
- Valid for 12 months from date of delivery
- Response to your inquiry within 24 hours
- We provide support in Chinese, English, French, German, Japanese and Spanish
- Extensive multi-media technical resources to help you
- We investigate all quality concerns to ensure our products perform to the highest standards

If the product does not perform as described on this datasheet, we will offer a refund or replacement. For full details of the Abpromise, please visit <https://www.abcam.com/abpromise> or contact our technical team.

Terms and conditions

- Guarantee only valid for products bought direct from Abcam or one of our authorized distributors