

## Product datasheet

# Recombinant Human Plexin B2/MM1 protein ab132461

1 Image

### Description

<b>Product name</b>	Recombinant Human Plexin B2/MM1 protein	
<b>Expression system</b>	Wheat germ	
<b>Accession</b>	<b><u>O15031</u></b>	
<b>Protein length</b>	Protein fragment	
<b>Animal free</b>	No	
<b>Nature</b>	Recombinant	
<b>Species</b>	Human	
<b>Sequence</b>	<p>MHTLFLELLEQYVVAKNPKLMLRRSETVVERMLSNWMSIC  LYQYLKDSAG  EPLYKLFKAIKHQVEKGPVDAVQKKAKYTLNDTGLLGDDV  EYAPLTVSVI  VQDEGVDAIPVKVLNCDTISQVKEKIIDQVYRGQPCSCWP  RPDSVVLEWR  PGSTAQILSDLDLTSQQEGRWKRVTNLMHYNVRDGATLIL  SKVGVSQQPE  DSQQDLPGERHALLEEENRVWHLVRPTDEVDEGKSKRG  SVKEKERTKAIT  EMLTRLLSVKGTLQQFVDNFFQSVLAPGHAVPPAVKYFF  DFLDEQAEKH  NIQDEDTIHWKTNLPLRFWVNILKNPHFIFDVHVHEVVDA  SLSVIAQT  FMDACTRTEHKLSRDSPSNKLLYAKEISTYKMMVEDYYKGI  RQMVQVSDQ  DMNTHLAEISRAHTDSLNTLVALHQLYQYTKQYDEIINALE  EDPAAQKMQLAFRLQQIAAALENKVTDL</p>	
<b>Predicted molecular weight</b>	77 kDa including tags	
<b>Amino acids</b>	1369 to 1838	
<b>Tags</b>	GST tag N-Terminus	

### Specifications

Our **Abpromise guarantee** covers the use of **ab132461** in the following tested applications.

The application notes include recommended starting dilutions; optimal dilutions/concentrations should be determined by the end user.

<b>Applications</b>	SDS-PAGE ELISA Western blot
<b>Form</b>	Liquid
<b>Additional notes</b>	This product was previously labelled as Plexin B2.

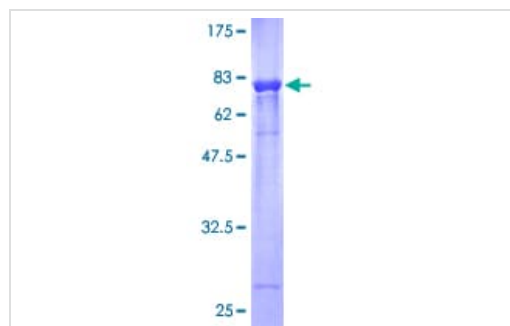
## Preparation and Storage

<b>Stability and Storage</b>	Shipped on dry ice. Upon delivery aliquot and store at -80°C. Avoid freeze / thaw cycles. pH: 8.00 Constituents: 0.79% Tris HCl, 0.31% Glutathione
------------------------------	--

## General Info

<b>Relevance</b>	Plexin B2/MM1 is a transmembrane receptor for the class 4 semaphorin, SEMA4D. This receptor has key roles in RHOA activation and subsequent changes of the actin cytoskeleton, axon guidance, invasive growth and cell migration.
<b>Cellular localization</b>	Membrane; single-pass type I membrane protein.

## Images



SDS-PAGE analysis of ab132461 on a 12.5% gel stained with Coomassie Blue.

SDS-PAGE - Recombinant Human Plexin B2/MM1 protein (ab132461)

**Please note:** All products are "FOR RESEARCH USE ONLY. NOT FOR USE IN DIAGNOSTIC PROCEDURES"

## Our Abpromise to you: Quality guaranteed and expert technical support

- Replacement or refund for products not performing as stated on the datasheet
- Valid for 12 months from date of delivery
- Response to your inquiry within 24 hours
- We provide support in Chinese, English, French, German, Japanese and Spanish

- Extensive multi-media technical resources to help you
- We investigate all quality concerns to ensure our products perform to the highest standards

If the product does not perform as described on this datasheet, we will offer a refund or replacement. For full details of the Abpromise, please visit <https://www.abcam.com/abpromise> or contact our technical team.

### **Terms and conditions**

---

- Guarantee only valid for products bought direct from Abcam or one of our authorized distributors