

Product datasheet

Recombinant Human POGLUT1 protein (His tag) ab219279

1 Image

Description

Product name	Recombinant Human POGLUT1 protein (His tag)
Purity	> 90 % SDS-PAGE. Affinity purified
Endotoxin level	< 1.000 Eu/μg
Expression system	Baculovirus infected insect cells
Accession	<u>Q8NBL1</u>
Protein length	Full length protein
Animal free	No
Nature	Recombinant
Species	Human
Sequence	RQKESGSKWK VFIDQINRSL ENYEPCCSSQN CSCYHGVIEE DLTPFRGGIS RKMMAEVVRR KLGTHYQITK NRLYRENDPCM FPSRCSGVEH FILEVIGRLP DMEMVINVRD YPQVPKWMEP AIPVFSFSKT SEYHDIMYPA WTFWEGGPAV WPIYPTGLGR WDLFREDLVR SAAQWPWKKK NSTAYFRGSR TSPERDPLIL LSRKNPKLVD AEYTKNQAWK SMKDTLGKPA AKDVHLVDHC KYKYLNFNFRG VAASFRFKHL FLCGSLVFHV GDEWLEFFYP QLKPWVHYP VKTDLSNVQE LLQFVKANDD VAQEIAERGS QFIRNHLQMD DITCYWENLL SEYSKFLSYN VTRRKGVDQI IPKMLKTELL EHHHHHH
Predicted molecular weight	45 kDa including tags
Amino acids	24 to 392
Tags	His tag C-Terminus
Additional sequence information	Corresponding to the mature protein without initial signal peptide.

Specifications

Our **Abpromise guarantee** covers the use of **ab219279** in the following tested applications.

The application notes include recommended starting dilutions; optimal dilutions/concentrations should be determined by the end user.

Applications	SDS-PAGE
Form	Liquid
Additional notes	Previously labelled as KTEL1.

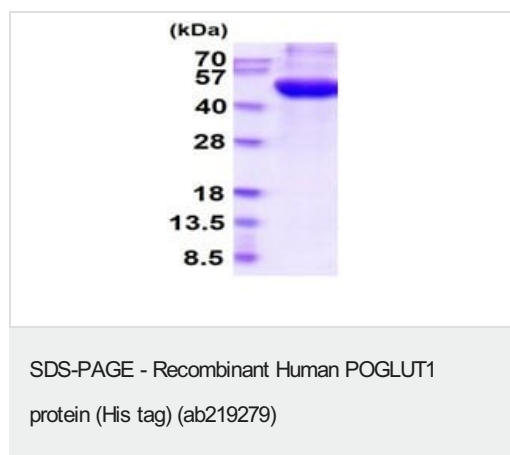
Preparation and Storage

Stability and Storage	Shipped at 4°C. Store at +4°C short term (1-2 weeks). Upon delivery aliquot. Store at -20°C or -80°C. Avoid freeze / thaw cycle. pH: 7.40 Constituents: 90% PBS, 10% Glycerol (glycerin, glycerine)
------------------------------	---

General Info

Function	Dual specificity glycosyltransferase. Catalyzes the transfer of glucose and xylose from UDP-glucose and UDP-xylose, respectively, to EGF repeats, such as those found in F7, F9 and NOTCH2, on the consensus sequence C-X-S-X-P-C. Positively regulates Notch signaling without affecting Notch ligand binding.
Tissue specificity	Expressed in most adult tissues at different intensities. Abundantly expressed in liver. Expressed also in brain, heart, skeletal muscle, spleen, kidney, placenta, lung and peripheral blood leukocyte. Not detectable in colon, thymus and small intestine. Expressed in the epidermis, especially in the upper parts, stratum spinosum and stratum granulosum (at protein level).
Pathway	Protein modification; protein glycosylation.
Involvement in disease	Dowling-Degos disease 4
Sequence similarities	Belongs to the glycosyltransferase 90 family.
Cellular localization	Endoplasmic reticulum lumen.

Images



15% SDS-PAGE - Recombinant Human POGLUT1 protein (His tag) (ab219279) at 3 µg.

Please note: All products are "FOR RESEARCH USE ONLY. NOT FOR USE IN DIAGNOSTIC PROCEDURES"

Our Abpromise to you: Quality guaranteed and expert technical support

- Replacement or refund for products not performing as stated on the datasheet
- Valid for 12 months from date of delivery
- Response to your inquiry within 24 hours

- We provide support in Chinese, English, French, German, Japanese and Spanish
- Extensive multi-media technical resources to help you
- We investigate all quality concerns to ensure our products perform to the highest standards

If the product does not perform as described on this datasheet, we will offer a refund or replacement. For full details of the Abpromise, please visit <https://www.abcam.com/abpromise> or contact our technical team.

Terms and conditions

- Guarantee only valid for products bought direct from Abcam or one of our authorized distributors