

## Product datasheet

# Recombinant Human PP2A-alpha protein (Tagged) ab114424

1 Image

### Description

<b>Product name</b>	Recombinant Human PP2A-alpha protein (Tagged)	
<b>Expression system</b>	Wheat germ	
<b>Accession</b>	<b><u>P67775</u></b>	
<b>Protein length</b>	Full length protein	
<b>Animal free</b>	No	
<b>Nature</b>	Recombinant	
<b>Species</b>	Human	
<b>Sequence</b>	<p>MDEKVFTEKELDQWIEQLNECKQLSESQVKSLECAKEILT          KESNVQEVRC          PVTVCGDVHGQFHDLMELEFRIGGKSPDTNYLFMGDYVDR          GYYSVETVLL          VALKVRYRERITILRGNHESRQITQVYGFYDECLRKYGNAN          VWKYFTDLF          DYLPALTALVDGQIFCLHGGLSPSIDTLDIRALDRLQEVPH          EGPMCDLLW          SDPDDRGGWGISPRGAGYTFGQDISETFNHANGLTLVSR          AHQLVMEGYNW          CHDRNVVTIFSAPNYCYRCGNQAAIMELDDTLKYSFLQFD          PAPRRGEPHV TRRTPDYFL</p>	
<b>Predicted molecular weight</b>	60 kDa including tags	
<b>Amino acids</b>	1 to 309	
<b>Tags</b>	GST tag N-Terminus	

### Specifications

Our **Abpromise guarantee** covers the use of **ab114424** in the following tested applications.

The application notes include recommended starting dilutions; optimal dilutions/concentrations should be determined by the end user.

<b>Applications</b>	ELISA
	Western blot
	SDS-PAGE

**Form** Liquid

## Preparation and Storage

**Stability and Storage** Shipped on dry ice. Upon delivery aliquot and store at -80°C. Avoid freeze / thaw cycles.  
pH: 8.00  
Constituents: 0.3% Glutathione, 0.79% Tris HCl

## General Info

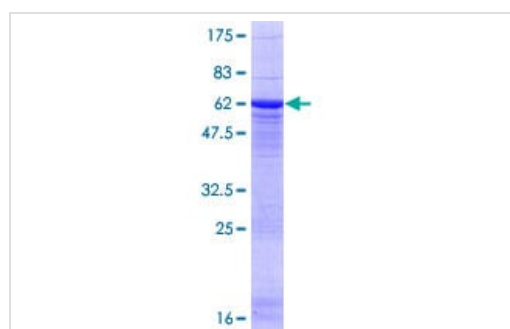
**Function** PP2A can modulate the activity of phosphorylase B kinase casein kinase 2, mitogen-stimulated S6 kinase, and MAP-2 kinase. Cooperates with SGOL2 to protect centromeric cohesin from separase-mediated cleavage in oocytes specifically during meiosis I (By similarity). Can dephosphorylate SV40 large T antigen and p53/TP53. Dephosphorylates SV40 large T antigen, preferentially on serine residues 120, 123, 677, and perhaps 679. The C subunit was most active, followed by the AC form, which was more active than the ABC form, and activity of all three forms was strongly stimulated by manganese, and to a lesser extent by magnesium. Dephosphorylation by the AC form, but not C or ABC form is inhibited by small T antigen.

**Sequence similarities** Belongs to the PPP phosphatase family. PP-1 subfamily.

**Post-translational modifications** Reversibly methyl esterified on Leu-309. Carboxyl methylation may play a role in holoenzyme assembly. It varies during the cell cycle. Phosphorylation of either threonine (by autophosphorylation-activated protein kinase) or tyrosine results in inactivation of the phosphatase. Auto-dephosphorylation has been suggested as a mechanism for reactivation.

**Cellular localization** Cytoplasm. Nucleus. Chromosome > centromere. Cytoplasm > cytoskeleton > spindle pole. In prometaphase cells, but not in anaphase cells, localizes at centromeres. During mitosis, also found at spindle poles. Centromeric localization requires the presence of SGOL2.

## Images



SDS-PAGE - Recombinant Human PP2A-alpha protein (ab114424)

ab114424 analysed on a 12.5% SDS-PAGE gel stained with Coomassie Blue.

**Please note:** All products are "FOR RESEARCH USE ONLY. NOT FOR USE IN DIAGNOSTIC PROCEDURES"

## **Our Abpromise to you: Quality guaranteed and expert technical support**

---

- Replacement or refund for products not performing as stated on the datasheet
- Valid for 12 months from date of delivery
- Response to your inquiry within 24 hours
  
- We provide support in Chinese, English, French, German, Japanese and Spanish
- Extensive multi-media technical resources to help you
- We investigate all quality concerns to ensure our products perform to the highest standards

If the product does not perform as described on this datasheet, we will offer a refund or replacement. For full details of the Abpromise, please visit <https://www.abcam.com/abpromise> or contact our technical team.

## **Terms and conditions**

---

- Guarantee only valid for products bought direct from Abcam or one of our authorized distributors