

Recombinant Human PPP2R5A protein ab159173

1 Image

Description	
Product name	Recombinant Human PPP2R5A protein
Expression system	Wheat germ
Protein length	Full length protein
Animal free	No
Nature	Recombinant
Species	Human
Sequence	MSSSSPPAGAASAAISASEKVDGFTRKSVRKAQRQKRS QGSSQFRSQGSQ AELHPLPQLKDATSNEQQELFCQKLQCCILFDFMDSVS DLKSKEIKRAT LNELVEYVSTNRGVIVESAYSDMKMSANIFRTLPPSDNPD FDPEEDEP TLEASWPHIQLVYEFFLRFLESPDFQPSIAKRYIDQKFVQQ LLELFDSED PRERDFLKTVLHRIYGKFLGLRAFIRKQINNIFLRFIYETEHN GVAELL EILGSIINGFALPLKAEHKQFLMKVLIPMHTAKGLALFHAQL AYCVVQFL EKDTTLTEPVIRGLLKFWPKTCSQKEVMFLGIEEILDVIEP TQFKKIEE PLFKQISKCVSSSHFQVAERALYFWNNEYILSLIEENIDKILP IMFASLY KISKEHWNPTIVALVYNVLKTLMEMNGKLFDDLTSSYKAER QREKKKELE REELWKKLEELKLKKALEKQNSAYNMHSILSNTSAE
Amino acids	1 to 486
Tags	GST tag N-Terminus

Specifications	
Our Abpromise guarantee covers the use of ab159173 in the following tested applications.	
The application notes include recommended starting dilutions; optimal dilutions/concentrations should be determined by the end user.	
Applications	ELISA

	Western blot
Form	Liquid
Additional notes	

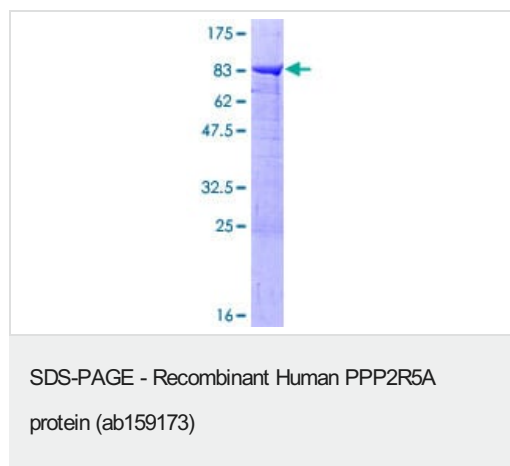
Preparation and Storage

Stability and Storage	Shipped on dry ice. Upon delivery aliquot and store at -80°C. Avoid freeze / thaw cycles. pH: 8.00 Constituents: 0.31% Glutathione, 0.79% Tris HCl
------------------------------	--

General Info

Function	The B regulatory subunit might modulate substrate selectivity and catalytic activity, and also might direct the localization of the catalytic enzyme to a particular subcellular compartment.
Tissue specificity	Widely expressed with the highest expression in heart and skeletal muscle.
Sequence similarities	Belongs to the phosphatase 2A regulatory subunit B56 family.
Post-translational modifications	Phosphorylated on serine residues.
Cellular localization	Cytoplasm. Nucleus. Chromosome > centromere. From mitotic prophase to metaphase, localizes at the inner centromere between a pair of sister kinetochores. Decreased expression at the onset of anaphase.

Images



ab159173 on a 12.5% SDS-PAGE stained with Coomassie Blue.

Please note: All products are "FOR RESEARCH USE ONLY. NOT FOR USE IN DIAGNOSTIC PROCEDURES"

Our Abpromise to you: Quality guaranteed and expert technical support

- Replacement or refund for products not performing as stated on the datasheet

- Valid for 12 months from date of delivery
- Response to your inquiry within 24 hours
- We provide support in Chinese, English, French, German, Japanese and Spanish
- Extensive multi-media technical resources to help you
- We investigate all quality concerns to ensure our products perform to the highest standards

If the product does not perform as described on this datasheet, we will offer a refund or replacement. For full details of the Abpromise, please visit <https://www.abcam.com/abpromise> or contact our technical team.

Terms and conditions

- Guarantee only valid for products bought direct from Abcam or one of our authorized distributors