

## Product datasheet

# Recombinant Human PPP2R5D protein ab114547

[1 Image](#)

### Description

---

**Product name** Recombinant Human PPP2R5D protein

**Expression system** Wheat germ

**Accession** **Q14738**

**Protein length** Full length protein

**Animal free** No

**Nature** Recombinant

**Species** Human

**Sequence**

```
MPYKLLKKEKEPPKVAKCTAKPSSSGKDGGGENTEEAQP
QPQPQPQQAQS
QPPSSNKRPSNSTPPPTQLSKIKYSGGPQMKKERRQSSS
RFNLSKNREL
QKLPALKDSPTQEREELFIQKLRQCCVLFDFVSDPLSDLK
FKEVKRAGLN
EMVEYITHSRDVVTEAYPEAVTMFSVNLFRTPPSSNPTG
AEFDPEEDE
PTLEAAWPHLQLVYEFFLRFLESPDFQPNIKKYIDQKFVL
ALLDLFDSE
DPRERDFLKTILHRIYGKFLGLRAYIRRQINHIFRYFETEHH
NGIAEL
LEILGSIINGFALPLKEEHKMFLIRVLLPLHKVKSLSVYHPQL
AYCVVQF
LEKESLTPVIVGLLKFWPKTHSPKEVMFLNELEEILDVI
EPSEFSKVM
EPLFRQLAKCVSSPHFQVAERALYYWNNEYIMSLISDNAA
RVLPIMFPAL
YRNSKSHWNKTIHGLYNALKLFMEMNQKLFDDCTQQYKA
EKQKGRFRMK
EREEMWQKIEELARLNPQYPMFRAPPPLPPVYSMETETP
TAEDIQLLKRT
VETEAVQMLKDIKKEKVVLLRRKSELPQDVYTIKALEAHKRA
EEFLTASQEAL
```

**Predicted molecular weight** 92 kDa including tags

**Amino acids** 1 to 602

**Tags** GST tag N-Terminus

## Specifications

---

Our **Abpromise guarantee** covers the use of **ab114547** in the following tested applications.

The application notes include recommended starting dilutions; optimal dilutions/concentrations should be determined by the end user.

<b>Applications</b>	ELISA Western blot SDS-PAGE
<b>Form</b>	Liquid

## Preparation and Storage

---

<b>Stability and Storage</b>	Shipped on dry ice. Upon delivery aliquot and store at -80°C. Avoid freeze / thaw cycles. pH: 8.00 Constituents: 0.3% Glutathione, 0.79% Tris HCl
------------------------------	---

## General Info

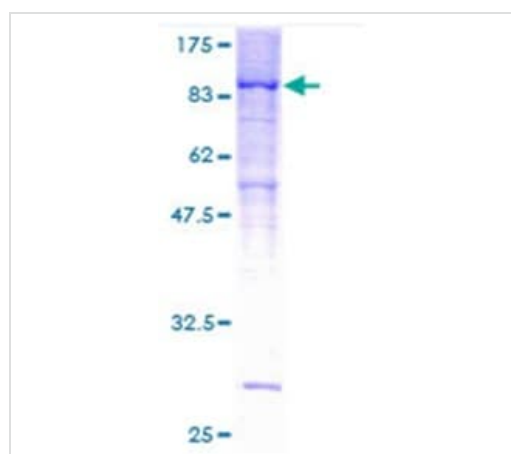
---

<b>Function</b>	The B regulatory subunit might modulate substrate selectivity and catalytic activity, and also might direct the localization of the catalytic enzyme to a particular subcellular compartment.
<b>Tissue specificity</b>	Isoform Delta-2 is widely expressed. Isoform Delta-1 is highly expressed in brain.
<b>Sequence similarities</b>	Belongs to the phosphatase 2A regulatory subunit B56 family.
<b>Cellular localization</b>	Cytoplasm. Nucleus. Nuclear in interphase, nuclear during mitosis.

---

## Images

---



12.5% SDS-PAGE Stained with Coomassie Blue showing ab114547

SDS-PAGE - Recombinant Human PPP2R5D protein (ab114547)

**Please note:** All products are "FOR RESEARCH USE ONLY. NOT FOR USE IN DIAGNOSTIC PROCEDURES"

## **Our Abpromise to you: Quality guaranteed and expert technical support**

---

- Replacement or refund for products not performing as stated on the datasheet
- Valid for 12 months from date of delivery
- Response to your inquiry within 24 hours
  
- We provide support in Chinese, English, French, German, Japanese and Spanish
- Extensive multi-media technical resources to help you
- We investigate all quality concerns to ensure our products perform to the highest standards

If the product does not perform as described on this datasheet, we will offer a refund or replacement. For full details of the Abpromise, please visit <https://www.abcam.com/abpromise> or contact our technical team.

## **Terms and conditions**

---

- Guarantee only valid for products bought direct from Abcam or one of our authorized distributors