

## Product datasheet

# Recombinant Human PRAK/MK5 protein ab217826

[1 Image](#)

### Description

---

<b>Product name</b>	Recombinant Human PRAK/MK5 protein
<b>Purity</b>	> 85 % Densitometry. Affinity purified.
<b>Expression system</b>	Baculovirus infected Sf9 cells
<b>Accession</b>	<u><a href="#">Q8IW41</a></u>
<b>Protein length</b>	Full length protein
<b>Animal free</b>	No
<b>Nature</b>	Recombinant
<b>Species</b>	Human
<b>Sequence</b>	MSEESDMDKAIKETSILEEYSINWTQKLGAGISGPVRVCVK KSTQERFAL KILLDRPKARNEVRLHMMCATHPNIVQIIIEVFANSVQFPHE SSPRARLLI VMEMMEGGELFHRISQHRHFTEKQASQVTKQIALALRHCH LLNIAHRDLK PENLLFKDNSLDAPVKLCDFGFAKIDQGDLMTQPFTPYV APQVLEAQR HQKEKSGIIPSTPYTYNKSCDLWVSLGVIIWMLCGYPPFY SKHHSRTI PKDMRRKIMTGSFEFPEEEWSQISEMAKDVVRKLLKVKP EERLTIEGVLD HPWLNSTEALDNVLPQAQLMMDKAVVAGIQQAHAEQLAN MRIQDLKVSLK PLHSVNNPILRKRKLLGTPKDSVYIHDHENGAEASNVAL EKLRDVIAQC ILPQAGKGENEDEKLNEVMQEAWKYNRECKLLRDTLQSF SWNGRGFTDKV DRLKLAIEVKQVIEEQTTSHESQ
<b>Predicted molecular weight</b>	79 kDa
<b>Amino acids</b>	1 to 473
<b>Tags</b>	GST tag N-Terminus
<b>Additional sequence information</b>	NM_003668.

### Specifications

## Specifications

---

Our **Abpromise guarantee** covers the use of **ab217826** in the following tested applications.

The application notes include recommended starting dilutions; optimal dilutions/concentrations should be determined by the end user.

<b>Applications</b>	Western blot SDS-PAGE
<b>Form</b>	Liquid
<b>Additional notes</b>	This product was previously labelled as PRAK

## Preparation and Storage

---

<b>Stability and Storage</b>	Shipped on Dry Ice. Upon delivery aliquot. Store at -80°C. Avoid freeze / thaw cycle. pH: 7.50 Constituents: 0.79% Tris HCl, 0.87% Sodium chloride, 0.31% Glutathione, 0.03% EDTA, 0.04% DTT, 0.002% PMSF, 25% Glycerol (glycerin, glycerine)
------------------------------	---

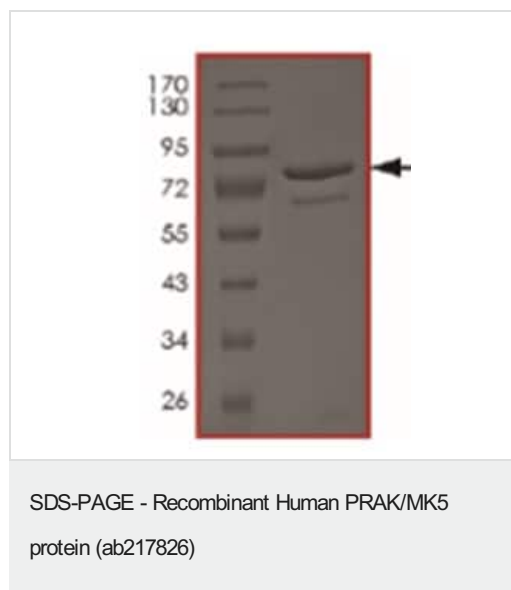
## General Info

---

<b>Function</b>	Mediates stress-induced small heat shock protein 27 phosphorylation.
<b>Tissue specificity</b>	Expressed ubiquitously.
<b>Sequence similarities</b>	Belongs to the protein kinase superfamily. CAMK Ser/Thr protein kinase family. Contains 1 protein kinase domain.
<b>Post-translational modifications</b>	Phosphorylated on Thr-182; which is the regulatory phosphorylation site and is located on the T-loop/loop 12.
<b>Cellular localization</b>	Cytoplasm. Nucleus. Also observed in the nucleus.

## Images

---



SDS-PAGE analysis of ab217826.

**Please note:** All products are "FOR RESEARCH USE ONLY. NOT FOR USE IN DIAGNOSTIC PROCEDURES"

### **Our Abpromise to you: Quality guaranteed and expert technical support**

---

- Replacement or refund for products not performing as stated on the datasheet
- Valid for 12 months from date of delivery
- Response to your inquiry within 24 hours
  
- We provide support in Chinese, English, French, German, Japanese and Spanish
- Extensive multi-media technical resources to help you
- We investigate all quality concerns to ensure our products perform to the highest standards

If the product does not perform as described on this datasheet, we will offer a refund or replacement. For full details of the Abpromise, please visit <https://www.abcam.com/abpromise> or contact our technical team.

### **Terms and conditions**

---

- Guarantee only valid for products bought direct from Abcam or one of our authorized distributors