

Product datasheet

Recombinant Human PRCP protein (His tag) ab198658

1 Image

Description

Product name Recombinant Human PRCP protein (His tag)

Purity = 50 % SDS-PAGE.

Expression system HEK 293 cells

Accession [P42785](#)

Protein length Full length protein

Animal free No

Nature Recombinant

Species Human

Sequence

```
SLHLPTNPTSLPAVAKNYSVLYFQQKVDHFGFNTVKTFNQ
RYLVADKYWK
KNGGSILFYTGNEGDIWFNNTGFMWDVAEELKAMLVFA
EHRYYGESLP
FGDNSFKDSRHLNFLTSEQALADFAELIKHLKRTIPGAENQ
PVAIGGSY
GGMLAAWFRMKYPHMVVGALAASAPIWQFEDLVPCGVF
MKIVTTDFRKSG
PHCSESIHRSWDAINRLSNTGSLQWLTGALHLCSPITSQ
DIQHLKDWIS
ETWVNLAMVDYPYASNFLQPLPAWPIKVVCQYLKPNPVS
DSLQQNIFQA
LNVYYNYSQVVKCLNISETATSSLGTLGWSYQACTEVVMP
FCTNGVDDMF
EPHSWNLKELSDDCFQQWGVRRPRPSWITMYGGKNISSH
TNMFVSNGLD
PWSGGGVTKDITDLVAVTISEGAHHLDLRRTKNALDPMSV
LLARSLEVRH MKNWIRDFYDSAGKQH
```

Predicted molecular weight 53 kDa including tags

Amino acids 31 to 496

Tags His tag C-Terminus

Additional sequence information This product is for the mature full length protein from aa 31 to 496. The signal peptide is not included. GenBank Accession #NM_005040.

Specifications

Our **Abpromise guarantee** covers the use of **ab198658** in the following tested applications.

The application notes include recommended starting dilutions; optimal dilutions/concentrations should be determined by the end user.

Applications	SDS-PAGE
Form	Liquid

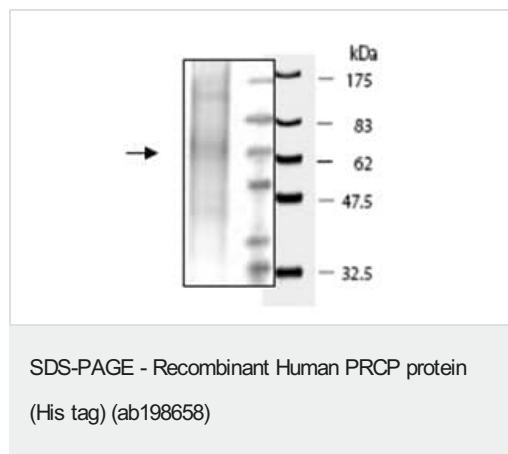
Preparation and Storage

Stability and Storage	Shipped on Dry Ice. Store at -80°C. Avoid freeze / thaw cycle. pH: 8.00 Preservative: 1.36% Imidazole Constituents: 0.48% Tris, 0.64% Sodium chloride, 0.02% Potassium chloride, 20% Glycerol (glycerin, glycerine), 0.05% (R*,R*)-1,4-Dimercaptobutan-2,3-diol
------------------------------	--

General Info

Function	Cleaves C-terminal amino acids linked to proline in peptides such as angiotensin II, III and des-Arg9-bradykinin. This cleavage occurs at acidic pH, but enzymatic activity is retained with some substrates at neutral pH.
Tissue specificity	Highest levels in placenta, lung and liver. Also present in heart, brain, pancreas and kidney.
Sequence similarities	Belongs to the peptidase S28 family.
Cellular localization	Lysosome.

Images



10% SDS-Page analysis of ab198658 (1 µg)

Please note: All products are "FOR RESEARCH USE ONLY. NOT FOR USE IN DIAGNOSTIC PROCEDURES"

Our Abpromise to you: Quality guaranteed and expert technical support

- Replacement or refund for products not performing as stated on the datasheet
- Valid for 12 months from date of delivery

- Response to your inquiry within 24 hours
- We provide support in Chinese, English, French, German, Japanese and Spanish
- Extensive multi-media technical resources to help you
- We investigate all quality concerns to ensure our products perform to the highest standards

If the product does not perform as described on this datasheet, we will offer a refund or replacement. For full details of the Abpromise, please visit <https://www.abcam.com/abpromise> or contact our technical team.

Terms and conditions

- Guarantee only valid for products bought direct from Abcam or one of our authorized distributors