

## Product datasheet

# Recombinant Human Prostaglandin F2 alpha Receptor/PTGFR protein ab159276

1 Image

### Description

<b>Product name</b>	Recombinant Human Prostaglandin F2 alpha Receptor/PTGFR protein	
<b>Expression system</b>	Wheat germ	
<b>Protein length</b>	Full length protein	
<b>Animal free</b>	No	
<b>Nature</b>	Recombinant	
<b>Species</b>	Human	
<b>Sequence</b>	MSMNNSKQLVSPAAALLSNTTCQTENRLSVFFSVIFMTVG ILSNSLAIAI LMKAYQRFQKSKASFLLLASGLVITDFFGHILINGAIAVFVY ASDKEWIR FDQSNVLCISIFGICMVFSGLCPLLLGSVMAIERCIGVTKPIF HSTKITSK HVKMMLSGVCLFAVFIALLPILGHRDYKIQASRTWCFYNT DIKDWEDRF YLLFSFLGLLALGVSLLCNAITGITLLRVKFKSQQHRQGRS HHLEMVIQ LLAIMCVSCICWSPFLVTMANINGINGNHSLETCTTLFALRM ATWNQILD PWVYILLRKAVLKNLYKLASQCCGVHVISLHWELSSIKNSL KVAAISES PVAEKSAST	
<b>Amino acids</b>	1 to 359	
<b>Tags</b>	GST tag N-Terminus	

### Specifications

Our **Abpromise guarantee** covers the use of **ab159276** in the following tested applications.

The application notes include recommended starting dilutions; optimal dilutions/concentrations should be determined by the end user.

<b>Applications</b>	ELISA
	Western blot
<b>Form</b>	Liquid

## Additional notes

This product was previously labelled as Prostaglandin F2 alpha Receptor.

## Preparation and Storage

---

### Stability and Storage

Shipped on dry ice. Upon delivery aliquot and store at -80°C. Avoid freeze / thaw cycles.

pH: 8.00

Constituents: 0.31% Glutathione, 0.79% Tris HCl

## General Info

---

### Function

Receptor for prostaglandin F2-alpha (PGF2-alpha). The activity of this receptor is mediated by G proteins which activate a phosphatidylinositol-calcium second messenger system. Initiates luteolysis in the corpus luteum.

### Sequence similarities

Belongs to the G-protein coupled receptor 1 family.

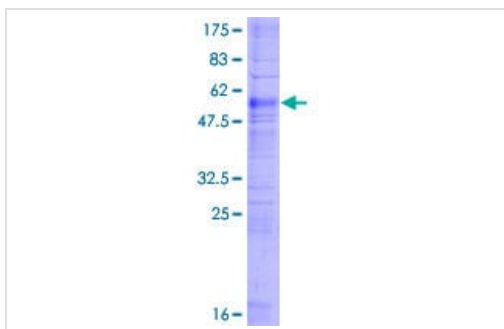
### Cellular localization

Cell membrane.

---

## Images

---



ab159276 on a 12.5% SDS-PAGE stained with Coomassie Blue.

SDS-PAGE - Recombinant Human Prostaglandin F2  
alpha Receptor/PTGFR protein (ab159276)

**Please note:** All products are "FOR RESEARCH USE ONLY. NOT FOR USE IN DIAGNOSTIC PROCEDURES"

## Our Abpromise to you: Quality guaranteed and expert technical support

---

- Replacement or refund for products not performing as stated on the datasheet
- Valid for 12 months from date of delivery
- Response to your inquiry within 24 hours
- We provide support in Chinese, English, French, German, Japanese and Spanish
- Extensive multi-media technical resources to help you
- We investigate all quality concerns to ensure our products perform to the highest standards

If the product does not perform as described on this datasheet, we will offer a refund or replacement. For full details of the Abpromise,

please visit <https://www.abcam.com/abpromise> or contact our technical team.

## **Terms and conditions**

---

- Guarantee only valid for products bought direct from Abcam or one of our authorized distributors