

## Product datasheet

# Recombinant Human Proteasome 20S C2/HC2 protein ab116156

[1 Image](#)

### Description

<b>Product name</b>	Recombinant Human Proteasome 20S C2/HC2 protein
<b>Purity</b>	> 95 % SDS-PAGE. ab116156 is purified using conventional chromatography techniques.
<b>Expression system</b>	Escherichia coli
<b>Accession</b>	<b><u>P25786</u></b>
<b>Protein length</b>	Full length protein
<b>Animal free</b>	No
<b>Nature</b>	Recombinant
<b>Species</b>	Human
<b>Sequence</b>	MGSSHHHHHH SSGLVPRGSH MGSMFRNQYD NDVTWVSPQG RIHQIEYAME AVKQGSATVG LKSKTHAVLV ALKRAQSELA AHQKKILHVD NHIGISIAGL TADARLLCNF MRQECLDSRF VFDRPLPVS LVSLIGSKTQ IPTQRYGRRP YGVGLLIAGYDDMGP HIFQT CPSANYFDCR AMSIGARSQS ARTYLERHMS EFMECNLNEL VKHGLRALRE TLP AEQDLTT KNV SIGIVGK DLEFTYDDD DVSPFLEGLE ERPQRKAQPA QPADEPAEKA DEPM EH
<b>Predicted molecular weight</b>	32 kDa including tags
<b>Amino acids</b>	1 to 263
<b>Tags</b>	His tag N-Terminus

### Specifications

Our **Abpromise guarantee** covers the use of **ab116156** in the following tested applications.

The application notes include recommended starting dilutions; optimal dilutions/concentrations should be determined by the end user.

<b>Applications</b>	Mass Spectrometry SDS-PAGE
<b>Mass spectrometry</b>	MALDI-TOF
<b>Form</b>	Liquid

## Additional notes

This product was previously labelled as Proteasome 20S C2

## Preparation and Storage

### Stability and Storage

Shipped at 4°C. Store at +4°C short term (1-2 weeks). Upon delivery aliquot. Store at -20°C or -80°C. Avoid freeze / thaw cycle.

pH: 8.00

Constituents: 0.03% DTT, 0.32% Tris HCl, 10% Glycerol (glycerin, glycerine), 0.88% Sodium chloride

## General Info

### Function

The proteasome is a multicatalytic proteinase complex which is characterized by its ability to cleave peptides with Arg, Phe, Tyr, Leu, and Glu adjacent to the leaving group at neutral or slightly basic pH. The proteasome has an ATP-dependent proteolytic activity. Mediates the lipopolysaccharide-induced signal transduction in the macrophage proteasome (By similarity). Might be involved in the anti-inflammatory response of macrophages during the interaction with *C.albicans* heat-inactivated cells.

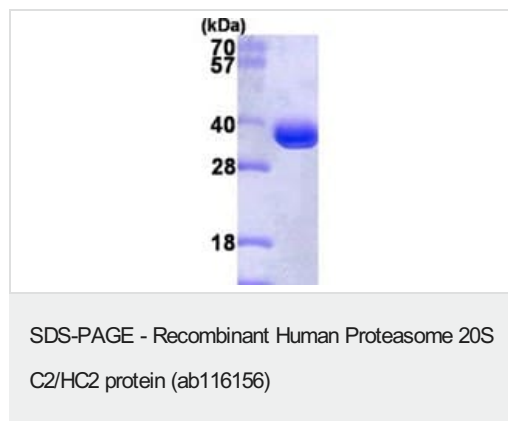
### Sequence similarities

Belongs to the peptidase T1A family.

### Cellular localization

Cytoplasm. Nucleus.

## Images



15% SDS-PAGE showing ab116156 at approximately 32 kDa (3µg).

**Please note:** All products are "FOR RESEARCH USE ONLY. NOT FOR USE IN DIAGNOSTIC PROCEDURES"

## Our Abpromise to you: Quality guaranteed and expert technical support

- Replacement or refund for products not performing as stated on the datasheet
- Valid for 12 months from date of delivery
- Response to your inquiry within 24 hours
- We provide support in Chinese, English, French, German, Japanese and Spanish

- Extensive multi-media technical resources to help you
- We investigate all quality concerns to ensure our products perform to the highest standards

If the product does not perform as described on this datasheet, we will offer a refund or replacement. For full details of the Abpromise, please visit <https://www.abcam.com/abpromise> or contact our technical team.

#### **Terms and conditions**

---

- Guarantee only valid for products bought direct from Abcam or one of our authorized distributors