

Product datasheet

Recombinant Human Proteasome subunit beta type 2/PSMB2 protein ab116169

[1 Image](#)

Description

Product name	Recombinant Human Proteasome subunit beta type 2/PSMB2 protein
Purity	> 90 % SDS-PAGE. ab116169 is purified using conventional chromatography techniques.
Expression system	Escherichia coli
Accession	<u>P49721</u>
Protein length	Full length protein
Animal free	No
Nature	Recombinant
Species	Human
Sequence	MGSSHHHHHHSSGLVPRGSHMEYLIGQGPDYVLVASDR VAASNIVQMKD DHDKMFKMSEKILLLCVGEAGDTVQFAEYIQKNVQLYKMR NGYELSPTAA ANFTRRNLDCLRSRTPYHVNLLLAGYDEHEGPALYYMDY LAALAKAPFAAHGYGAFLTLSILDYRPTISRERAVELLRK CLEELQKR FILNLPTFSVRIIDKNGIHDLDNISFPKQGS
Predicted molecular weight	25 kDa including tags
Amino acids	1 to 201
Tags	His tag N-Terminus

Specifications

Our **Abpromise guarantee** covers the use of **ab116169** in the following tested applications.

The application notes include recommended starting dilutions; optimal dilutions/concentrations should be determined by the end user.

Applications	Mass Spectrometry SDS-PAGE
Mass spectrometry	MALDI-TOF
Form	Liquid
Additional notes	This product was previously labelled as PSMB2, Proteasome subunit beta type 2

Preparation and Storage

Stability and Storage

Shipped at 4°C. Store at +4°C short term (1-2 weeks). Upon delivery aliquot. Store at -20°C or -80°C. Avoid freeze / thaw cycle.

pH: 8.00

Constituents: 0.02% DTT, 0.32% Tris HCl, 30% Glycerol (glycerin, glycerine), 0.58% Sodium chloride

General Info

Function

The proteasome is a multicatalytic proteinase complex which is characterized by its ability to cleave peptides with Arg, Phe, Tyr, Leu, and Glu adjacent to the leaving group at neutral or slightly basic pH. The proteasome has an ATP-dependent proteolytic activity. This subunit has a trypsin-like activity.

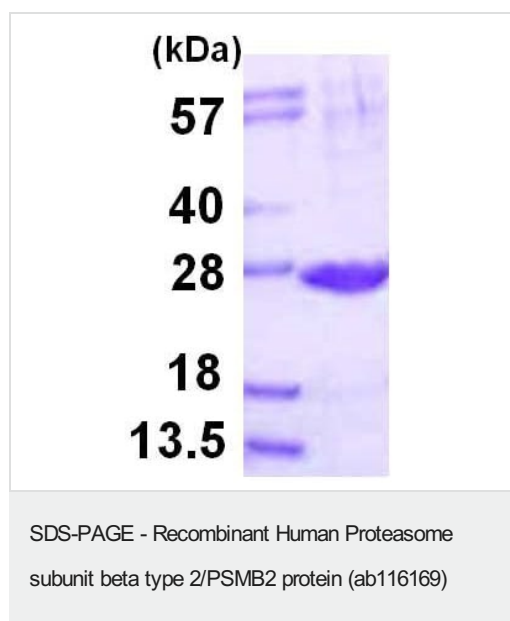
Sequence similarities

Belongs to the peptidase T1B family.

Cellular localization

Cytoplasm. Nucleus.

Images



15% SDS-PAGE showing ab116169 at approximately 24.9 kDa (3µg).

Please note: All products are "FOR RESEARCH USE ONLY. NOT FOR USE IN DIAGNOSTIC PROCEDURES"

Our Abpromise to you: Quality guaranteed and expert technical support

- Replacement or refund for products not performing as stated on the datasheet
- Valid for 12 months from date of delivery
- Response to your inquiry within 24 hours

- We provide support in Chinese, English, French, German, Japanese and Spanish
- Extensive multi-media technical resources to help you
- We investigate all quality concerns to ensure our products perform to the highest standards

If the product does not perform as described on this datasheet, we will offer a refund or replacement. For full details of the Abpromise, please visit <https://www.abcam.com/abpromise> or contact our technical team.

Terms and conditions

- Guarantee only valid for products bought direct from Abcam or one of our authorized distributors