

Recombinant Human PRUNE protein ab153466

1 Image

Description	
Product name	Recombinant Human PRUNE protein
Expression system	Wheat germ
Protein length	Full length protein
Animal free	No
Nature	Recombinant
Species	Human
Sequence	MEDYLQGCRAALQESRPLHVVLGNEACDLDSTVSALALA FYLAKTTEAEE VFVPVLNKRSELPLRGDMVFFLQKVHIPESILIFRDEIDLHAL YQAGQL TLILVDHHILSKSDTALEEAAVEVLDHRPIEPKHCPPCHVS VELVGSCAT LVTERILQGAPEILDRQTAALLHGTIILDCVNMDLKIGKATPK DSKYVEK LEALFPDLPKRNDIFDSLQKAKFDVSGLTTEQMLRKDQKTI YRQGVKVAI SAIYMDLEAFLQRSNLLADLHAFCAHSDVVLVAMTIFNT HNEPVRQLA IFCPHVALQTICEVLERSHSPPLKLTPASSTHPNLHAYLQ GNTQVSRKK LLPLLQEALSAYFDSMKIPSGQPETADVSREQVDKELDRA SNSLISGLSQ DEEDPPLPPTPMNSLVDECPLDQGLPKLSAEAVFEKCS QISLSQSTTASL SKK
Amino acids	1 to 453
Tags	GST tag N-Terminus

Specifications	
Our Abpromise guarantee covers the use of ab153466 in the following tested applications.	
The application notes include recommended starting dilutions; optimal dilutions/concentrations should be determined by the end user.	
Applications	Western blot ELISA

Form Liquid

Additional notes

Preparation and Storage

Stability and Storage Shipped on dry ice. Upon delivery aliquot and store at -80°C. Avoid freeze / thaw cycles.
pH: 8.00
Constituents: 0.31% Glutathione, 0.79% Tris HCl

General Info

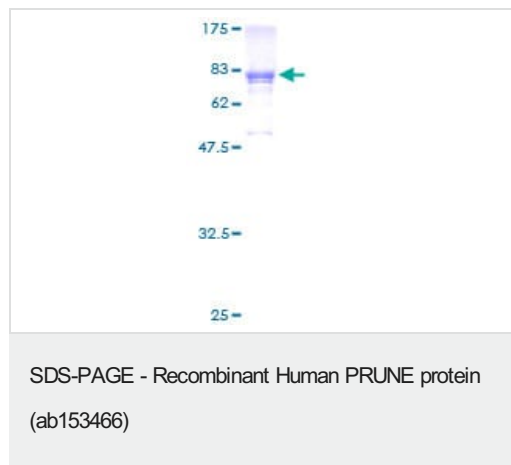
Function Phosphodiesterase (PDE) that has higher activity toward cAMP than cGMP, as substrate. Plays a role in cell proliferation, is able to induce cell motility and acts as a negative regulator of NME1.

Tissue specificity Ubiquitously expressed. Seems to be overexpressed in aggressive sarcoma subtypes, such as leiomyosarcomas and malignant fibrous histiocytomas (MFH) as well as in the less malignant liposarcomas.

Sequence similarities Belongs to the PPase class C family. Prune subfamily.

Cellular localization Cytoplasm. Nucleus. Cell junction > focal adhesion. In some transfected cells a nuclear staining is also observed.

Images



ab153466 on a 12.5% SDS-PAGE stained with Coomassie Blue.

Please note: All products are "FOR RESEARCH USE ONLY. NOT FOR USE IN DIAGNOSTIC PROCEDURES"

Our Abpromise to you: Quality guaranteed and expert technical support

- Replacement or refund for products not performing as stated on the datasheet
- Valid for 12 months from date of delivery
- Response to your inquiry within 24 hours

- We provide support in Chinese, English, French, German, Japanese and Spanish
- Extensive multi-media technical resources to help you
- We investigate all quality concerns to ensure our products perform to the highest standards

If the product does not perform as described on this datasheet, we will offer a refund or replacement. For full details of the Abpromise, please visit <https://www.abcam.com/abpromise> or contact our technical team.

Terms and conditions

- Guarantee only valid for products bought direct from Abcam or one of our authorized distributors