

Product datasheet

Recombinant Human PSG5 protein (denatured)  
ab167890

1 Image

| Description                |   |
|----------------------------|---|
| Product name               | Recombinant Human PSG5 protein (denatured)  |
| Purity                     | > 80 % SDS-PAGE.  |
| Expression system          | Escherichia coli  |
| Accession                  | <u>Q15238</u>   |
| Protein length             | Full length protein   |
| Animal free                | No  |
| Nature                     | Recombinant   |
| Species                    | Human   |
| Sequence                   | MGSSHHHHHH SSGLVPRGSH MGSQVTIEAL<br>PPKVSEGKDV LLLVHNL PQN LAGYWYKGQ LMDLYHYITS<br>YVVDGQINIY GPAYTGRET V YSNASLLIQN VTREDAGSYT<br>LHIIKRGDRT RGV TGYFTFN LYLKLPKPYI TINNSKP REN<br>KDVLAFTCEP KSENYTYWW LNGQSLPVSP RVKRPIENRI<br>LILPSVTRNE TGPYECEIRD RDGGM RSDPV<br>TLNVLYGPD LPSIYPSFTYY RSGENLYLSC FAESNPPAEY<br>FWTINGKFQQ SGQKLSIPQI TTKHRGLYTC SVRNSATGKE<br>SSKSMTVEVS APSGIGRLPL LNPI |
| Predicted molecular weight | 36 kDa including tags   |
| Amino acids                | 35 to 335   |
| Tags                       | His tag N-Terminus  |
| Description                | Recombinant Human PSG5 protein  |

| Specifications   |          |
|--|----------|
| Our <b>Abpromise guarantee</b> covers the use of <b>ab167890</b> in the following tested applications.                               |          |
| The application notes include recommended starting dilutions; optimal dilutions/concentrations should be determined by the end user. |          |
| Applications   | SDS-PAGE |
| Form   | Liquid   |

## Preparation and Storage

### Stability and Storage

Shipped at 4°C. Store at +4°C short term (1-2 weeks). Upon delivery aliquot. Store at -20°C or -80°C. Avoid freeze / thaw cycle.

pH: 8.00

Constituents: 6% Urea, 0.32% Tris HCl, 10% Glycerol (glycerin, glycerine)

## General Info

### Tissue specificity

Synthesized by syncytiotrophoblast of the placenta.

### Sequence similarities

Belongs to the immunoglobulin superfamily. CEA family.  
Contains 2 Ig-like C2-type (immunoglobulin-like) domains.  
Contains 1 Ig-like V-type (immunoglobulin-like) domain.

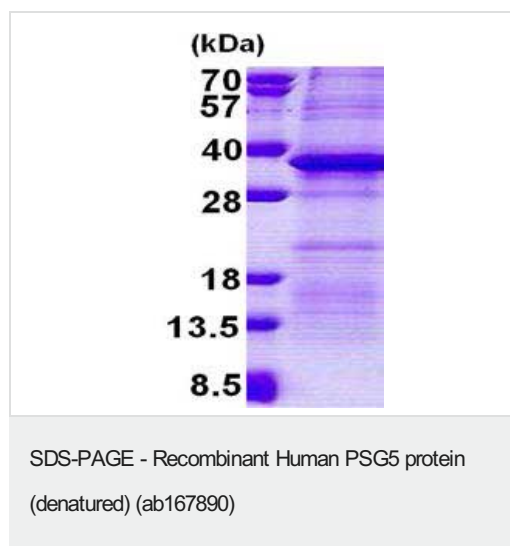
### Developmental stage

PSBG are produced in high quantity during pregnancy.

### Cellular localization

Secreted.

## Images



15% SDS-PAGE of ab167890 (3µg)

**Please note:** All products are "FOR RESEARCH USE ONLY. NOT FOR USE IN DIAGNOSTIC PROCEDURES"

## Our Abpromise to you: Quality guaranteed and expert technical support

- Replacement or refund for products not performing as stated on the datasheet
- Valid for 12 months from date of delivery
- Response to your inquiry within 24 hours
- We provide support in Chinese, English, French, German, Japanese and Spanish
- Extensive multi-media technical resources to help you
- We investigate all quality concerns to ensure our products perform to the highest standards

If the product does not perform as described on this datasheet, we will offer a refund or replacement. For full details of the Abpromise,

please visit <https://www.abcam.com/abpromise> or contact our technical team.

#### **Terms and conditions**

---

- Guarantee only valid for products bought direct from Abcam or one of our authorized distributors