

Product datasheet

Recombinant Human Psoriasin protein ab105577

[1 References](#) [2 Images](#)

Description

Product name	Recombinant Human Psoriasin protein
Purity	> 90 % SDS-PAGE. ab105577 was purified using conventional chromatography.
Expression system	Escherichia coli
Accession	<u>P31151</u>
Protein length	Full length protein
Animal free	No
Nature	Recombinant
Species	Human
Sequence	MGSSHHHHHHSSGLVPRGSHMSNTQAERSIIGMIDMFHK YTRDDKIDKP SLLTMMKENFPNFLSACDKKGTNYLADVFEKKDKNEDKKI DFSEFLSLLG DIATDYHKQSHGAAPCSGGSQ
Predicted molecular weight	14 kDa including tags
Amino acids	1 to 101
Tags	His tag N-Terminus

Specifications

Our **Abpromise guarantee** covers the use of **ab105577** in the following tested applications.

The application notes include recommended starting dilutions; optimal dilutions/concentrations should be determined by the end user.

Applications	Western blot SDS-PAGE Mass Spectrometry
Mass spectrometry	MALDI-TOF
Form	Liquid

Preparation and Storage

Stability and Storage Shipped at 4°C. Store at +4°C short term (1-2 weeks). Upon delivery aliquot. Store at -20°C or -

80°C. Avoid freeze / thaw cycle.

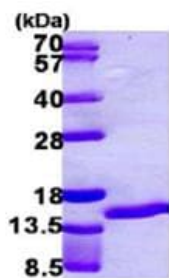
pH: 8.00

Constituents: 0.0154% DTT, 0.316% Tris HCl, 30% Glycerol (glycerin, glycerine), 0.58% Sodium chloride

General Info

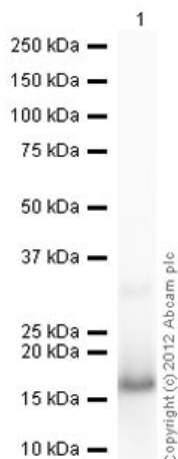
Tissue specificity	Fetal ear, skin, and tongue and human cell lines. Highly up-regulated in psoriatic epidermis. Also highly expressed in the urine of bladder squamous cell carcinoma (SCC) bearing patients.
Sequence similarities	Belongs to the S-101 family. Contains 2 EF-hand domains.
Cellular localization	Cytoplasm. Secreted. Secreted by a non-classical secretory pathway.

Images



SDS-PAGE - Recombinant Human Psoriasin protein (ab105577)

15% SDS-PAGE analysis of ab105577 (3ug)



Western blot - Recombinant Human Psoriasin protein (ab105577)

Anti-Psoriasin antibody ([ab83534](#)) at 1 µg/ml + Recombinant Human Psoriasin protein (ab105577) at 0.01 µg

Secondary

Goat Anti-Rabbit IgG H&L (HRP) preadsorbed ([ab97080](#)) at 1/5000 dilution

Developed using the ECL technique.

Performed under reducing conditions.

Exposure time: 1 minute

Please note: All products are "FOR RESEARCH USE ONLY. NOT FOR USE IN DIAGNOSTIC PROCEDURES"

Our Abpromise to you: Quality guaranteed and expert technical support

- Replacement or refund for products not performing as stated on the datasheet
- Valid for 12 months from date of delivery
- Response to your inquiry within 24 hours

- We provide support in Chinese, English, French, German, Japanese and Spanish
- Extensive multi-media technical resources to help you
- We investigate all quality concerns to ensure our products perform to the highest standards

If the product does not perform as described on this datasheet, we will offer a refund or replacement. For full details of the Abpromise, please visit <https://www.abcam.com/abpromise> or contact our technical team.

Terms and conditions

- Guarantee only valid for products bought direct from Abcam or one of our authorized distributors