

Product datasheet

Recombinant Human PU.1/Spi1 protein (His tag)
ab236335

3 Images

Description

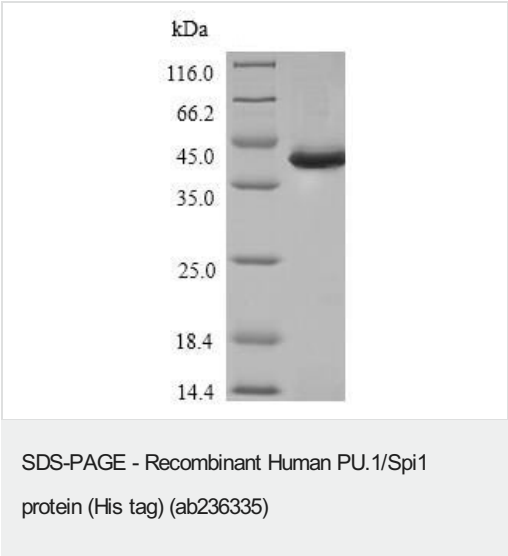
Product name	Recombinant Human PU.1/Spi1 protein (His tag)		
Purity	> 85 % SDS-PAGE.		
Expression system	Escherichia coli		
Accession	<u>P17947</u>		
Protein length	Full length protein		
Animal free	No		
Nature	Recombinant		
Species	Human		
Sequence	MLQACKMEGFPLVPPPSSEDLVPYDTDLYQRQTHEYYPYL SSDGESHSDHY WDFHPHHVHSEFESFAENNFTELQSVQPPQLQQLYRHM ELEQMHVLDTPM VPPHPSLGHQVSYLPRMCLQYPSLSPAQPSSDEEEGER QSPPLEVSDGEA DGLEPGPGLLPGETGSKKKIRLYQFLDLLRSGDMKDSW WVDKDKGTFQ FSSKHKEALHRWGIQKGNRKKMTYQKMARALRNYGKTG EVKKVKKKLTYSQSGEVLGRGGLAERRHPPH		
Predicted molecular weight	35 kDa including tags		
Amino acids	1 to 270		
Tags	His tag N-Terminus		

Specifications

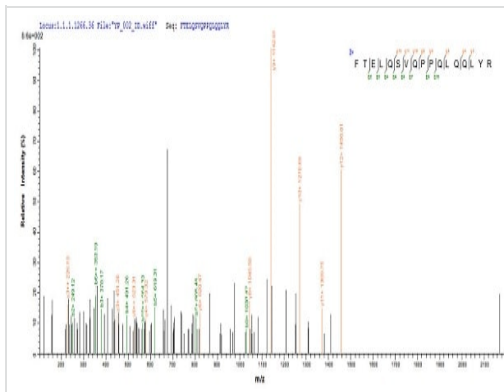
Our Abpromise guarantee covers the use of ab236335 in the following tested applications.	
The application notes include recommended starting dilutions; optimal dilutions/concentrations should be determined by the end user.	
Applications	Mass Spectrometry SDS-PAGE
Mass spectrometry	LC-MS/MS

Form	Liquid
Preparation and Storage	
Stability and Storage	<p>Shipped at 4°C. Store at -20°C or -80°C. Avoid freeze / thaw cycle.</p> <p>pH: 7.2</p> <p>Constituents: Tris buffer, 50% Glycerol (glycerin, glycerine)</p>
General Info	
Function	Binds to the PU-box, a purine-rich DNA sequence (5'-GAGGAA-3') that can act as a lymphoid-specific enhancer. This protein is a transcriptional activator that may be specifically involved in the differentiation or activation of macrophages or B-cells. Also binds RNA and may modulate pre-mRNA splicing.
Sequence similarities	<p>Belongs to the ETS family.</p> <p>Contains 1 ETS DNA-binding domain.</p>
Cellular localization	Nucleus.

Images

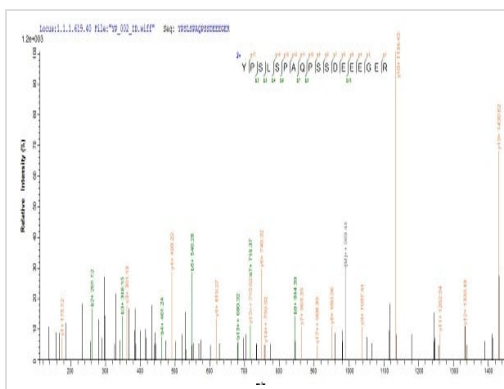


(Tris-Glycine gel) Discontinuous SDS-PAGE (reduced) ananlysis with 5% enrichment gel and 15% separation gel of ab236335.



Mass Spectrometry - Recombinant Human
PU.1/Spi1 protein (His tag) (ab236335)

Based on the SEQUEST from database of E.coli host and target protein, the LC-MS/MS Analysis result of ab236335 could indicate that this peptide derived from E.coli-expressed Homo sapiens (Human) PU.1/Spi1.



Mass Spectrometry - Recombinant Human
PU.1/Spi1 protein (His tag) (ab236335)

Based on the SEQUEST from database of E.coli host and target protein, the LC-MS/MS Analysis result of ab236335 could indicate that this peptide derived from E.coli-expressed Homo sapiens (Human) PU.1/Spi1.

Please note: All products are "FOR RESEARCH USE ONLY. NOT FOR USE IN DIAGNOSTIC PROCEDURES"

Our Abpromise to you: Quality guaranteed and expert technical support

- Replacement or refund for products not performing as stated on the datasheet
- Valid for 12 months from date of delivery
- Response to your inquiry within 24 hours
- We provide support in Chinese, English, French, German, Japanese and Spanish
- Extensive multi-media technical resources to help you
- We investigate all quality concerns to ensure our products perform to the highest standards

If the product does not perform as described on this datasheet, we will offer a refund or replacement. For full details of the Abpromise, please visit <https://www.abcam.com/abpromise> or contact our technical team.

Terms and conditions

- Guarantee only valid for products bought direct from Abcam or one of our authorized distributors