

Recombinant Human PYCR2 protein ab162262

★★★★★ [1 Abreviews](#) [1 Image](#)

Description

Product name	Recombinant Human PYCR2 protein
Expression system	Wheat germ
Protein length	Full length protein
Animal free	No
Nature	Recombinant
Species	Human
Sequence	MSVGFIGAGQLAYALARGFTAAGILSAHKIIASSPEMNLPTV SALRKMGV NLTRSNKETVKHSDVLF LAVKPHIIPFILDEIGADVQARHIV SCAAGVT ISSVEKKLMAFQPAPKVIRCMTNTPVVVQEGATVYATGTH ALVEDGQLE QLMSSVGFCTEVEEDLIDAVTGLSGSGPAYAFMALDALA DGGVKMGLPRR LAIQLGAQALLGAAKMLLDSEQHPCQLKDNVCSPGGATIH ALHFLESGGF RSLINAVEASCIRTRELQSMADQEKISPAALKKTLLDRVK LESPTVSTL TPSSPGKLLTRSLALGGKKD
Amino acids	1 to 320
Tags	GST tag N-Terminus

Specifications

Our **Abpromise guarantee** covers the use of **ab162262** in the following tested applications.

The application notes include recommended starting dilutions; optimal dilutions/concentrations should be determined by the end user.

Applications	Western blot
	ELISA
Form	Liquid

Additional notes

Preparation and Storage

Stability and Storage

Shipped on dry ice. Upon delivery aliquot and store at -80°C. Avoid freeze / thaw cycles.

pH: 8.00

Constituents: 0.31% Glutathione, 0.79% Tris HCl

General Info

Function

Housekeeping enzyme that catalyzes the last step in proline biosynthesis. In some cell types, such as erythrocytes, its primary function may be the generation of NADP(+). Can utilize both NAD and NADP. Has higher affinity for NADP, but higher catalytic efficiency with NADH.

Tissue specificity

Detected in erythrocytes (at protein level).

Pathway

Amino-acid biosynthesis; L-proline biosynthesis; L-proline from L-glutamate 5-semialdehyde: step 1/1.

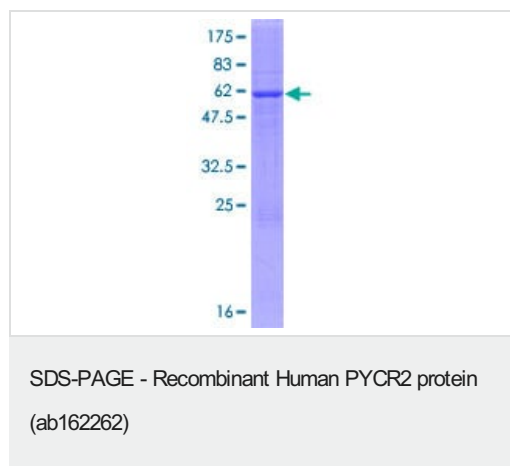
Sequence similarities

Belongs to the pyrroline-5-carboxylate reductase family.

Cellular localization

Cytoplasm.

Images



ab162262 on a 12.5% SDS-PAGE stained with Coomassie Blue.

Please note: All products are "FOR RESEARCH USE ONLY. NOT FOR USE IN DIAGNOSTIC PROCEDURES"

Our Abpromise to you: Quality guaranteed and expert technical support

- Replacement or refund for products not performing as stated on the datasheet
- Valid for 12 months from date of delivery
- Response to your inquiry within 24 hours
- We provide support in Chinese, English, French, German, Japanese and Spanish
- Extensive multi-media technical resources to help you
- We investigate all quality concerns to ensure our products perform to the highest standards

If the product does not perform as described on this datasheet, we will offer a refund or replacement. For full details of the Abpromise, please visit <https://www.abcam.com/abpromise> or contact our technical team.

Terms and conditions

- Guarantee only valid for products bought direct from Abcam or one of our authorized distributors