

Recombinant Human QTRTD1 protein ab187456

1 Image

Description

Product name	Recombinant Human QTRTD1 protein		
Purity	> 95 % SDS-PAGE. ab187456 was purified using conventional chromatography.		
Expression system	Escherichia coli		
Accession	<u>Q9H974</u>		
Protein length	Full length protein		
Animal free	No		
Nature	Recombinant		
Species	Human		
Sequence	MGSSHHHHHHSSGLVPRGSHMGSMKLSLTKVVNGCRLG KIKNLGKTGDHT MDIPGCLLYTKTGSAPHLTHHTLHNIHGVPAQAQLTLSSLA EHHEVLTEY KEGVGKFIGMPESLLYCSLHDPVSPCPAGYVTNKSVSVW SVAGRVEMTVS KFMAIQKALQPDWFQCLSDGEVSCKEATSIKRVKSVDR SLLFLDNCLRL QEESEVLQKSVIIGVIEGGDVMEERLRSARETAKRPVGGF LLDGFQGNPT TLEARLRLLSSVTAELPEDKPRLLSGVSRPDEVLECIERGV DLFESFFPY QVTERGCALTFSFDYQPNPEETLLQQNGTQEEIKCMDQIK KIETTGCNQE ITSFEINLKEKKYQEDFNPLVRGCSCYCKNHTRAYIHLLV TNELLAGV LLMMHNFEHYFGFFHYREALKSDKLAQLKELIHRQAS		
Predicted molecular weight	49 kDa including tags		
Amino acids	1 to 415		
Tags	His tag N-Terminus		

Specifications

Our **Abpromise guarantee** covers the use of **ab187456** in the following tested applications.

The application notes include recommended starting dilutions; optimal dilutions/concentrations should be determined by the end user.

<b>Applications</b>	SDS-PAGE
	Mass Spectrometry
<b>Mass spectrometry</b>	MALDI-TOF
<b>Form</b>	Liquid

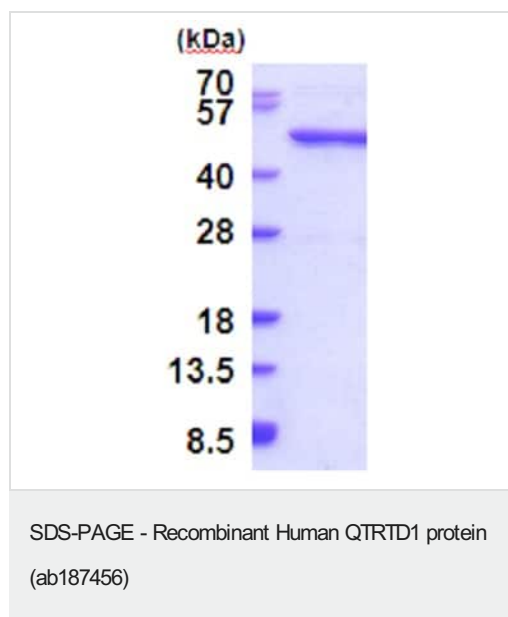
## Preparation and Storage

<b>Stability and Storage</b>	Shipped at 4°C. Store at +4°C short term (1-2 weeks). Upon delivery aliquot. Store at -20°C or -80°C. Avoid freeze / thaw cycle.
	pH: 7.40
	Constituents: 30% Glycerol (glycerin, glycerine), 0.03% DTT, 0.03% EDTA, 0.002% PMSF, 69% PBS

## General Info

<b>Function</b>	Interacts with QTRT1 to form an active queuine tRNA-ribosyltransferase. This enzyme exchanges queuine for the guanine at the wobble position of tRNAs with GU(N) anticodons (tRNA-Asp, -Asn, -His and -Tyr), thereby forming the hypermodified nucleoside queuosine (Q) (7-(((4,5-cis-dihydroxy-2-cyclopenten-1-yl)amino)methyl)-7-deazaguanosine).
<b>Pathway</b>	tRNA modification; tRNA-queuosine biosynthesis.
<b>Sequence similarities</b>	Belongs to the queuine tRNA-ribosyltransferase family. QTRTD1 subfamily.
<b>Cellular localization</b>	Cytoplasm. Mitochondrion. May associate with the mitochondrion outer membrane.

## Images



15% SDS-PAGE analysis of ab187456 (3 µg)

**Please note:** All products are "FOR RESEARCH USE ONLY. NOT FOR USE IN DIAGNOSTIC PROCEDURES"

### **Our Abpromise to you: Quality guaranteed and expert technical support**

---

- Replacement or refund for products not performing as stated on the datasheet
- Valid for 12 months from date of delivery
- Response to your inquiry within 24 hours
  
- We provide support in Chinese, English, French, German, Japanese and Spanish
- Extensive multi-media technical resources to help you
- We investigate all quality concerns to ensure our products perform to the highest standards

If the product does not perform as described on this datasheet, we will offer a refund or replacement. For full details of the Abpromise, please visit <https://www.abcam.com/abpromise> or contact our technical team.

### **Terms and conditions**

---

- Guarantee only valid for products bought direct from Abcam or one of our authorized distributors