

Product datasheet

Recombinant Human RAB35 protein ab113586

1 Image

Description

Product name	Recombinant Human RAB35 protein
Purity	> 90 % SDS-PAGE. ab113586 was purified using conventional chromatography.
Expression system	Escherichia coli
Accession	<u>Q15286</u>
Protein length	Full length protein
Animal free	No
Nature	Recombinant
Species	Human
Sequence	MGSSHHHHHSSGLVPRGSHMARDYDHLFKLLIIGDSGV GKSSLLLRFAD NTFSGSYITTIGVDFKIRTVEINGEKVKLQWDTAGQERFRTI TSTYYRG THGVIVYDV TSAESFVNVKRWLHEINQNCDDVCRILVGN KNDDPERKVV ETEDAYKFAGQMGIQLFETSAKENVNVEEMFNCITELVLR AKKDNLAKQQ QQQQNDVVKLTKNSKRKKRCC
Predicted molecular weight	25 kDa including tags
Amino acids	1 to 201
Tags	His tag N-Terminus

Specifications

Our **Abpromise guarantee** covers the use of **ab113586** in the following tested applications.

The application notes include recommended starting dilutions; optimal dilutions/concentrations should be determined by the end user.

Applications	Mass Spectrometry SDS-PAGE
Mass spectrometry	MALDI-TOF
Form	Liquid

Preparation and Storage

Stability and Storage

Shipped at 4°C. Store at +4°C short term (1-2 weeks). Upon delivery aliquot. Store at -20°C or -80°C. Avoid freeze / thaw cycle.

pH: 8.00

Constituents: 0.02% DTT, 0.32% Tris HCl, 40% Glycerol (glycerin, glycerine), 0.88% Sodium chloride

General Info

Function

In the process of endocytosis, essential rate-limiting regulator of a fast recycling pathway back to the plasma membrane. During cytokinesis, required for the postfurling terminal steps, namely for intercellular bridge stability and abscission, possibly by controlling phosphatidylinositol 4,5-bis phosphate (PIP2) and SEPT2 localization at the intercellular bridge.

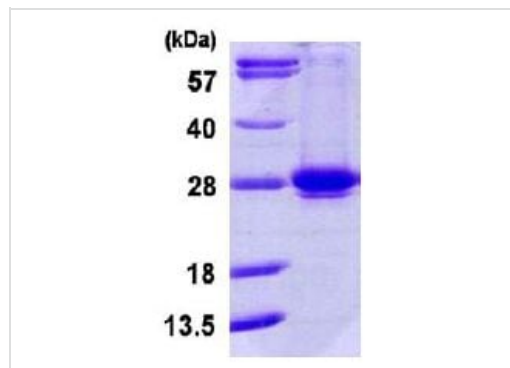
Sequence similarities

Belongs to the small GTPase superfamily. Rab family.

Cellular localization

Cell membrane. Membrane > clathrin-coated pit. Cytoplasmic vesicle > clathrin-coated vesicle. Endosome. Melanosome. Present on sorting endosomes and endosomal tubules. Tends to be enriched in PIP2-positive cell membrane domains. During mitosis, associated with the plasma membrane and present at the ingressing furrow during early cytokinesis as well as at the intercellular bridge later during cytokinesis. Identified by mass spectrometry in melanosome fractions from stage I to stage IV.

Images



15% SDS-PAGE analysis of 3 µg ab113586.

SDS-PAGE - Recombinant Human RAB35 protein
(ab113586)

Please note: All products are "FOR RESEARCH USE ONLY. NOT FOR USE IN DIAGNOSTIC PROCEDURES"

Our Abpromise to you: Quality guaranteed and expert technical support

- Replacement or refund for products not performing as stated on the datasheet
- Valid for 12 months from date of delivery
- Response to your inquiry within 24 hours
- We provide support in Chinese, English, French, German, Japanese and Spanish

- Extensive multi-media technical resources to help you
- We investigate all quality concerns to ensure our products perform to the highest standards

If the product does not perform as described on this datasheet, we will offer a refund or replacement. For full details of the Abpromise, please visit <https://www.abcam.com/abpromise> or contact our technical team.

Terms and conditions

- Guarantee only valid for products bought direct from Abcam or one of our authorized distributors