

Recombinant Human RACK1 protein ab119442

2 References 1 Image

Description	
Product name	Recombinant Human RACK1 protein
Purity	> 95 % SDS-PAGE. ab119442 was purified using conventional chromatography.
Expression system	Escherichia coli
Accession	<b><u>P63244</u></b>
Protein length	Full length protein
Animal free	No
Nature	Recombinant
Species	Human
Sequence	MGSSHHHHHH SSGLVPRGSH MTEQMTLRGT LKGHNGWVTQ IATTPQFPDM ILSASRDKTI IMWKLTRDET NYGIPQRALR GHSHFVSDVV ISSDGQFALS GSWDGTLRLW DLTTGTTTRR FVGHTKDVLS VAFSSDNRQI VSGSRDKTIK LWNTLGVCKY TVQDESHSEW VSCVRFSPNS SNPIIVSCGW DKLVKVVNLA NCKLKTNHIG HTGYLNTVTV SPDGSLCASG GKDGGQAMLWD LNEGKHLYTL DGGDIINALC FSPNRYWLCA ATGPSIKIWD LEGKIIVDEL KQEVISTSSK AEPPQCTSLA WSADGGQTLFA GYTDNLVRVW QVTIGTR
Predicted molecular weight	37 kDa including tags
Amino acids	1 to 317
Tags	His tag N-Terminus

Specifications	
Our <b>Abpromise guarantee</b> covers the use of <b>ab119442</b> in the following tested applications.	
The application notes include recommended starting dilutions; optimal dilutions/concentrations should be determined by the end user.	
Applications	SDS-PAGE Mass Spectrometry
Mass spectrometry	MALDI-TOF

**Form** Liquid

## Preparation and Storage

**Stability and Storage** Shipped at 4°C. Upon delivery aliquot and store at -20°C or -80°C. Avoid repeated freeze / thaw cycles.

pH: 8.00

Constituents: 0.08% DTT, 0.32% Tris HCl, 50% Glycerol (glycerin, glycerine), 1.17% Sodium chloride

## General Info

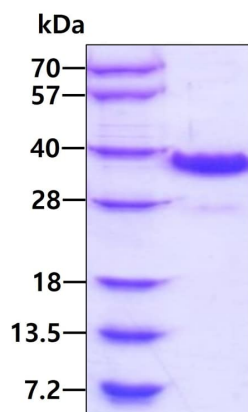
**Function** Seems to bind protein kinase C acting as an intracellular receptor to anchor the activated PKC to the cytoskeleton. May be involved in up-regulation of the activity of kinases such as PKC via binding to KRT1. Together with KRT1 and ITGB1, serves as a platform for SRC activation or inactivation. May play an important role in the developing brain and neuronal differentiation.

**Sequence similarities** Belongs to the WD repeat G protein beta family. Contains 7 WD repeats.

**Domain** The WD repeats domain 5 mediates interaction with TRIM63.

**Cellular localization** Cell membrane. Located on plasma membrane of neuroblastoma NMB7 cells.

## Images



3ug by SDS-PAGE under reducing conditions and visualized by coomassie blue stain.

SDS-PAGE - Recombinant Human RACK1 protein  
(ab119442)

**Please note:** All products are "FOR RESEARCH USE ONLY. NOT FOR USE IN DIAGNOSTIC PROCEDURES"

## Our Abpromise to you: Quality guaranteed and expert technical support

- Replacement or refund for products not performing as stated on the datasheet

- Valid for 12 months from date of delivery
- Response to your inquiry within 24 hours
- We provide support in Chinese, English, French, German, Japanese and Spanish
- Extensive multi-media technical resources to help you
- We investigate all quality concerns to ensure our products perform to the highest standards

If the product does not perform as described on this datasheet, we will offer a refund or replacement. For full details of the Abpromise, please visit <https://www.abcam.com/abpromise> or contact our technical team.

#### **Terms and conditions**

---

- Guarantee only valid for products bought direct from Abcam or one of our authorized distributors